

INDEX OF SHEETS

- SHEET NO. 1 TITLE PAGE
 2-3 TYPICAL CROSS-SECTIONS OF IMPROVEMENT (STANDARD CONCRETE PAVEMENT, ITEM 30-1)
 4 ITEM QUANTITY SHEET
 5 ITEM DRAINAGE SHEET
 6 ITEM DRAINAGE SHEET (NON-90V ITEMS)
 7-8 EARTHWORK SHEETS
 9-14 PLAN AND PROFILE SHEETS
 15 SUPERSTRUCTURE WIDENING, STA. 8430.0 TO 8440.0
 16 DETAILS OF SUPERSTRUCTURE, STA. 8430.0 TO 8440.0
 17 DETAILS OF WIDENING ABUT NO. 1, STA. 8430.0 TO 8440.0
 18 DETAILS OF WIDENING PIER NO. 1 AND 2, STA. 8430.0 TO 8440.0
 19 DETAILS OF WIDENING ABUT NO. 2, STA. 8430.0 TO 8440.0
 20 RAILING DETAILS
 21 REINFORCING STEEL SCHEDULE
 22 BRIDGE STANDARD SHEET SB 20-56 DETAILS WF BEAM BRIDGES
 23 BRIDGE STANDARD SHEET SB 21-56 CONDUIT AND LIGHTING SYSTEMS
 24 BRIDGE STANDARD SHEET SB 56-2 BARRICADES SIGN AND LIGHTS (BRIDGES)
 24 ROADWAY STANDARD SHEET RS 56-1, BANKING TABLES
 25 ROADWAY STANDARD SHEET RS 56-2, DROP INLETS
 26 ROADWAY STANDARD SHEET RS 56-3, MARKERS
 27 ROADWAY STANDARD SHEET RS 56-4, DRAINAGE
 28 ROADWAY STANDARD SHEET RS 56-5, CURB AND SIDEWALK
 29 ROADWAY STANDARD SHEET RS 56-6, TYPICAL GRADING
 30 ROADWAY STANDARD SHEET RS 56-7, CONCRETE CATCH BASINS OR MANHOLES
 31 ROADWAY STANDARD SHEET RS 56-8, CONCRETE BLOCK CATCH BASINS OR MANHOLES
 32 ROADWAY STANDARD SHEET RS 56-9, THREE CABLE GUARD RAIL W/STEEL POSTS
 33 ROADWAY STANDARD SHEET RS 56-12, BARRICADES, SIGNS AND LIGHTS
 34-39 CROSS-SECTIONS
 60-61 CHANNEL SECTIONS

PROJECT NAME & NUMBER
 NORTHFIELD F 78 (02)

TYPE BITUMINOUS CONCRETE
PAVEMENT AREA 1415 56 103

RECORD PLANS

MATERIALS
 SUBBASE OF GRAVEL & SAND
 SMITH PIT NORTHFIELD, VT.
 MACADAM BASE COURSE
 WELLS-LAMSON WESTERVILLE, VT.
 WEE TAP & CUTBACK ASPHALT
 BARRETT CORP. MALDEN, MASS.
 BITUMINOUS CONCRETE
 WELLS-LAMSON WESTERVILLE, VT.
 PEASTONE FOR SEAL
 COLUMBIA BAG CO. DANFIELDT, VT.
 CONCRETE CLASS A, B & C
 LYD CONCRETES, MONTPELIER, VT.
 CENTRUM-STEEL STRUCTURAL STEEL
 ALUMINUM BRIDGE RAIL
 V.I. STRUCTURAL STEEL BURLINGTON, VT.
 R.C.P. V.I. CONCRETE PIPES, WINDSOR, VT.
 ACCUMPA'S ACCUM UNDERMIN
 NEWENGLAND METAL PIPE, MALDEN, MASS.
 CHARLES FOR GUARD RAIL
 METAL LINE W STEEL CO. BOSTON, MASS.
 GUARD RAIL PAINT
 C.F. BRADLEY CO. BATTLEBROOK, VT.

CONTRACTOR
 GEORGE & WEDENBURGH
 RESIDENT ENGR. W.A. HEALD
 INSPECTOR W. REIDMAN
 RECORD PLANS W.A. HEALD

CONTRACT DATED JULY 11, 1957
CONTRACT STARTED JULY 24, 1957
CONTRACT COMPLETED AUGUST 11, 1958
CONTRACT ACCEPTED AUGUST 4, 1958

STATE OF VERMONT
 DEPARTMENT OF HIGHWAYS

FEDERAL PROJECT

PROPOSED IMPROVEMENT

VILLAGE OF NORTHFIELD
 COUNTY OF WASHINGTON
 VERMONT ROUTE 12
 RANDOLPH-MONTPELIER ROAD

BEGINNING AT A POINT IN THE VILLAGE OF NORTHFIELD 2.095 MILES
 SOUTH OF THE BERLIN-NORTHFIELD TOWN LINE AND EXTENDING NORTHERLY
 0.366 MILES, INCLUDING BRIDGE.

LENGTH OF ROADWAY 1,923.0 FEET = 0.345 MILE
 LENGTH OF BRIDGE 111.0 FEET = 0.021 MILE
 LENGTH OF PROJECT 1,934.0 FEET = 0.366 MILE

SECTION INCLINATION	
VERT. (PERCENT)	2.00
VERT. (PERCENT)	3.00
HORIZ.	100
H.	100
V.	100



NOTE: ANY FURTHER INFORMATION CONCERNING FINAL QUANTITIES, REVISIONS OR OTHER DETAILS RELATIVE TO THIS PROJECT MAY BE FOUND IN EITHER THE FIELD BOOKS OR THE ESTIMATE FILE.

Northfield
 Project Number 6164
 F 78 (02)
 George & Wedenburgh
 1957

Northfield
 Project Number 6164
 F 78 (02)
 George & Wedenburgh
 1957

Northfield
 Project Number 6164
 F 78 (02)
 George & Wedenburgh
 1957

NORTHFIELD, VT. PROJ. 6164
 GEORGE & WEDENBURGH
 ENGINEERS
 1957

SCALE

SCALE	PLAN	PROFILE	CROSS-SECTION
1" = 100'	1" = 20'	1" = 10'	1" = 5'

CURVE DATA

DEFLECTION OF ANGLE	DEGREE OF CURVE	RADIUS OF CURVE	TANGENT DISTANCE	LENGTH OF CURVE	EXTERNAL DISTANCE
D	D	R	T	L	E

POINT OF INTERSECTION P.I.
POINT OF CURVE P.C.
POINT OF TANGENT P.T.
POINT ON TANGENT P.O.T.
POINT ON SUB-TANGENT P.O.S.T.

THESE PLANS ARE SUBJECT TO SUCH REVISIONS AS MAY BE REQUIRED BY THE BUREAU OF PUBLIC ROADS OR THE DOWNSHOWER OF HIGHWAYS.

CONSTRUCTION IS TO BE CARRIED ON IN ACCORDANCE WITH THE PLANS AND THE STANDARD SPECIFICATIONS FOR HIGHWAY AND BRIDGE CONSTRUCTION OF JANUARY 1956, SUBMITTED TO THE BUREAU OF PUBLIC ROADS AS APPROVED BY JULY 5, 1956 INCLUDING ALL SUBSEQUENT APPROVED REVISIONS AND SUCH REVISED SPECIFICATIONS AND SPECIAL PROVISIONS AS ARE SUBMITTED WITH THE PLANS.

DEPARTMENT OF PUBLIC ROADS
 BUREAU OF PUBLIC ROADS

APPROVED

DIVISION	ENGINEER	DATE

PROJECT F NO. 78 (12)
 SHEET 1 OF 61 SHEETS

APPROVED: *W. H. August* DATE: 5-10-57
 APPROVED: *R. F. Taylor* DATE: Apr. 2, 1957
 APPROVED: *W. H. August* DATE: 5/10/57
 APPROVED: *W. H. August* DATE: 5/10/57

TYPICAL SECTIONS

- 3" BITUMINOUS CONCRETE PAVEMENT, ITEM 351-B
- 4" MACADAM BASE COURSE, ITEM 210
- SUB-BASE OF GRAVEL, ITEM 201-A
- 6" SUB-BASE OF SAND, ITEM 202

FOR ROUNDING OF SLOPE SEE ROADWAY STANDARD SHEET 76 54-4

THE COMMERCIAL FERTILIZER SHALL BE USED AS FOLLOWS:

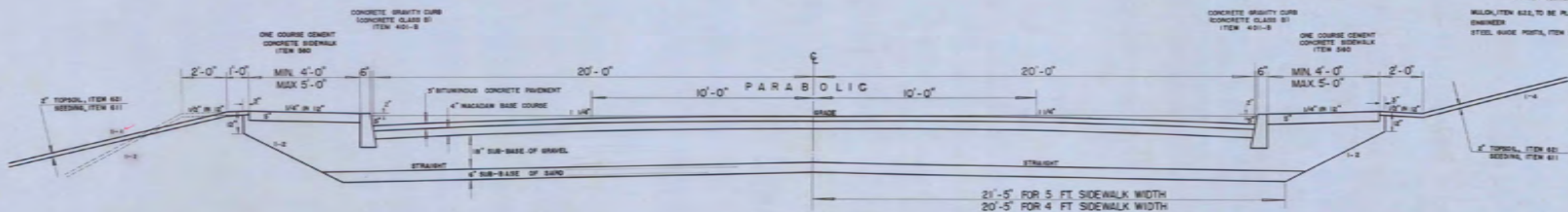
NITROGEN FROM 4% TO 6%	RATE OF APPLICATION 1000 LBS PER ACRE
PHOSPHORUS FROM 4% TO 10%	RATE OF APPLICATION 1000 LBS PER ACRE
POTASH FROM 4% TO 8%	RATE OF APPLICATION 1000 LBS PER ACRE

ALL PHOSPHORIC ACID TO BE DERIVED FROM ROCK FERTILIZER SHALL BE DELIVERED IN BAGS OF NOT TO EXCEED 100 LBS. EA. THE SEED MIXTURE SHALL BE COMPOSED BY WEIGHT AS FOLLOWS:

KENTUCKY BLUE GRASS 65%	RATE OF BROADCAST 40%
ORCHARD GRASS 40%	RATE OF BROADCAST 10%
RED TOP 10%	RATE OF BROADCAST 200 LBS PER ACRE
RED CLOVER 10%	
WHITE CLOVER 5%	

MULCH, ITEM 622, TO BE PLACED ON ALL EARTH SLOPES OR DIRECTED BY THE ENGINEER

STEEL WEDGE POSTS, ITEM 348-B TO BE PLACED AS DIRECTED BY THE ENGINEER

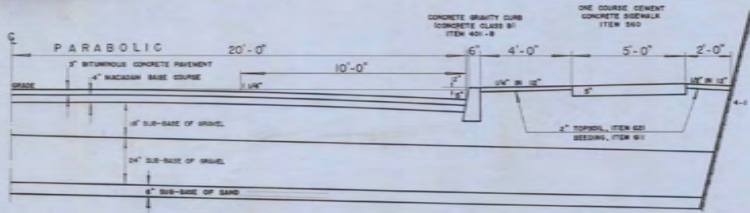


NORMAL SECTION

STA. 3481 - STA. 2048
 Except for Special Sections as indicated below.

SUB-BASE OF SAND USED AT
 STA. 1040-1240 & 22150-25150

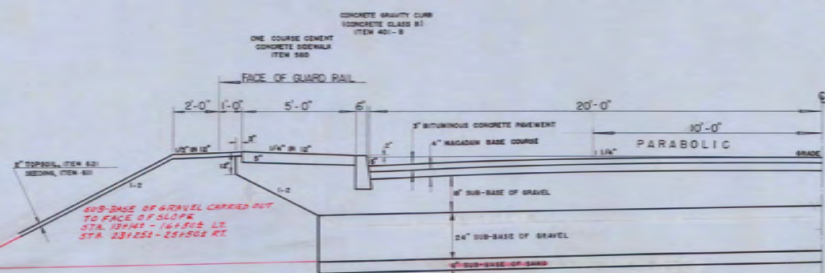
SUB-BASE OF GRAVEL
 3140-3400 24" NO SAND CUSHION
 3410-3700 18" NO SAND CUSHION
 3710-4000 18" NO SAND CUSHION
 4010-4400 AS DESIGNED NO SAND CUSHION
 4410-4700 18" NO SAND CUSHION
 4710-5000 24" NO SAND CUSHION
 5010-5300 AS DESIGNED 4" SAND CUSHION
 5310-5600 AS DESIGNED NO SAND CUSHION



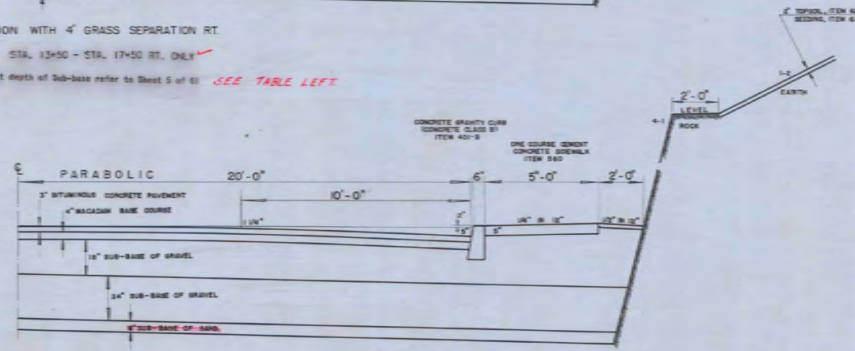
NORMAL SECTION WITH 4" GRASS SEPARATION RT.

STA. 1350 - STA. 1750 RT. ONLY

NOTE: For correct depth of Sub-base refer to Sheet 5 of 61 SEE TABLE LEFT



SECTION WITH GUARD RAIL POSITION
 STA. 1318 - STA. 1650 LT. ONLY



SLOPES IN SOLID ROCK EXCAVATION

STA. 1240 - STA. 1350 RT. ONLY 4" SIDEWALK
 STA. 2250 - STA. 2840 LT. ONLY 2" SIDEWALK

NORTHFIELD

Surveyed by
 Designed by L.C. JONES
 Drawn by A.A.A.
 Traced by A.A.A.
 Checked by
 Scale: F No. 78 (12) Plot
 Sheet 5 of 61 Sheets

NO.	LIST OF SHEETS (BRIDGE ONLY)
9	Plan
10	Profile
15	Superstructure Widening
16	Details of Superstructure
17	Details of Widening Abut #1
18	Doors #1 & 2
19	Abut #2
20	Rolling Details
21	Reinforcing Steel Details
22	Sign. Plans 1B, 20, 26
23	At. Plans 31, 36, 2
24	Channel Sections

5' ONE COURSE CEMENT CONCRETE SIDEWALK (5'0" wide)

LT.	RT.
6445-6455	6445-6455
6455-6465	6455-6465
6465-6475	6465-6475
6475-6485	6475-6485
6485-6495	6485-6495
6495-6505	6495-6505
6505-6515	6505-6515
6515-6525	6515-6525
6525-6535	6525-6535
6535-6545	6535-6545
6545-6555	6545-6555
6555-6565	6555-6565
6565-6575	6565-6575
6575-6585	6575-6585
6585-6595	6585-6595
6595-6605	6595-6605
6605-6615	6605-6615
6615-6625	6615-6625
6625-6635	6625-6635
6635-6645	6635-6645
6645-6655	6645-6655
6655-6665	6655-6665
6665-6675	6665-6675
6675-6685	6675-6685
6685-6695	6685-6695
6695-6705	6695-6705
6705-6715	6705-6715
6715-6725	6715-6725
6725-6735	6725-6735
6735-6745	6735-6745
6745-6755	6745-6755
6755-6765	6755-6765
6765-6775	6765-6775
6775-6785	6775-6785
6785-6795	6785-6795
6795-6805	6795-6805
6805-6815	6805-6815
6815-6825	6815-6825
6825-6835	6825-6835
6835-6845	6835-6845
6845-6855	6845-6855
6855-6865	6855-6865
6865-6875	6865-6875
6875-6885	6875-6885
6885-6895	6885-6895
6895-6905	6895-6905
6905-6915	6905-6915
6915-6925	6915-6925
6925-6935	6925-6935
6935-6945	6935-6945
6945-6955	6945-6955
6955-6965	6955-6965
6965-6975	6965-6975
6975-6985	6975-6985
6985-6995	6985-6995
6995-7005	6995-7005

CONCRETE CURB, 4'-0" HIGH

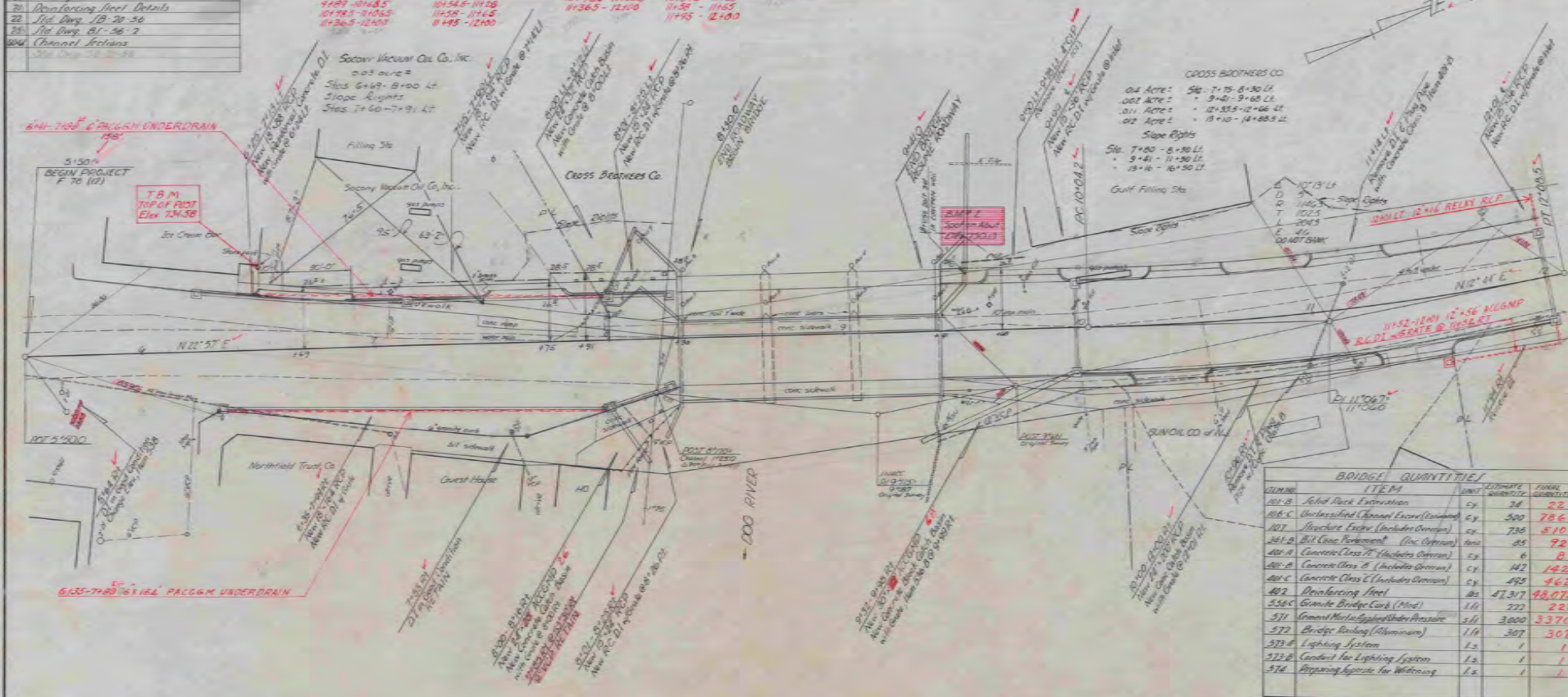
LT.	RT.
6445-6455	6445-6455
6455-6465	6455-6465
6465-6475	6465-6475
6475-6485	6475-6485
6485-6495	6485-6495
6495-6505	6495-6505
6505-6515	6505-6515
6515-6525	6515-6525
6525-6535	6525-6535
6535-6545	6535-6545
6545-6555	6545-6555
6555-6565	6555-6565
6565-6575	6565-6575
6575-6585	6575-6585
6585-6595	6585-6595
6595-6605	6595-6605
6605-6615	6605-6615
6615-6625	6615-6625
6625-6635	6625-6635
6635-6645	6635-6645
6645-6655	6645-6655
6655-6665	6655-6665
6665-6675	6665-6675
6675-6685	6675-6685
6685-6695	6685-6695
6695-6705	6695-6705
6705-6715	6705-6715
6715-6725	6715-6725
6725-6735	6725-6735
6735-6745	6735-6745
6745-6755	6745-6755
6755-6765	6755-6765
6765-6775	6765-6775
6775-6785	6775-6785
6785-6795	6785-6795
6795-6805	6795-6805
6805-6815	6805-6815
6815-6825	6815-6825
6825-6835	6825-6835
6835-6845	6835-6845
6845-6855	6845-6855
6855-6865	6855-6865
6865-6875	6865-6875
6875-6885	6875-6885
6885-6895	6885-6895
6895-6905	6895-6905
6905-6915	6905-6915
6915-6925	6915-6925
6925-6935	6925-6935
6935-6945	6935-6945
6945-6955	6945-6955
6955-6965	6955-6965
6965-6975	6965-6975
6975-6985	6975-6985
6985-6995	6985-6995
6995-7005	6995-7005

5' ONE COURSE CEMENT CONCRETE SIDEWALK at COMMERCIAL DRIVES

LT.	RT.
7150-7160	7150-7160
7160-7170	7160-7170
7170-7180	7170-7180
7180-7190	7180-7190
7190-7200	7190-7200
7200-7210	7200-7210
7210-7220	7210-7220
7220-7230	7220-7230
7230-7240	7230-7240
7240-7250	7240-7250
7250-7260	7250-7260
7260-7270	7260-7270
7270-7280	7270-7280
7280-7290	7280-7290
7290-7300	7290-7300
7300-7310	7300-7310
7310-7320	7310-7320
7320-7330	7320-7330
7330-7340	7330-7340
7340-7350	7340-7350
7350-7360	7350-7360
7360-7370	7360-7370
7370-7380	7370-7380
7380-7390	7380-7390
7390-7400	7390-7400
7400-7410	7400-7410
7410-7420	7410-7420
7420-7430	7420-7430
7430-7440	7430-7440
7440-7450	7440-7450
7450-7460	7450-7460
7460-7470	7460-7470
7470-7480	7470-7480
7480-7490	7480-7490
7490-7500	7490-7500
7500-7510	7500-7510
7510-7520	7510-7520
7520-7530	7520-7530
7530-7540	7530-7540
7540-7550	7540-7550
7550-7560	7550-7560
7560-7570	7560-7570
7570-7580	7570-7580
7580-7590	7580-7590
7590-7600	7590-7600
7600-7610	7600-7610
7610-7620	7610-7620
7620-7630	7620-7630
7630-7640	7630-7640
7640-7650	7640-7650
7650-7660	7650-7660
7660-7670	7660-7670
7670-7680	7670-7680
7680-7690	7680-7690
7690-7700	7690-7700

BRIDGE DATA

NO.	1	2	3	4	5	6	7	8	9
1	10.0	10.0	10.0	10.0	10.0	10.0	10.0	10.0	10.0
2	10.0	10.0	10.0	10.0	10.0	10.0	10.0	10.0	10.0
3	10.0	10.0	10.0	10.0	10.0	10.0	10.0	10.0	10.0
4	10.0	10.0	10.0	10.0	10.0	10.0	10.0	10.0	10.0
5	10.0	10.0	10.0	10.0	10.0	10.0	10.0	10.0	10.0
6	10.0	10.0	10.0	10.0	10.0	10.0	10.0	10.0	10.0
7	10.0	10.0	10.0	10.0	10.0	10.0	10.0	10.0	10.0
8	10.0	10.0	10.0	10.0	10.0	10.0	10.0	10.0	10.0
9	10.0	10.0	10.0	10.0	10.0	10.0	10.0	10.0	10.0



CROSS BROTHERS CO

014 ACRES	Sig. 7-75-8+30 LT
007 ACRES	9+40-9+60 LT
011 ACRES	12+55-12+60 LT
012 ACRES	13+10-14+00 LT

Slope Rights

Sig. 7+00-8+30 LT
9+40-11+30 LT
13+10-14+30 LT

Curf Filling Site

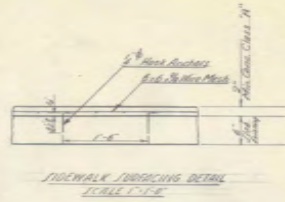
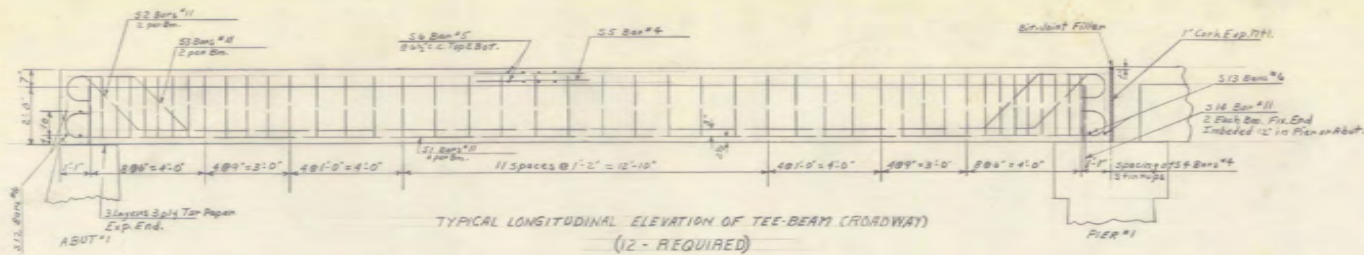
BRIDGE QUANTITIES

ITEM	QUANTITY	UNIT	FINAL QUANTITY
401-B	24	sq. ft.	24
405-C	500	sq. ft.	500
407	736	sq. ft.	736
408-B	65	sq. ft.	65
408-C	6	sq. ft.	6
409-C	442	sq. ft.	442
409-C	495	sq. ft.	495
402	47,317	sq. ft.	47,317
556-C	111	sq. ft.	111
571	3,000	sq. ft.	3,000
572	307	sq. ft.	307
573-B	1	sq. ft.	1
573-B	1	sq. ft.	1
574	1	sq. ft.	1

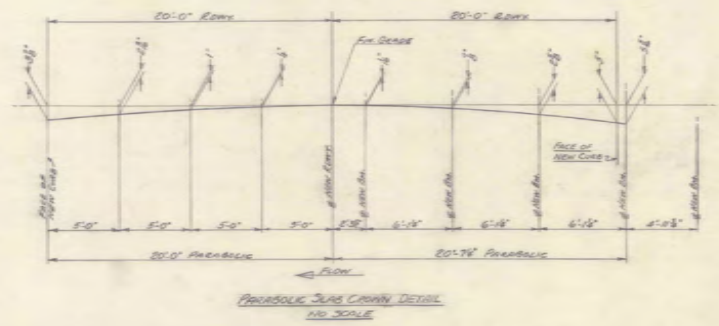
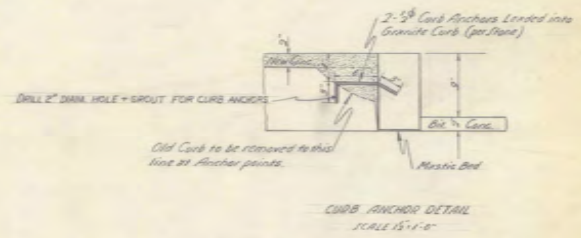
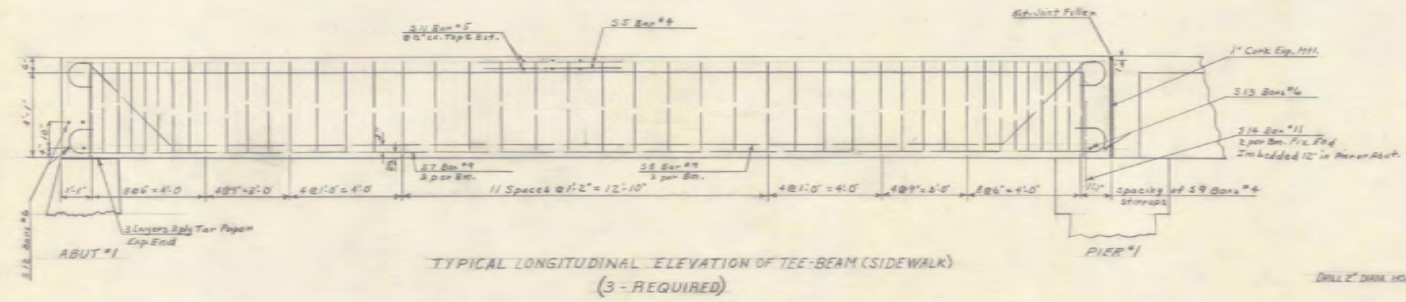
BRIDGE DATA

Overall Length	111' 0"	111' 0"
Clear Span	30' 33" 0"	30' 33" 0"
Clear Height	15' 0"	15' 0"
Roadway Width	21' 0"	40' 0"
Waterway	100'	100'
Elev. Abut. Height	724'	724'

NOOTFIELD
F. 70(12)
Sheet 9 of 14 Sheets



NOTE
Existing Concrete Sidewalk Downstream Side to be cleaned free from all loose material. This area to be covered with 6" x 6" Wire Mesh reinforcing held in place by 5/8 Heat Anchors driven into present slab as per detail. Anchors to be spaced 18" @ both ways. Surface to be wetted for one day, and painted with a mixture of NEAT CEMENT & WATER IMMEDIATELY BEFORE PLACING NEW CONCRETE, UNDER DIRECTION OF THE ENGINEER BEFORE POURING NEW CONCRETE CLASS "A". IN EVENT THE 5/8 HEAT ANCHORS CANNOT BE DRIVEN, THEN HOLES SHALL BE DRILLED, HEAT ANCHORS INSTALLED AND GROUTED.



LIST OF QUANTITIES

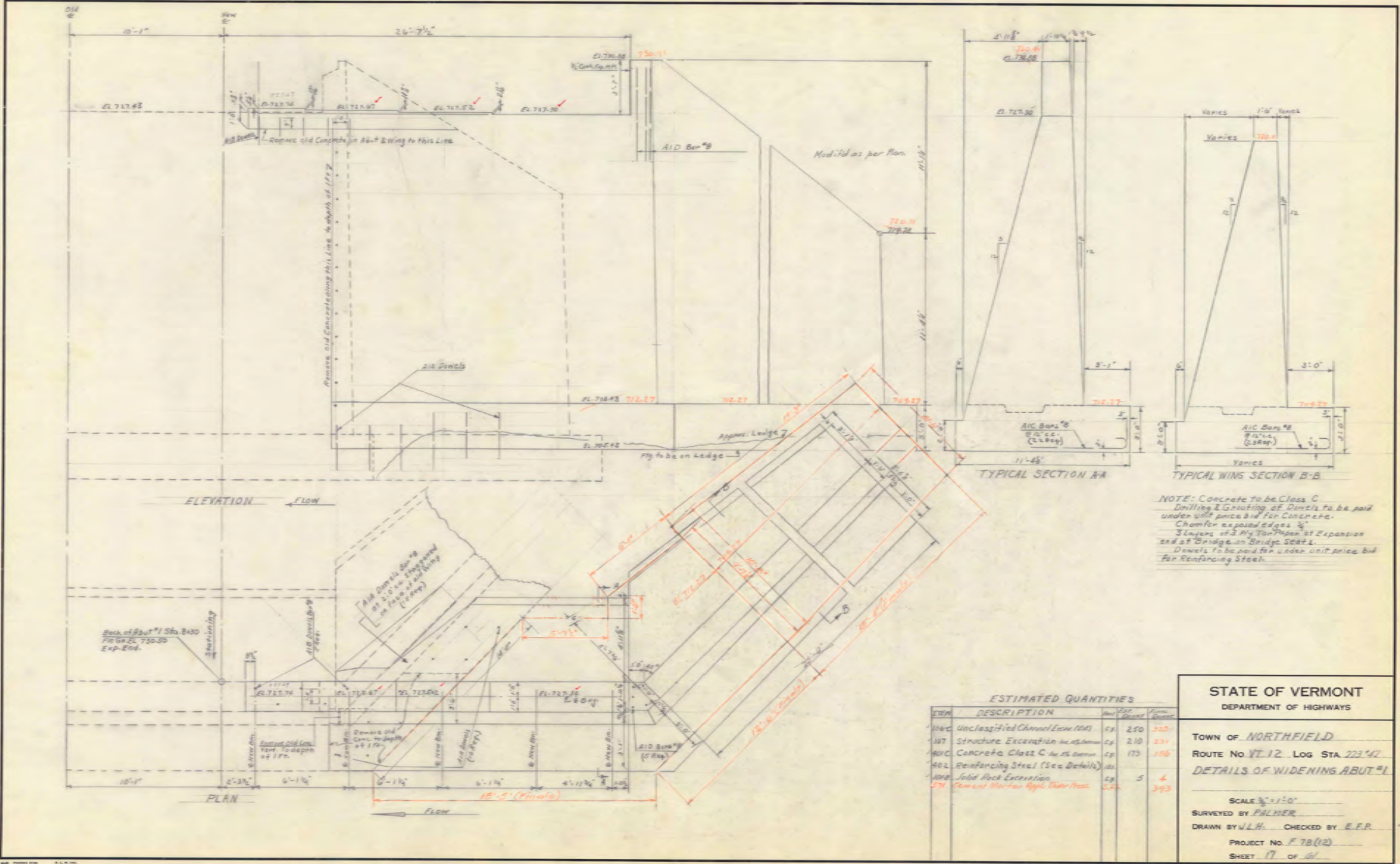
ITEM	QUANTITY	UNIT	EST. QUANTITY	EST. PRICE
1160-16	11.60M	Yards	11.6	22
3418	Bit Conc. Pave.	Sq. Yds.	54	92
401-A	Concrete Class "A"	Sq. Yds.	6	9
401-B	"	Sq. Yds.	142	44
402	Reinforcing Steel (See Details)	Lbs.		
556-C	Granite Bridge Curb (Mod.)	L.F.	222	452
571	Granite Slab (See Note Page 1, 2)	Sq. Yds.		950
572	Bridge railing (Aluminum)	L.F.	347	507
572-A	Lighting System	L.F.	1	1
572-B	Conduit for Lighting System	L.F.	1	1
574	Preparing Aggregate for Wetting	L.F.	1	1

STATE OF VERMONT
DEPARTMENT OF HIGHWAYS

TOWN OF NORTHFIELD
ROUTE No. VT 12 LOG STA. 228+00

DETAILS OF SUPERSTRUCTURE

SCALE 1/2"=1'-0"
SURVEYED BY PALMER
DRAWN BY J.L.H. CHECKED BY E.P.P.
PROJECT No. F 78(12)
SHEET 14 OF 61



ESTIMATED QUANTITIES

ITEM	DESCRIPTION	Unit	Quantity	Unit Price	Total
004C	Unclassified Channel Earth (Exc)	cu yd	250	323	
107	Structure Excavation in situ	cu yd	210	231	
002C	Concrete Class C in situ	cu yd	170	156	
002L	Reinforcing Steel (See Details)	lbs			
0000	Solid Rock Excavation	cu yd	5	4	
574	Cement Mortar Appl. Three Coat	sq yd			343

STATE OF VERMONT
 DEPARTMENT OF HIGHWAYS

TOWN OF NORTHFIELD
 ROUTE No. VT. 12 LOG STA. 223+42
DETAILS OF WIDENING ABUT #1

SCALE 1/4" = 1'-0"
 SURVEYED BY PALMER
 DRAWN BY J.L.H. CHECKED BY E.P.P.
 PROJECT No. F.78(12)
 SHEET 17 OF 21

