

(D)  
RAMP D CURVE DATA  
Δ 62° 36' RT.  
D 14.832836°  
R 386.28'  
T 234.86'  
L 422.04'  
E 65.79'  
2T-L 47.68'  
PC. 0+00.00  
P.I. 2+34.86 =  
1+87.18  
PT. 4+22.04  
BANK .080 FT./FT.

(TD)  
TEMP. RAMP D CURVE DATA  
Δ 5° 10' 25" RT.  
D 4.0370761°  
R 1419.24'  
T 64.12'  
L 128.15'  
E 1.45'  
2T-L 0.09'  
PC. 9+30.84  
P.I. 9+94.96 =  
9+94.87  
PT. 10+58.99  
BANK .063 FT./FT.

(A)  
RAMP A CURVE DATA  
Δ 13° 30' RT.  
D 3° 45'  
R 1527.89'  
T 180.83'  
L 360.00'  
E 10.68'  
2T-L 1.66'  
PC. 0+02.56  
P.I. 1+83.39 =  
1+81.73  
PT. 3+62.56  
BANK .060 FT./FT.

(S)  
SPUR CURVE DATA  
Δ 12° 54' 49.8" LT.  
D 1° 30'  
R 3819.72'  
T 432.28'  
L 860.92'  
E 24.41'  
2T-L 3.64'  
PC. 104+74.59  
P.I. 109+06.88 =  
109+03.22  
PT. 113+35.51 =  
113+36.06  
EQ. = -0.55'  
BANK .040 FT./FT.

(T.H.)  
T.H. 16 CURVE DATA  
Δ 66° 37' 52" LT.  
D 21°  
R 272.84'  
T 179.33'  
L 317.29'  
E 53.66'  
2T-L 41.37'  
PC. 56+62.04  
P.I. 58+41.37 =  
58+00.00  
PT. 59+79.33  
DO NOT BANK

(T.H.)  
T.H. 16 CURVE DATA  
Δ 27° 48' 07" LT.  
D 12°  
R 477.465'  
T 118.17'  
L 231.68'  
E 14.41'  
2T-L 4.66'  
PC. 61+06.83  
P.I. 62+25.00 =  
62+20.34  
PT. 63+38.51  
DO NOT BANK

(T.H.)  
T.H. 16 CURVE DATA  
Δ 39° 13' 59" RT.  
D 14°  
R 409.26'  
T 145.86'  
L 280.24'  
E 25.22'  
2T-L 11.48'  
PC. 64+38.14  
P.I. 65+84.00 =  
65+72.52  
PT. 67+18.38  
BANK .070 FT./FT.

(T.H.)  
T.H. 16 CURVE DATA  
Δ 24° 15' RT.  
D 10°  
R 572.96'  
T 123.09'  
L 242.50'  
E 13.07'  
2T-L 3.68'  
PC. 69+38.10  
P.I. 70+61.19 =  
70+57.51  
PT. 71+80.60 =  
ORIG. SURV. 71+98.60  
EQ. = -18.00'  
BANK .059 FT./FT.

(CO)  
CROSSOVER CURVE DATA  
Δ 8° 53' LT.  
D 1° 30'  
R 3819.72'  
T 296.71'  
L 592.22'  
E 11.53'  
2T-L 1.20'  
PC. 0+00.00  
P.I. 2+96.71 =  
2+95.51  
PT. 5+92.22  
BANK .040 FT./FT.

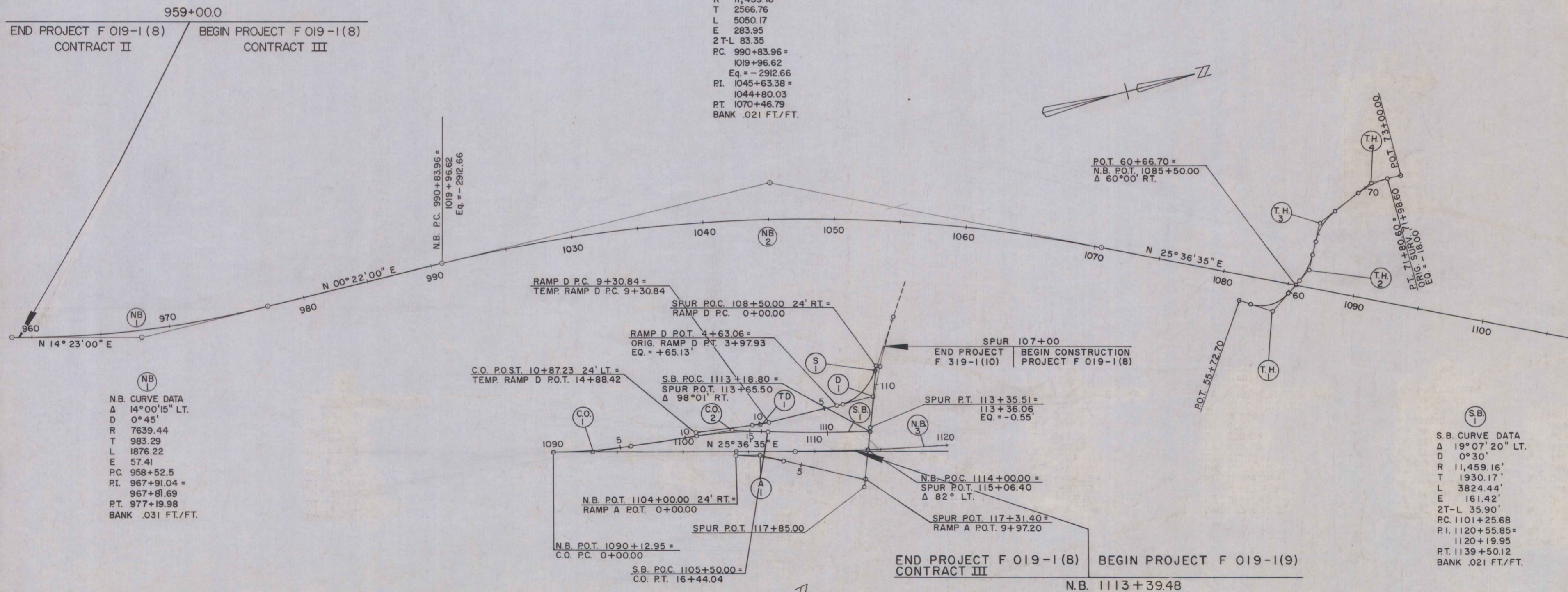
(CO)  
CROSSOVER CURVE DATA  
Δ 11° 09' RT.  
D 2.002°  
R 2861.93'  
T 279.35'  
L 556.94'  
E 13.60'  
2T-L 1.76'  
PC. 10+87.10  
P.I. 13+66.45 =  
13+64.69  
PT. 16+44.04  
BANK .051 FT./FT.

(NB)  
NB. CURVE DATA  
Δ 25° 15' 03" RT.  
D 0° 30'  
R 11,459.16'  
T 2566.76'  
L 5050.17'  
E 283.95'  
2T-L 83.35'  
PC. 990+83.96 =  
1019+96.62  
Eq. = -2912.66  
PT. 1045+63.38 =  
1044+80.03  
PT. 1070+46.79  
BANK .021 FT./FT.

(NB)  
NB. CURVE DATA  
Δ 14° 00' 15" LT.  
D 0° 45'  
R 7639.44'  
T 983.29'  
L 1876.22'  
E 57.41'  
PC. 958+52.5  
P.I. 967+91.04 =  
967+81.69  
PT. 977+19.98  
BANK .031 FT./FT.

(S.B.)  
S.B. CURVE DATA  
Δ 19° 07' 20" LT.  
D 0° 22'  
R 11,459.16'  
T 1930.17'  
L 3824.44'  
E 161.42'  
2T-L 35.90'  
PC. 1101+25.68  
P.I. 1120+55.85 =  
1120+19.95  
PT. 1139+50.12  
BANK .021 FT./FT.

(NB)  
NB. CURVE DATA  
Δ 13° 14' 30" LT.  
D 0° 30'  
R 15,626.127'  
T 1813.76'  
L 3611.36'  
E 104.91'  
2T-L 16.16'  
PC. 1108+58.27  
P.I. 1126+72.03 =  
1126+55.87  
PT. 1144+69.63  
BANK .021 FT./FT.



ALIGNMENT SHEET

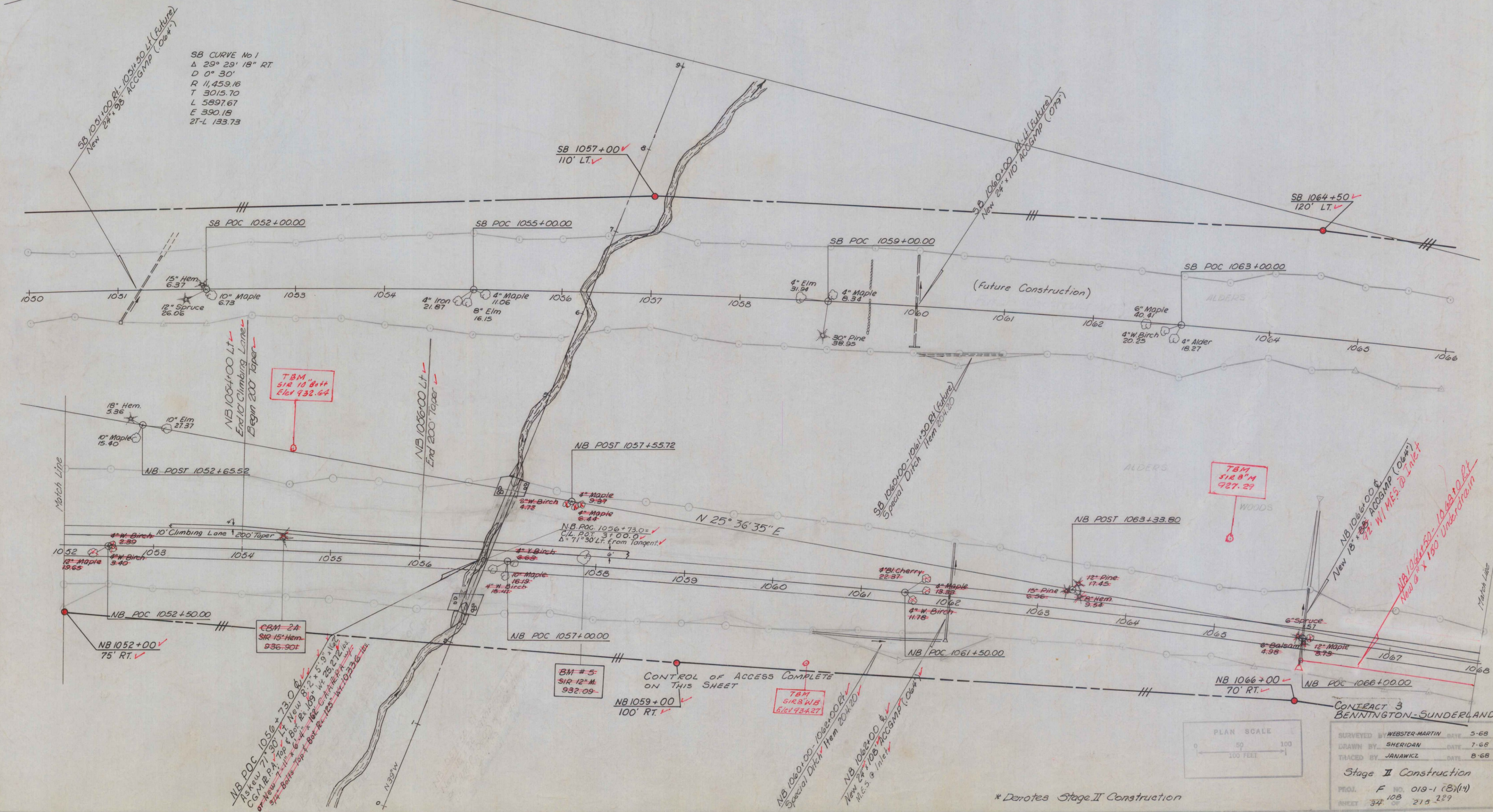
SURVEYED BY \_\_\_\_\_ DATE \_\_\_\_\_  
DRAWN BY \_\_\_\_\_ DATE \_\_\_\_\_  
TRACED BY \_\_\_\_\_ DATE \_\_\_\_\_  
BENNINGTON - SUNDERLAND  
PROJECT F No. 019-1(8) CONT. III  
019-1(44)  
SHEET 27 OF 215 229

PI 1052+97.74 =  
1051 +64.01  
N 00° 31' E  
N 30° 00' 05" E

Woven Wire Fence w/Steel Posts  
1052+00-1068+00 RT Lt ✓

Sand Borrow  
NB 1064+50 - 1068+00  
Vt Grid

SB CURVE No 1  
Δ 29° 29' 18" RT  
D 0° 30'  
R 11,459.16  
T 3015.70  
L 5897.67  
E 390.18  
2T-L 133.73



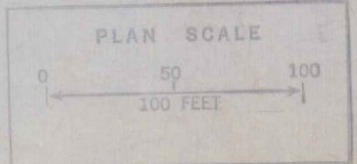
TBM  
518 10' 8 1/4  
Elev 932.64

TBM  
518 8' 11  
927.29

TBM  
518 8' 11 1/2  
Elev 932.27

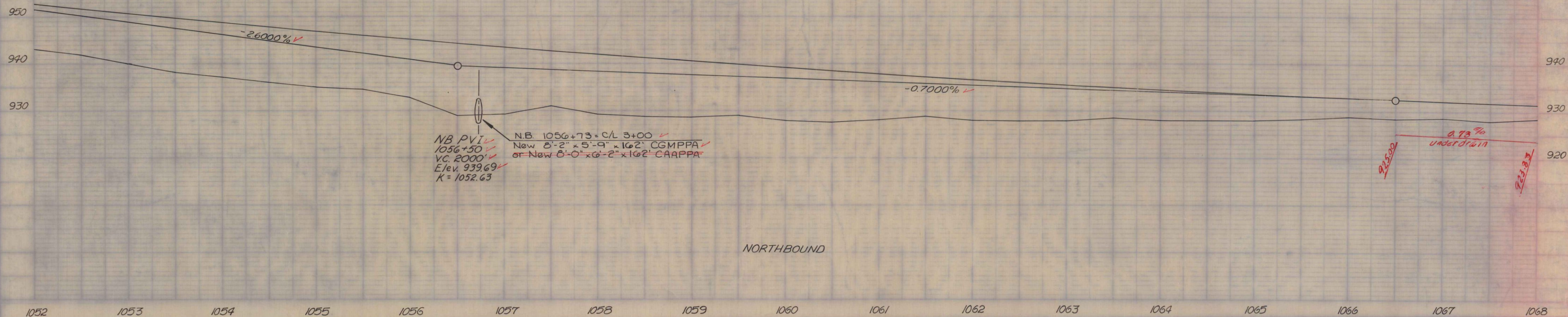
NB POC 1056+73.02 ✓  
As New 71' 30" Lt New 8' 2" x 5' 9" 1/2  
C.G. M.B. P.A. Top of Box 105' 11" x 23' 2 1/2"  
of New 7' 11" x 6' 11" x 10' 11" x 10' 11" x 10' 11" x 10' 11"  
9' 4" Borings Top of Box 105' 11" x 10' 11" x 10' 11" x 10' 11" x 10' 11" x 10' 11"

CONTROL OF ACCESS COMPLETE  
ON THIS SHEET  
NB 1059+00  
100' RT ✓



CONTRACT 3  
BENNINGTON-SUNDERLAND  
SURVEYED BY WEBSTER-MARTIN DATE 5-68  
DRAWN BY SHERIDAN DATE 7-68  
TRACED BY JANAWICZ DATE 8-68  
Stage II Construction  
PROJ. F NO. 019-1 (8)(14)  
108  
SHEET 34 OF 215 229

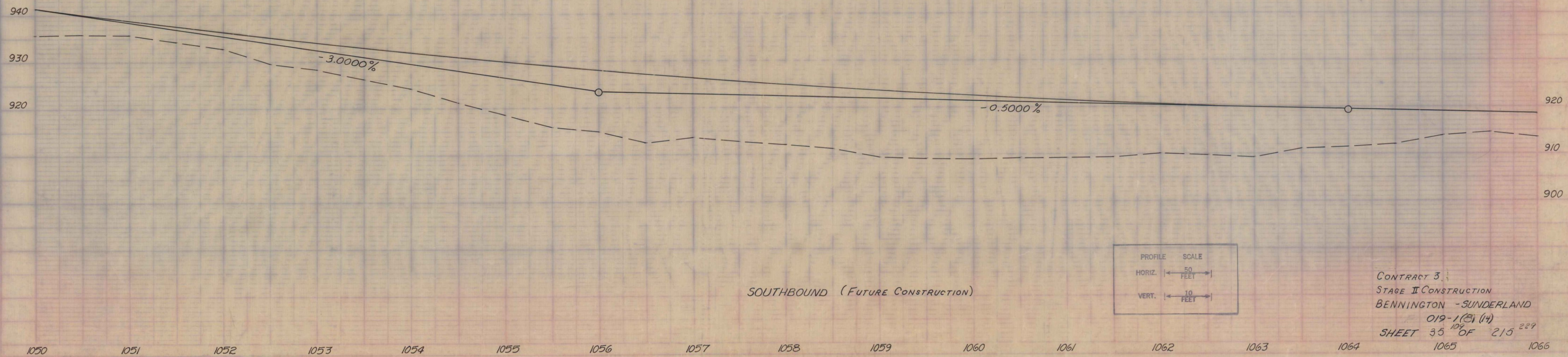
\* Denotes Stage II Construction



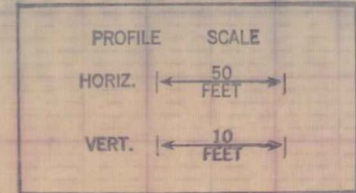
NORTHBOUND

1052 1053 1054 1055 1056 1057 1058 1059 1060 1061 1062 1063 1064 1065 1066 1067 1068  
 STAGE II FINISH GRADES SHOWN  
 STAGE I SUBGRADE ELEVATIONS 2.67' (R'8") BELOW

SB PVI  
 1056+00  
 VC. 1600'  
 Elev. 923.15  
 K. 640



SOUTHBOUND (FUTURE CONSTRUCTION)



CONTRACT 3  
 STAGE II CONSTRUCTION  
 BENNINGTON - SUNDERLAND  
 019-1(2) (14)  
 SHEET 35 OF 215<sup>229</sup>  
 1065 1066

