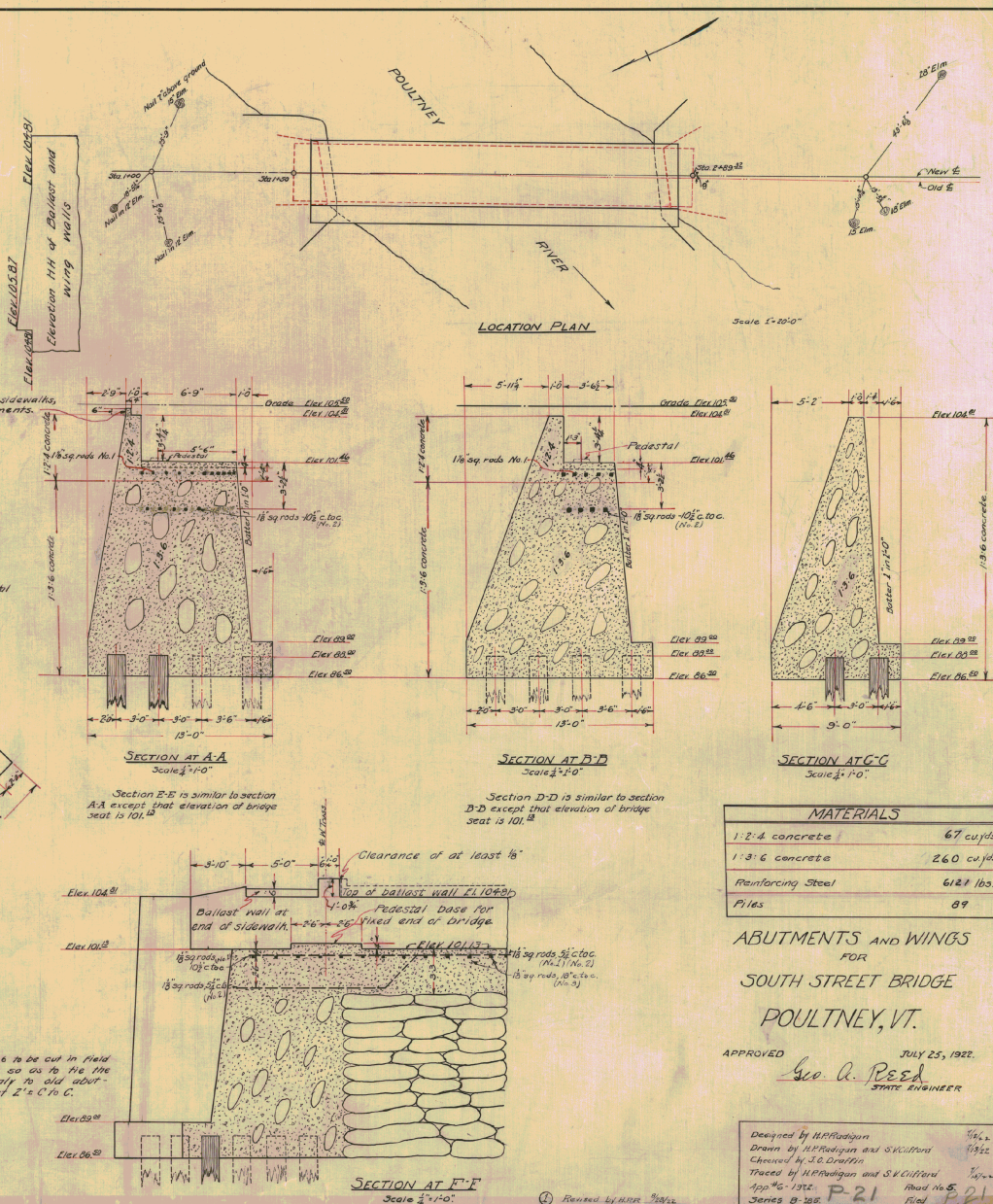


Designed	F. W. Gorran	7/7/22
Drawn	F. W. Gorran	7/8/22
Traced	R. E. Cruckshank	7/14/22
Series <u>B 295</u> No.		Filed <u>P-2</u>
App. No. 6	1922	Read No. 5 Sheet 1 of 2



MATERIALS	
1:2:4 concrete	67 cu yds
1:3:6 concrete	260 cu yds
Reinforcing Steel	612 lbs.
Piles	89

ABUTMENTS AND WINGS
FOR
SOUTH STREET BRIDGE
POULTNEY, VT.

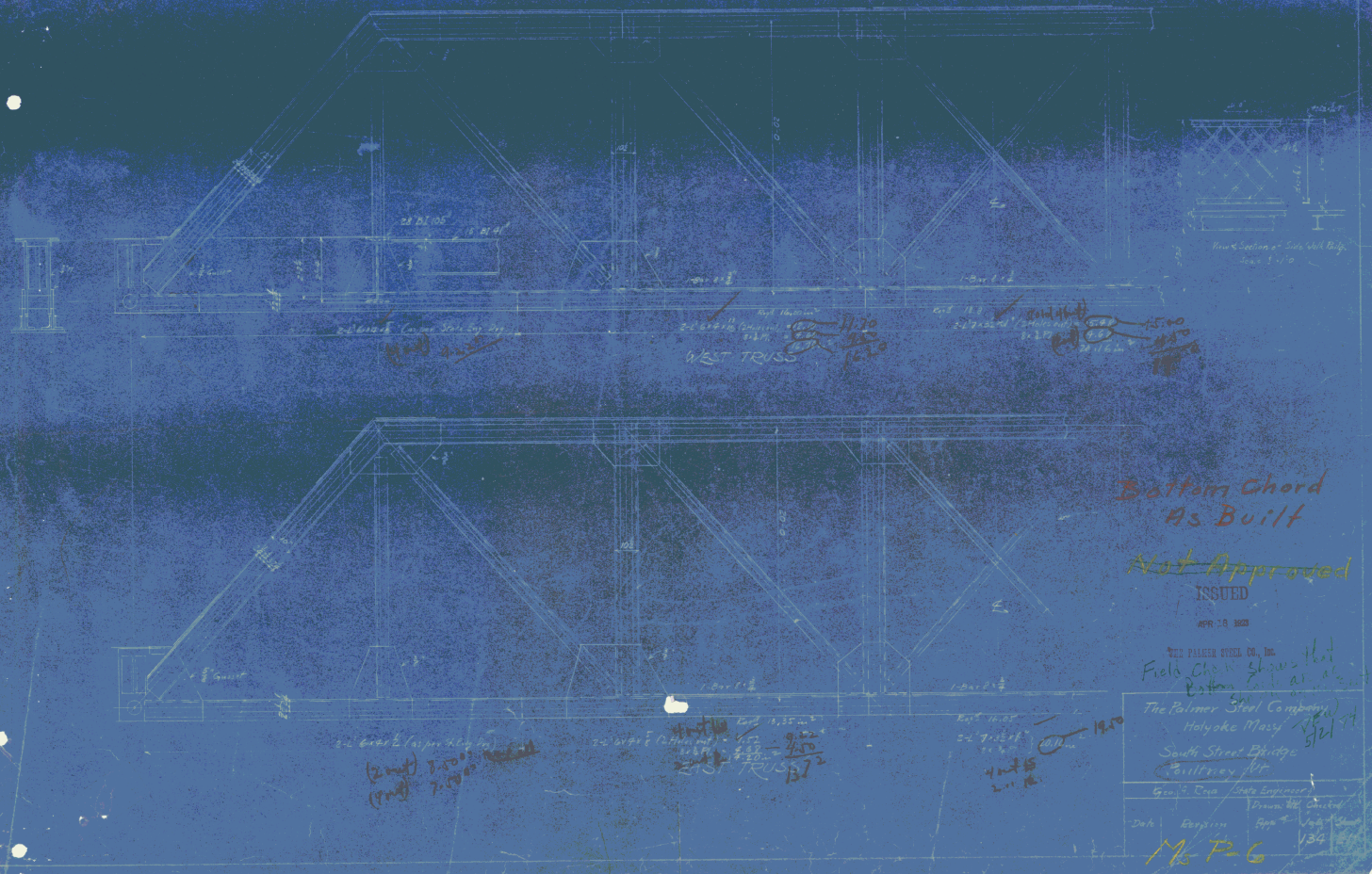
APPROVED JULY 25, 1922.
Geo. A. Reed
STATE ENGINEER

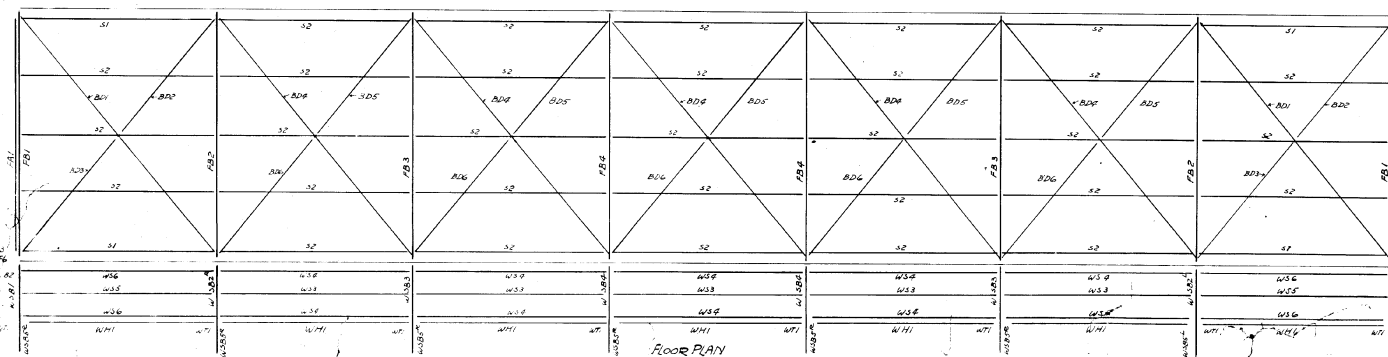
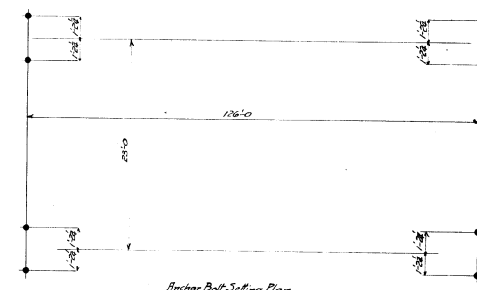
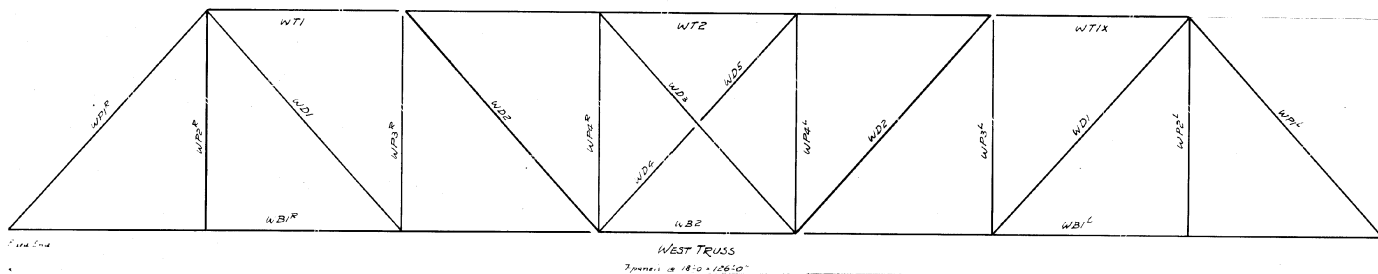
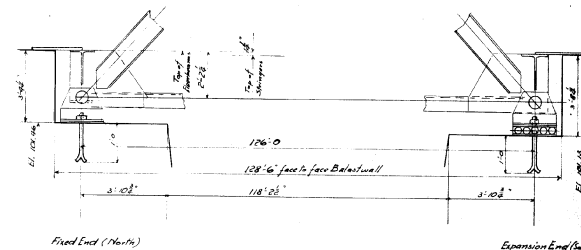
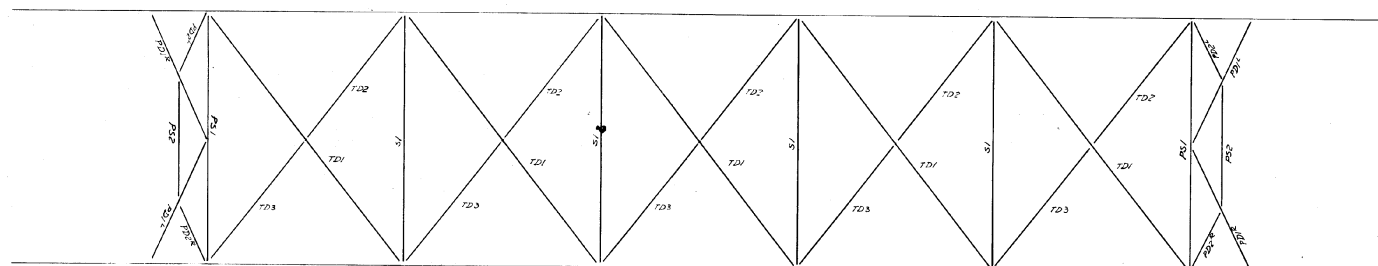
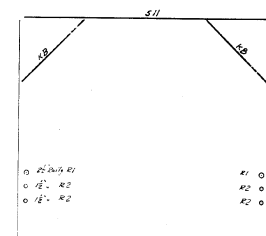
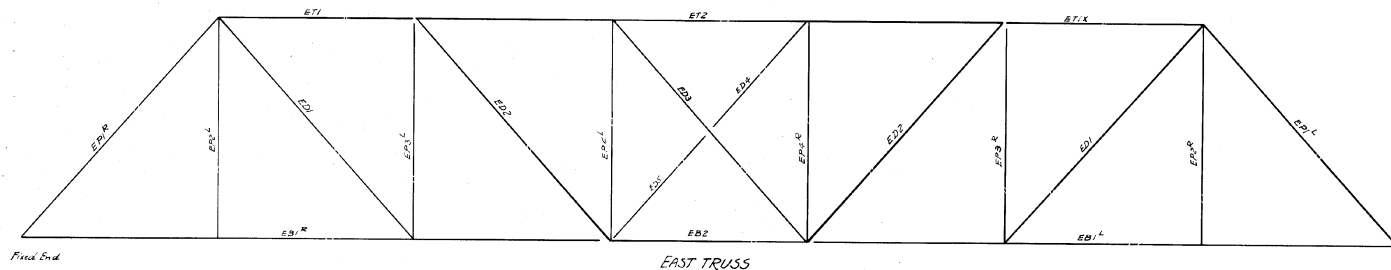
Designed by H.P. Radigan 1/6/22
 Drawn by H.P. Radigan and S.K. Clifford 1/13/22
 Checked by J.C. Draffin
 Traced by H.P. Radigan and S.K. Clifford 1/17/22
 App #6-1922 P-21 Road No 5
 Series 8-108 Filed P-21

BUILT BY
THE
PALMER STEEL CO.
HOLYOKE, MASS.
1923

BRIDGE NAMEPLATE, C.I.
Scale: Full Size.

SO. ST. BR.
DOUTNEY

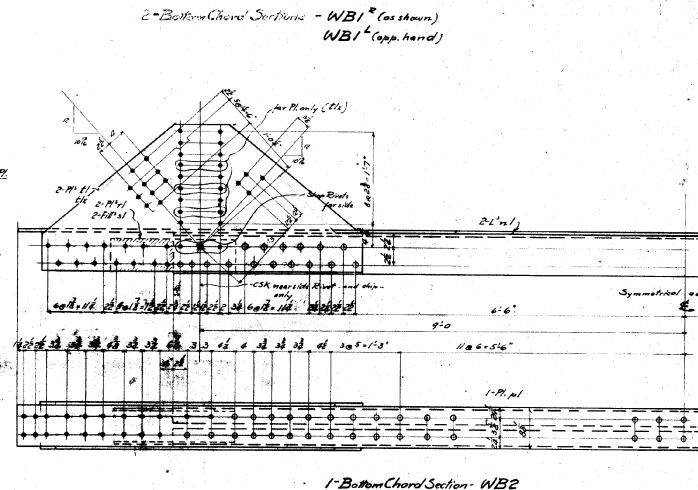




The Palmer Steel Company
HOLYOKE, MASS

*SOUTH STREET BRIDGE-POULTNEY-VT.
ERECTION PLAN
Geo A Reed- State Engineer*

Nov 11 12			
Scale 1/8"=10', 3/8"=10'		Field Paints: one coat of red lead + turpentine oil	Notes Chances
Per Date		Expenses	10' 10'

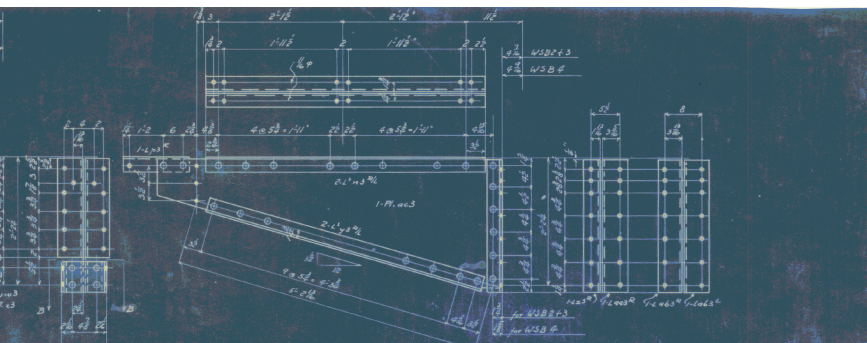
[illegible]

The Palmer Steel Company
HOLYOKE, MASS.

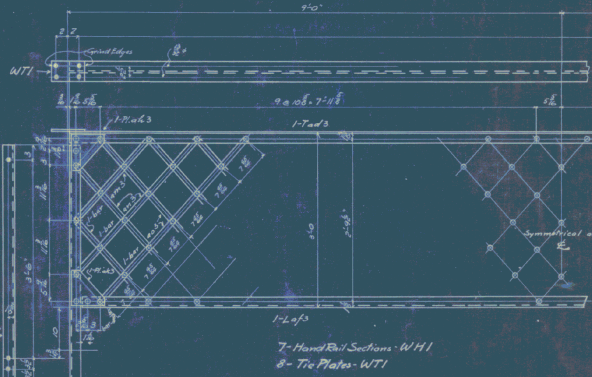
SOUTH STREET BRIDGE - POULTNEY-VT.
WEST TRUSS

GEO A REED - STATE ENGINEER

MAN. 2.50					
Modes 12m	EYE DIST 8'	3 Plates - one each of red lead and covered w:			Price \$675
Plates 9' x 6"	WELD -				
No. 2477		REVISION	App	\$ 8	SHIP
				1.37	



2-Side Walk Brackets-WSBI



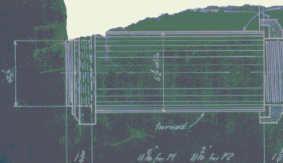
2-Struts-PS2

7- Hand Rail Sections - WT
8- Tie Plates - WT

7-Side Walk Braces WSB5^R
1- " " WSB5^L

The Palmer Steel Company
HOLYOKE, MASS.

SOUTH STREET BRIDGE-POULTNEY-VT.



	Ship No.	Ship Name	Material	Length ft.	Breadth ft.	Remarks		Ship No.	Ship Name	Material	Length ft.	Breadth ft.	Remarks
	4230	15	6 1/2" x 6"	12	28			4232	15	3 1/2" x 3"	27	12	
	4236	6	6"	17	28			4238	16	4 1/2" x 6"	9	12	
	4237	6	1 1/2" x 6"	17	28			4239	15	6" x 6"	13	12	
	4238	6	1 1/2" x 6"	17	28			4240	15	6" x 6"	12	12	
	4242	5	3 1/2" x 6"	23	25			4243	6	4" x 6"	12	6"	
	4245	5	12" x 6"	0	1			4246	5	1 1/2" x 6"	13	12	
	4247	5	6" x 6"	17	28			4248	15	6" x 6"	9	12	
	4248	5	3 1/2" x 6"	13	25			4249	4	14" Round	1	9"	
	4249	6	6"	0	6			4250	6	6"			
	4251	5	3 1/2" x 6"	23	25			4252	5	1 1/2" x 6"	13	12	
	4253	5	6" x 6"	17	28			4254	5	6" x 6"	9	12	
	4255	5	3 1/2" x 6"	13	25			4256	4	14" Round	1	9"	
	4257	5	6" x 6"	17	28			4258	5	1 1/2" x 6"	13	12	
	4259	5	6" x 6"	17	28			4260	5	6" x 6"	9	12	
	4261	5	3 1/2" x 6"	13	25			4262	5	6" x 6"	9	12	
	4263	5	6" x 6"	17	28			4264	5	6" x 6"	9	12	
	4265	5	3 1/2" x 6"	13	25			4266	5	6" x 6"	9	12	
	4267	5	6" x 6"	17	28			4268	5	6" x 6"	9	12	
	4269	5	3 1/2" x 6"	13	25			4270	5	6" x 6"	9	12	
	4271	5	6" x 6"	17	28			4272	5	6" x 6"	9	12	
	4273	5	3 1/2" x 6"	13	25			4274	5	6" x 6"	9	12	
	4275	5	6" x 6"	17	28			4276	5	6" x 6"	9	12	
	4277	5	3 1/2" x 6"	13	25			4278	5	6" x 6"	9	12	
	4279	5	6" x 6"	17	28			4280	5	6" x 6"	9	12	
	4281	5	3 1/2" x 6"	13	25			4282	5	6" x 6"	9	12	
	4283	5	6" x 6"	17	28			4284	5	6" x 6"	9	12	
	4285	5	3 1/2" x 6"	13	25			4286	5	6" x 6"	9	12	
	4287	5	6" x 6"	17	28			4288	5	6" x 6"	9	12	
	4289	5	3 1/2" x 6"	13	25			4290	5	6" x 6"	9	12	
	4291	5	6" x 6"	17	28			4292	5	6" x 6"	9	12	
	4293	5	3 1/2" x 6"	13	25			4294	5	6" x 6"	9	12	
	4295	5	6" x 6"	17	28			4296	5	6" x 6"	9	12	
	4297	5	3 1/2" x 6"	13	25			4298	5	6" x 6"	9	12	
	4299	5	6" x 6"	17	28			4300	5	6" x 6"	9	12	

1997, 1998, 1999, 2000, 2001, 2002, 2003, 2004, 2005, 2006, 2007, 2008, 2009, 2010, 2011, 2012, 2013, 2014, 2015, 2016, 2017, 2018, 2019, 2020, 2021, 2022, 2023, 2024, 2025, 2026, 2027, 2028, 2029, 2030, 2031, 2032, 2033, 2034, 2035, 2036, 2037, 2038, 2039, 2040, 2041, 2042, 2043, 2044, 2045, 2046, 2047, 2048, 2049, 2050, 2051, 2052, 2053, 2054, 2055, 2056, 2057, 2058, 2059, 2060, 2061, 2062, 2063, 2064, 2065, 2066, 2067, 2068, 2069, 2070, 2071, 2072, 2073, 2074, 2075, 2076, 2077, 2078, 2079, 2080, 2081, 2082, 2083, 2084, 2085, 2086, 2087, 2088, 2089, 2090, 2091, 2092, 2093, 2094, 2095, 2096, 2097, 2098, 2099, 2100, 2101, 2102, 2103, 2104, 2105, 2106, 2107, 2108, 2109, 2110, 2111, 2112, 2113, 2114, 2115, 2116, 2117, 2118, 2119, 2120, 2121, 2122, 2123, 2124, 2125, 2126, 2127, 2128, 2129, 2130, 2131, 2132, 2133, 2134, 2135, 2136, 2137, 2138, 2139, 2140, 2141, 2142, 2143, 2144, 2145, 2146, 2147, 2148, 2149, 2150, 2151, 2152, 2153, 2154, 2155, 2156, 2157, 2158, 2159, 2160, 2161, 2162, 2163, 2164, 2165, 2166, 2167, 2168, 2169, 2170, 2171, 2172, 2173, 2174, 2175, 2176, 2177, 2178, 2179, 2180, 2181, 2182, 2183, 2184, 2185, 2186, 2187, 2188, 2189, 2190, 2191, 2192, 2193, 2194, 2195, 2196, 2197, 2198, 2199, 2200, 2201, 2202, 2203, 2204, 2205, 2206, 2207, 2208, 2209, 2210, 2211, 2212, 2213, 2214, 2215, 2216, 2217, 2218, 2219, 2220, 2221, 2222, 2223, 2224, 2225, 2226, 2227, 2228, 2229, 2230, 2231, 2232, 2233, 2234, 2235, 2236, 2237, 2238, 2239, 2240, 2241, 2242, 2243, 2244, 2245, 2246, 2247, 2248, 2249, 2250, 2251, 2252, 2253, 2254, 2255, 2256, 2257, 2258, 2259, 2260, 2261, 2262, 2263, 2264, 2265, 2266, 2267, 2268, 2269, 2270, 2271, 2272, 2273, 2274, 2275, 2276, 2277, 2278, 2279, 2280, 2281, 2282, 2283, 2284, 2285, 2286, 2287, 2288, 2289, 2290, 2291, 2292, 2293, 2294, 2295, 2296, 2297, 2298, 2299, 2300, 2301, 2302, 2303, 2304, 2305, 2306, 2307, 2308, 2309, 2310, 2311, 2312, 2313, 2314, 2315, 2316, 2317, 2318, 2319, 2320, 2321, 2322, 2323, 2324, 2325, 2326, 2327, 2328, 2329, 2330, 2331, 2332, 2333, 2334, 2335, 2336, 2337, 2338, 2339, 2340, 2341, 2342, 2343, 2344, 2345, 2346, 2347, 2348, 2349, 2350, 2351, 2352, 2353, 2354, 2355, 2356, 2357, 2358, 2359, 2360, 2361, 2362, 2363, 2364, 2365, 2366, 2367, 2368, 2369, 2370, 2371, 2372, 2373, 2374, 2375, 2376, 2377, 2378, 2379, 2380, 2381, 2382, 2383, 2384, 2385, 2386, 2387, 2388, 2389, 2390, 2391, 2392, 2393, 2394, 2395, 2396, 2397, 2398, 2399, 2400, 2401, 2402, 2403, 2404, 2405, 2406, 2407, 2408, 2409, 2410, 2411, 2412, 2413, 2414, 2415, 2416, 2417, 2418, 2419, 2420, 2421, 2422, 2423, 2424, 2425, 2426, 2427, 2428, 2429, 2430, 2431, 2432, 2433, 2434, 2435, 2436, 2437, 2438, 2439, 2440, 2441, 2442, 2443, 2444, 2445, 2446, 2447, 2448, 2449, 2450, 2451, 2452, 2453, 2454, 2455, 2456, 2457, 2458, 2459, 2460, 2461, 2462, 2463, 2464, 2465, 2466, 2467, 2468, 2469, 2470, 2471, 2472, 2473, 2474, 2475, 2476, 2477, 2478, 2479, 2480, 2481, 2482, 2483, 2484, 2485, 2486, 2487, 2488, 2489, 2490, 2491, 2492, 2493, 2494, 2495, 2496, 2497, 2498, 2499, 2500, 2501, 2502, 2503, 2504, 2505, 2506, 2507, 2508, 2509, 2510, 2511, 2512, 2513, 2514, 2515, 2516, 2517, 2518, 2519, 2520, 2521, 2522, 2523, 2524, 2525, 2526, 2527, 2528, 2529, 2530, 2531, 2532, 2533, 2534, 2535, 2536, 2537, 2538, 2539, 2540, 2541, 2542, 2543, 2544, 2545, 2546, 2547, 2548, 2549, 2550, 2551, 2552, 2553, 2554, 2555, 2556, 2557, 2558, 2559, 2560, 2561, 2562, 2563, 2564, 2565, 2566, 2567, 2568, 2569, 2570, 2571, 2572, 2573, 2574, 2575, 2576, 2577, 2578, 2579, 2580, 2581, 2582, 2583, 2584, 2585, 2586, 2587, 2588, 2589, 2590, 2591, 2592, 2593, 2594, 2595, 2596, 2597, 2598, 2599, 2600, 2601, 2602, 2603, 2604, 2605, 2606, 2607, 2608, 2609, 2610, 2611, 2612, 2613, 2614, 2615, 2616, 2617, 2618, 2619, 2620, 2621, 2622, 2623, 2624, 2625, 2626, 2627, 2628, 2629, 2630, 2631, 2632, 2633, 2634, 2635, 2636, 2637, 2638, 2639, 2640, 2641, 2642, 2643, 2644, 2645, 2646, 2647, 2648, 2649, 2650, 2651, 2652, 2653, 2654, 2655, 2656, 2657, 2658, 2659, 2660, 2661, 2662, 2663, 2664, 2665, 2666, 2667, 2668, 2669, 2670, 2671, 2672, 2673, 2674, 2675, 2676, 2677, 2678, 26

...and the

© 2006 The Authors
Journal compilation © 2006 Blackwell Publishing Ltd