

Table of Contents	1
Addendum 2 Letter	2
Addendum 2 Plans	3



**State of Vermont**  
**Contract Administration**  
Barre City Place  
219 North Main Street, Suite 105  
Barre VT 05641  
<http://vtrans.vermont.gov>

*Agency of Transportation*  
*Finance & Administration*  
[phone] 802-622-1285  
[ttd] 800-253-0191

March 24, 2025

**Co3197 – Colchester HES NH 5600(14) C/2 Re-Ad**

**ADDENDUM #2**

Bidders:

Changes have been made to the documents located on the Bid Opportunity website as noted below:

**REVISED:**

- Plan sheets 318 and 326.

**ADDED:** None.

**DELETED:** None.

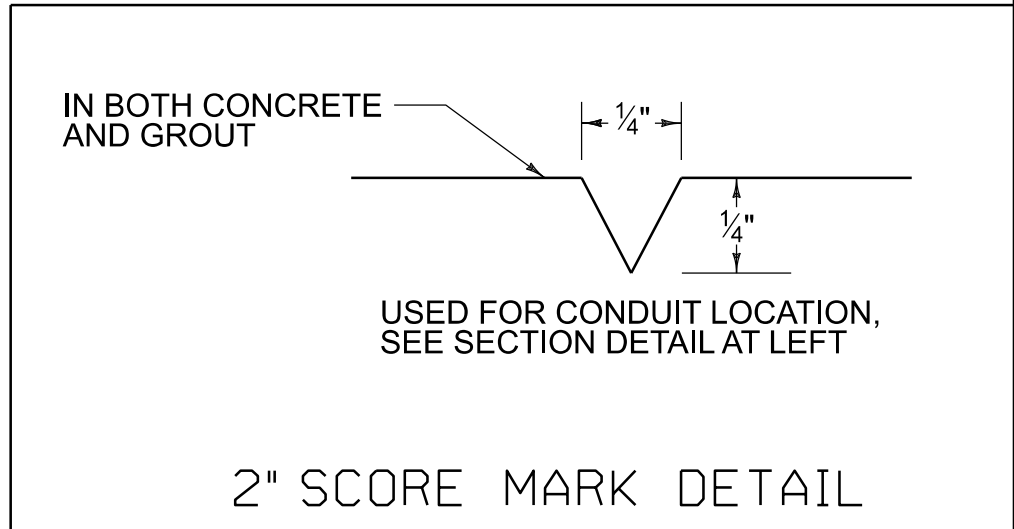
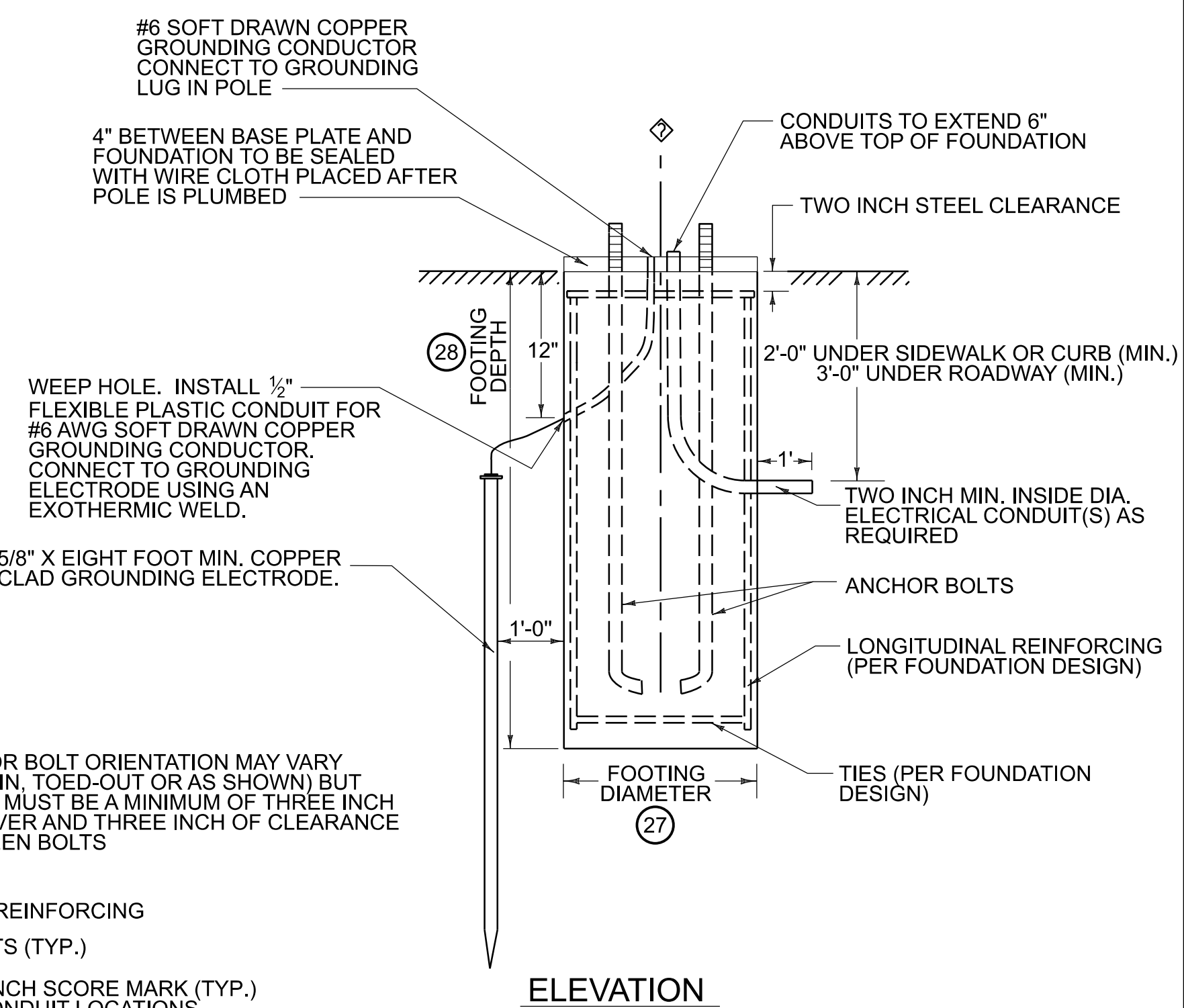
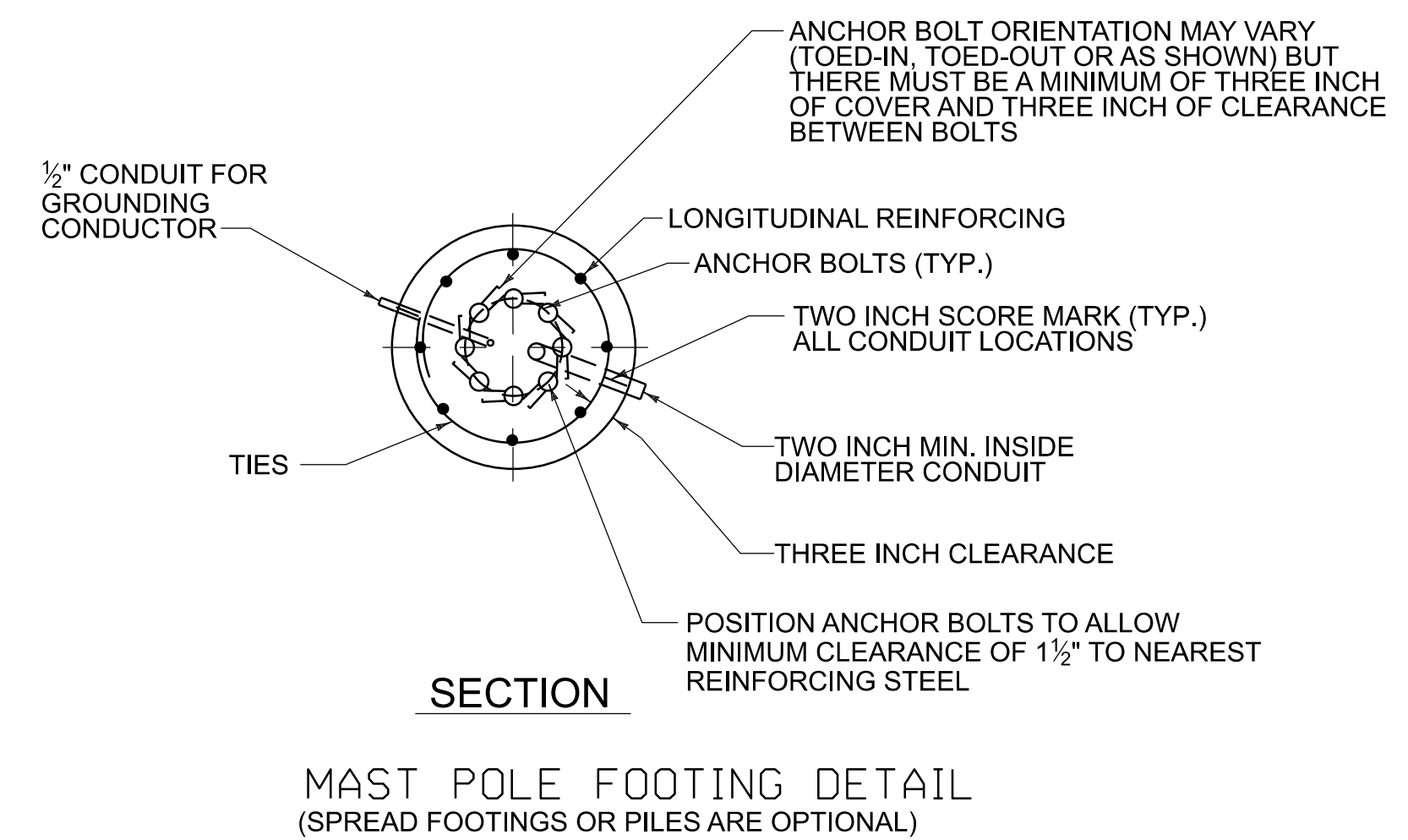
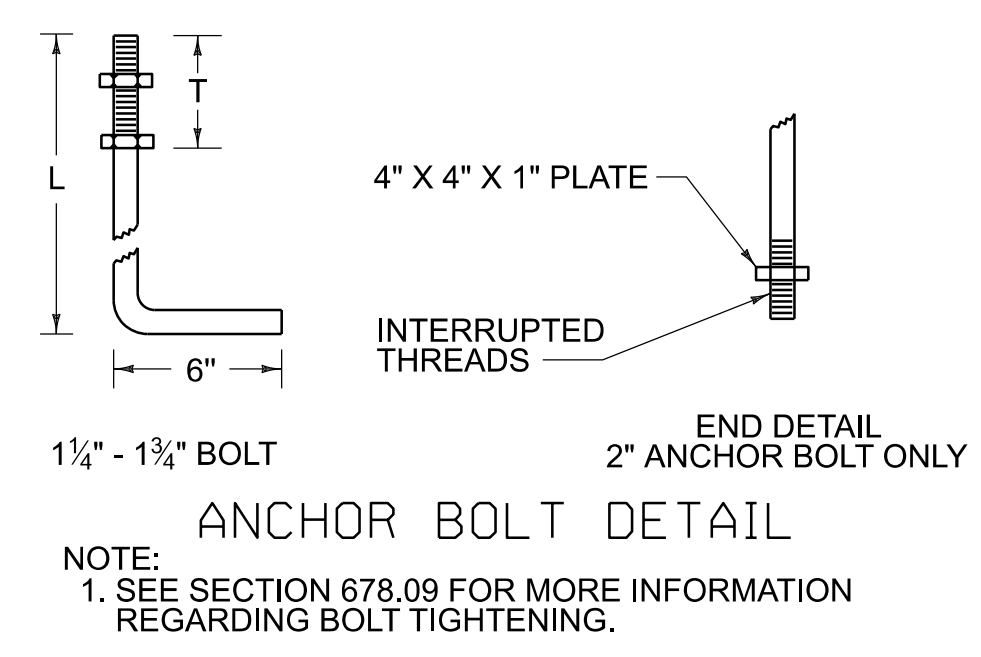
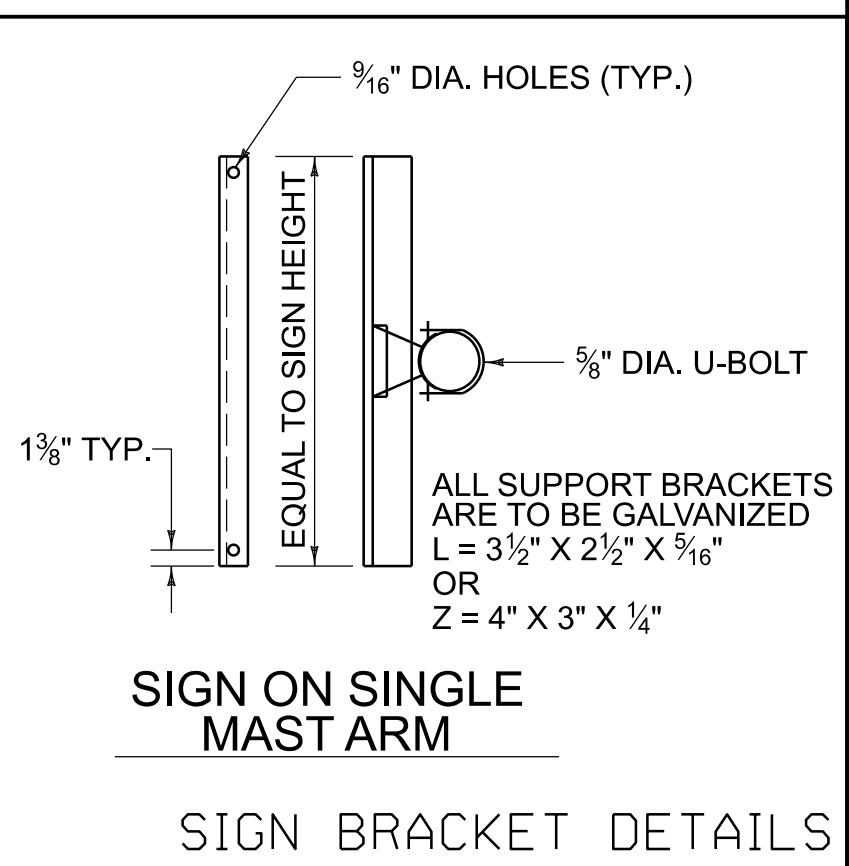
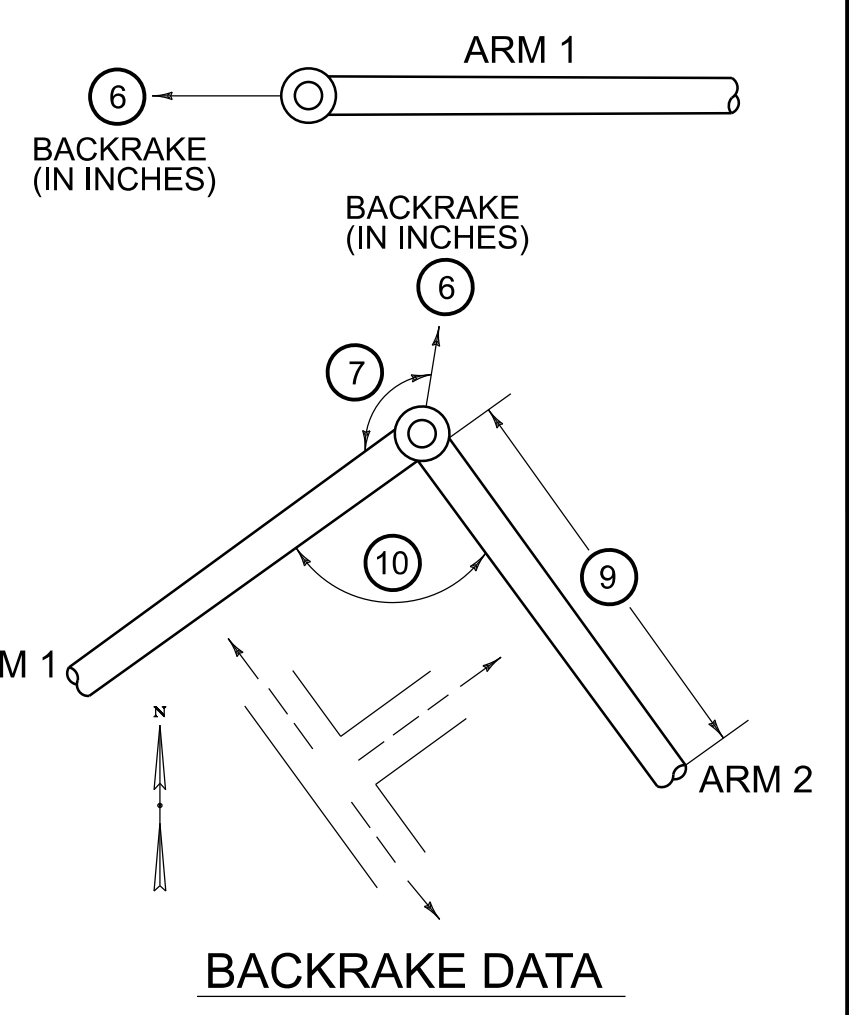
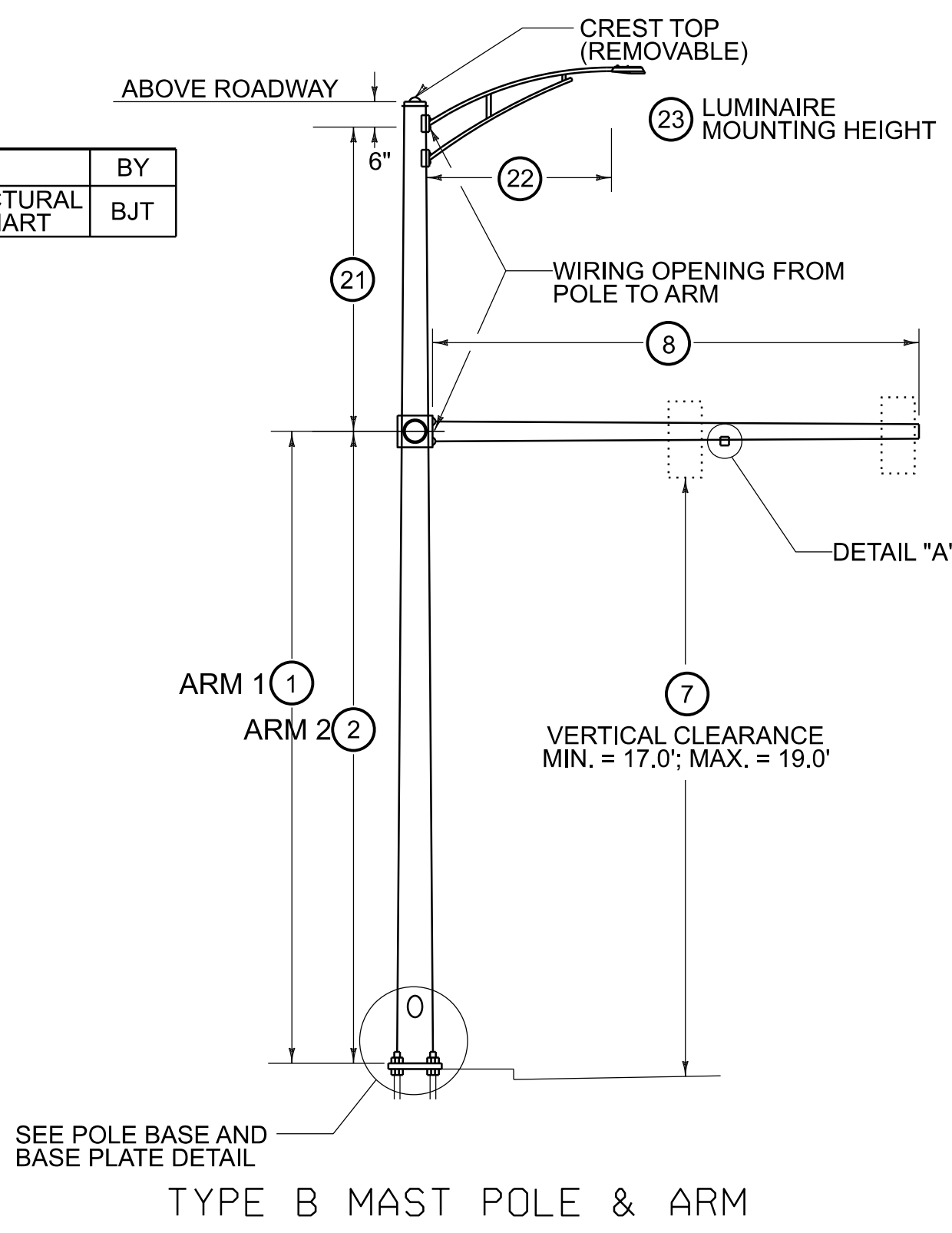
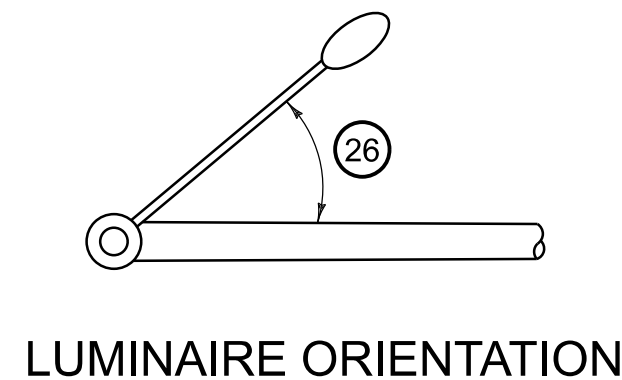
**VTrans Mission and Vision**

Through excellent customer service, provide for the safe and efficient movement of people and goods.  
A safe, reliable, and multimodal transportation system that grows the economy, is affordable to use and operate, and serves vulnerable populations.



MAST ARM, POLE & FOOTING DETAILS

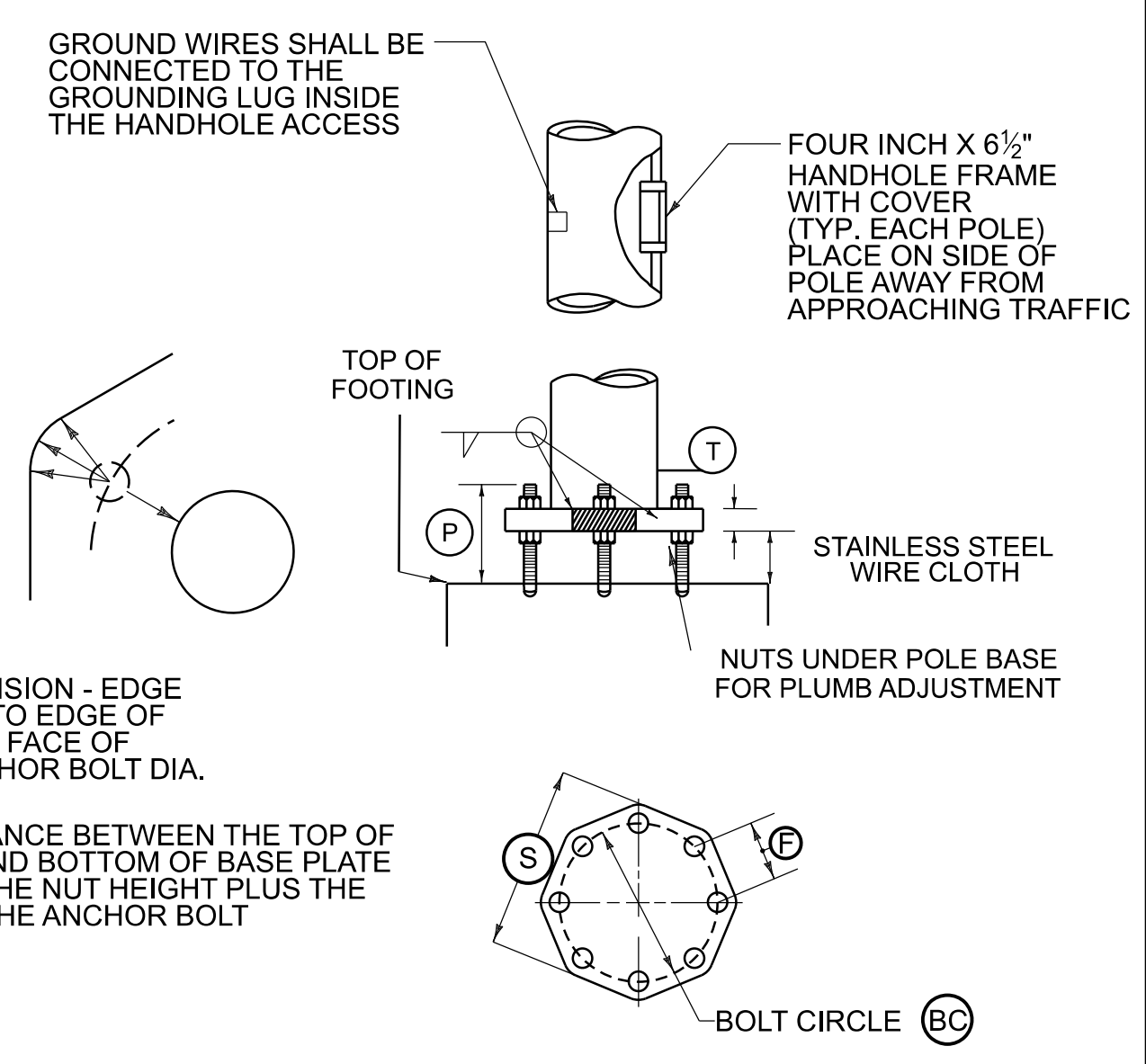
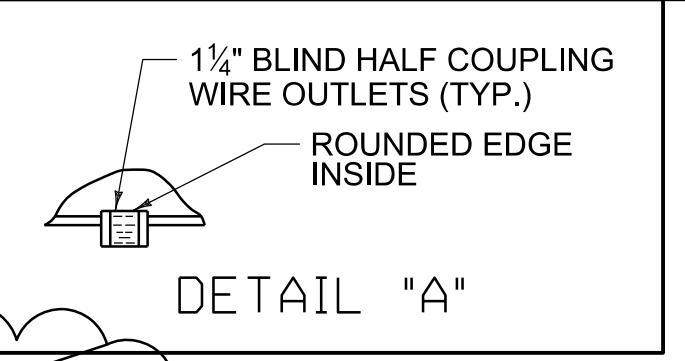
ADDENDUM	REVISION	PLOT DATE	REMOVE STRUCTURAL DIMENSIONS CHART	BY
△	1	19 MARCH 2025		BJT



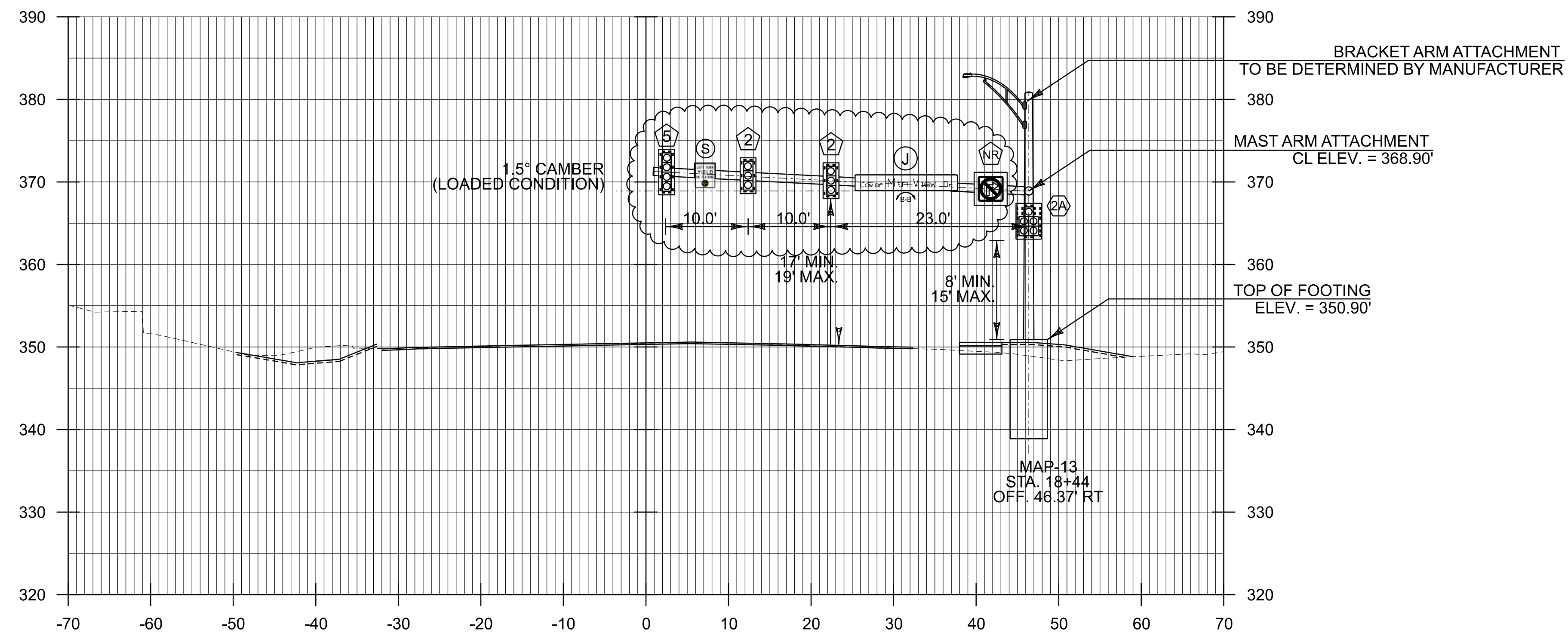
- NOTES
- SEE TRAFFIC SIGNAL GENERAL NOTES FOR ADDITIONAL INFORMATION.
  - MANUFACTURER TO DETERMINE TYPE OF STRUCTURE REQUIRED.
  - MINIMUM CLEARANCE FROM SIGNS TO ANY TRAVEL LANE SHALL BE 17'.
  - CONTRACTOR SHALL VERIFY ALL GROUND ELEVATIONS.
  - LUMINAIRES, ALL ASSOCIATED EQUIPMENT AND LABOR TO INSTALL SHALL BE PAID FOR UNDER CONTRACT ITEM NOS. 679.4600, 679.4700 AND 679.5000.

STRUCTURE DIMENSIONS																																		
POLE DATA							ARM DATA													LIGHTING DATA					FOOTING DATA		BASE PLATE / BOLT DATA							
POLE	TYPE	(1)	(2)	(3)	(4)	(5)	(6)	(7)	(8)	(9)	(10)	(11)	(12)	(13)	(14)	(15)	(16)	(17)	(18)	(19)	(20)	(21)	(22)	(23)	(24)	(25)	(26)	(27)	(B)	(F)	(S)	(T)	(P)	ANCHOR BOLT SIZE
MAP1		17.0							40													MAN	12	30	MAN	MAN								
MAP2		18.5							45													MAN	12	30	MAN	MAN								
MAP3		18.0							50													MAN	12	30	MAN	MAN								
MAP4		18.5							40													MAN	12	30	MAN	MAN								
MAP5		18.5							40													MAN	15	30	MAN	MAN								
MAP6		17.0							50																									
MAP7		18.0							50													MAN	15	30	MAN	MAN								
MAP8		17.0							50													MAN	15	30	MAN	MAN								
MAP9		17.0							50													MAN	15	30	MAN	MAN								
MAP10		19.0							45													MAN	15	30	MAN	MAN								
MAP11		19.5							50													MAN	15	30	MAN	MAN								
MAP12		18.5							50													MAN	15	30	MAN	MAN								
MAP13		18.0							50													MAN	12	30	MAN	MAN								
MAP14		19.0							55													MAN	12	30	MAN	MAN								
MAP15		20.0							42													MAN	12	30	MAN	MAN								
MAP16		18.5							40																									
MAP17		19.0							50																									
MAP19		20.5							25																									
MAP20		19.0							45																									
MAP21		19.5							50																									
MAP22		19.0							40																									
MAP23		18.0							30													MAN	12	30	MAN	MAN								
MAP24		18.5	18.5						30	20	90											MAN	12	30	MAN	MAN								
MAP25		17.5							24																									

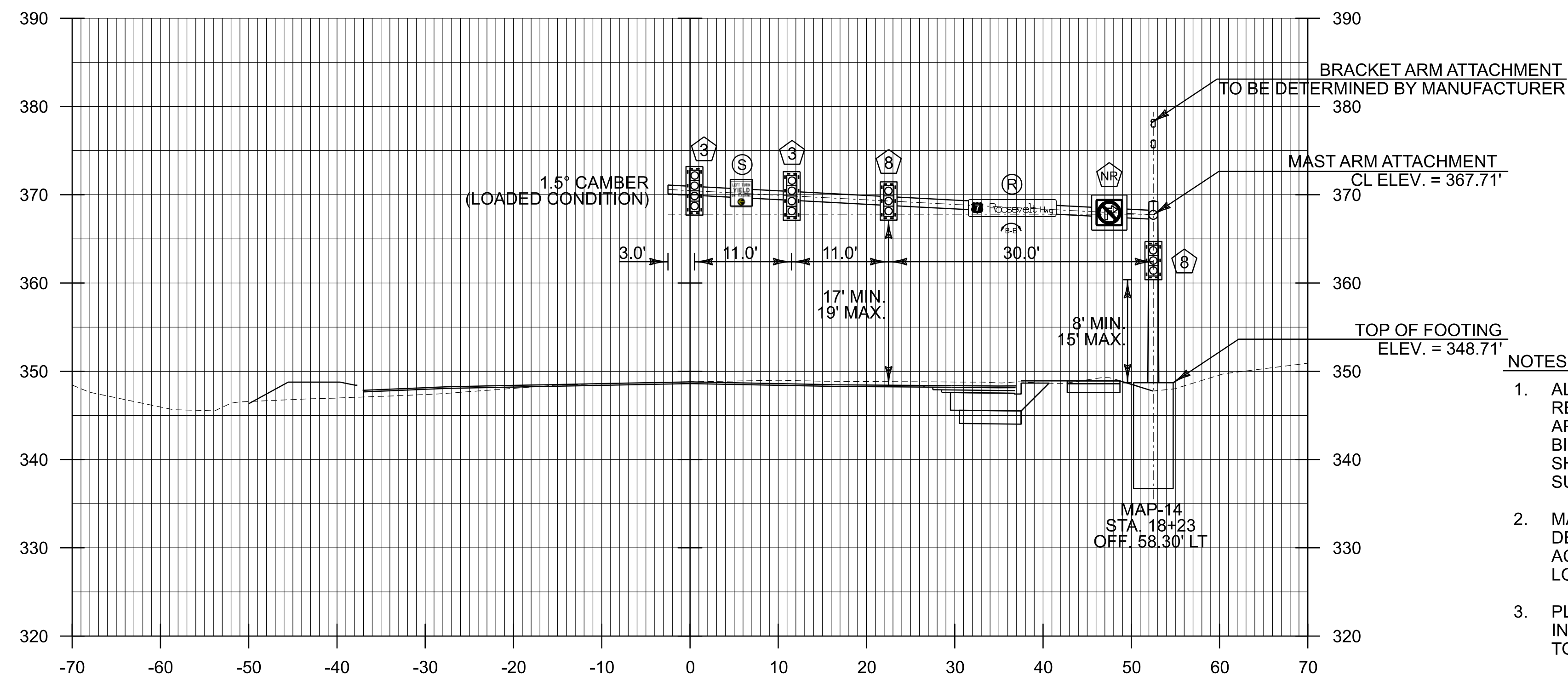
MAN = TO BE DETERMINED BY MANUFACTURER



PROJECT NAME: COLCHESTER	
PROJECT NUMBER: HES NH 5600(14) C/2 (Re-Ad)	
FILE NAME: sig_det04.dgn	PLOT DATE: 3/20/2025
PROJECT LEADER: M. LACROIX	DRAWN BY: B. TIETZE
DESIGNED BY: B. TIETZE	CHECKED BY: M. LACROIX
MAST ARM FOOTING DETAIL SHEET	SHEET 318 OF 405



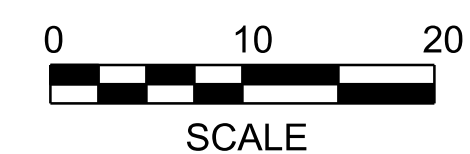
**18+44**  
MAST ARM #13  
LOOKING NORTH ON  
US ROUTE 7



**18+23**  
MAST ARM #14  
LOOKING WEST ON  
MOUNTAIN VIEW DRIVE

- NOTES:**
1. ALL MAST ARM FOOTINGS SHALL INCLUDE A FOUR INCH REVEAL. ELEVATIONS SHOWN IN CROSS-SECTIONS ARE APPROXIMATE FINAL GRADE ELEVATIONS FOR CONTRACTOR BIDDING PURPOSES ONLY. ACTUAL FOOTING ELEVATIONS SHALL BE DETERMINED BY THE CONTRACTOR PRIOR TO SUBMITTING WORKING DRAWINGS.
  2. MAST ARM FOOTING SIZES ARE NOT TO SCALE. FOOTING DESIGNS SHALL BE DETERMINED BY THE CONTRACTOR IN ACCORDANCE WITH SOIL CONDITIONS AND ACTUAL MAST ARM LOADINGS TRANSMITTED TO THE TOP OF THE FOOTINGS.
  3. PLEASE REFER TO BORING LOG SHEETS FOR BORING INFORMATION. FOR ADDITIONAL INFORMATION PLEASE REFER TO THE GEOTECHNICAL REPORT.
  4. SIGNAL HEADS SHALL BE MOUNTED ON THE VERTICAL CENTER OF THE MAST ARM.

ADDENDUM	REVISION	PLOT DATE		BY
	1	20 MARCH 2025	REVISED MAP #13	BJT



PROJECT NAME: COLCHESTER	
PROJECT NUMBER: HES NH 5600(14) C/2 (Re-Ad)	
FILE NAME: sig_xs05B.dgn	PLOT DATE: 3/20/2025
PROJECT LEADER:M. LACROIX	DRAWN BY: B TIETZE
DESIGNED BY: B TIETZE	CHECKED BY:HSD
SIGNAL CROSS SECTION SHEET 6	SHEET 326 OF 405