

GENERAL NOTES:

1. WINGWALL FABRICATION SHALL CONFORM TO VAOT STANDARD SPECIFICATIONS, SECTION 540, PRECAST CONCRETE STRUCTURES.
2. CONCRETE SHALL HAVE A MINIMUM COMPRESSIVE STRENGTH OF 5,000 PSI AT 28 DAYS OF AGE.
3. AIR CONTENT SHALL BE 5.0 - 9.0%.
4. POSITION OF REINFORCEMENT TO BE MAINTAINED WITH THERMOPLASTIC CHAIRS OR PLASTIC TIPPED SLAB BOLSTERS. CHAIRS, TIE WIRES, AND OTHER DEVICES USED TO SUPPORT, POSITION, OR FASTEN EPOXY COATED REINFORCEMENT SHALL BE MADE OF OR COATED WITH DIELECTRIC MATERIAL.
5. SEE CURING METHOD THIS SHEET FOR CURING PROCEDURE DESCRIPTION.
6. SEE TYPICAL LEGEND THIS SHEET FOR IDENTIFICATION INFORMATION.
7. SEE FINISHING REQUIREMENTS SHEET 2 FOR SURFACE FINISH INFORMATION.
8. CONCRETE REPAIR MATERIAL (IF USED) TO BE IN ACCORDANCE WITH VAOT STANDARD SPECIFICATION SECTION 580.
9. REINFORCEMENT STEEL SHALL MEET VAOT STANDARD SPECIFICATION SUBSECTION 713.01(c) (EPOXY BAR), ASTM A615 GRADE 60. EPOXY MECHANICAL CONNECTORS SHALL MEET VAOT STANDARD SPECIFICATION SUBSECTION 713.02. REBAR SAMPLES TO BE PROVIDED FOR TESTING IN ACCORDANCE WITH SPEC.
10. SEE DIMENSIONAL TOLERANCES THIS SHEET.

DESIGN NOTES:

1. CONCRETE STRENGTH TO BE 5,000 PSI AT 28 DAYS FOR WINGWALL UNITS.
2. MIN. LIFTING (STRIPPING) STRENGTH = 3,500 PSI U.N.O.

DIMENSIONAL TOLERANCES:

1. WINGWALL THICKNESS = + $\frac{3}{4}$ ", - $\frac{1}{4}$ "
2. LENGTH OF SECTION = +1", - $\frac{1}{2}$ "
3. REINFORCEMENT POSITION: COVER - $\frac{1}{4}$ ", + $\frac{5}{8}$ " SPACING: ± 2 " (NON-CUMULATIVE). SEE GENERAL NOTE 4 FOR ADDITIONAL REINFORCEMENT PLACEMENT REQUIREMENTS.
4. LOCATION OF INSERTS & MECHANICAL SPLICERS WITHIN UNITS: ± 1 "
5. JOINT WIDTH: $\pm \frac{1}{4}$ "
6. LOCATION OF LIFTING DEVICES ± 6 "

TESTING/INSPECTION: VAOT

FINISHING:

1. SEE DWG S2 FOR WINGWALL FINISH SCHEDULE.

CURING METHOD (NON-ACCELERATED CURE / SATURATED COVER):

1. FOR EACH PRODUCTION DAY, CURING TEMPERATURES SHALL BE CONTINUOUSLY MONITORED THROUGH THE USE OF A SINGLE RECORDING TEMPERATURE PROBE. BOTH INTERNAL AND EXTERNAL CONCRETE TEMPERATURES SHALL BE MONITORED. THE CONCRETE SHALL BE COVERED WITH SATURATED BURLAP (PER THE FOLLOWING) AS SOON AS POSSIBLE TO PREVENT MARRING OF CONCRETE SURFACE AND PREMATURE DRYING OF CONCRETE SURFACE. THE CONCRETE SHALL BE RAISED TO AN INTERNAL TEMPERATURE OF NOT LESS THAN 68°F WITHIN THE FIRST 12 HOURS OF THE CURING PERIOD, AND SHALL BE MAINTAINED AT OR ABOVE 68°F FOR THE REMAINDER OF THE CURING PERIOD.
2. THE FOLLOWING STEPS SHALL BE FOLLOWED FOR EACH UNIT:
 - 2.1. COVER EACH UNIT WITH (2) LAYERS OF HEAVY, WATER-SATURATED BURLAP (OR OTHER MATERIAL ACCEPTABLE TO VAOT). THE BURLAP SHALL BE KEPT SATURATED AND THE CONCRETE INTERNAL TEMPERATURE NOT ALLOWED TO FALL BELOW 68°F.
 - 2.2. COVER THE SATURATED BURLAP WITH POLYETHYLENE SHEETING.
 - 2.3. IF REQUIRED, PLACE ELECTRIC HEATING BLANKETS OR CONCRETE INSULATING BLANKETS ON TOP OF THE POLYETHYLENE SHEETING.
3. THESE CONDITIONS SHALL BE MAINTAINED UNTIL 80% OF 28 DAY STRENGTH (4,000 PSI) AND 72 HRS HAS ELAPSED FROM TIME OF CASTING.
4. WINTER/SPRING CURING: ALL CONCRETE PLACEMENT WILL TAKE PLACE IN HEATED PRODUCTION BUILDINGS WHERE AMBIENT AIR TEMPERATURES ARE ABOVE 50°F. PRECAST ELEMENTS THAT ARE EXPOSED TO COLD WEATHER CONDITIONS AS DEFINED IN SECTION 540.07(i) MUST BE ALLOWED TO COOL AND DRY IN AN ENVIRONMENT OF AT LEAST 40°F FOR 24 HOURS PRIOR TO EXPOSURE TO COLD WEATHER CONDITONS.

THE FORT MILLER CO., INC.
 F.M. JOB#: 25105 PIECE ID:
 DATE OF MANUFACTURE:
 VT 110 B15

TYPICAL LEGEND
 MARKED ON INSIDE OF BOX/BACKFILL
 FACE OF WINGWALL

SHIP LOOSE MATERIALS:

1. (4) 8 TON LIFTING EYES (TO BE RETURNED) - ITEM #: 5338
 2. (2) 2 TON LIFTING EYES (TO BE RETURNED) - ITEM #: 5333
- NOTE: CONTRACTOR TO HAVE SHIPLOOSE ITEMS MARKED "TO BE RETURNED"
 SENT BACK TO F.M. VIA COMMON CARRIER

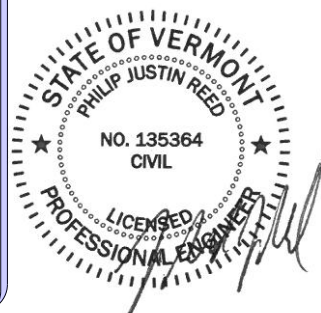
TABLE OF CONTENTS			
SHEET No.	DRAWING No.	TITLE	REVISION No.
1	S1	PRODUCTION NOTE SHEET	-
2	S2	WINGWALL LAYOUT AND DETAILS	-
3	S3	ANCHOR A & B DETAILS	1
3.1	S3.1	ANCHOR C DETAILS	-
4	S4	REINFORCEMENT DETAILS	1
4.1	S4.1	REINFORCEMENT DETAILS (CONT'D)	1
5	S5	WINGWALL 1 & 4 DETAILS	-
5.1	S5.1	WINGWAL 1 & 4 DETAILS (CONT'D)	-
6	S6	WINGWALL 2 & 3 DETAILS	1
7	S7	WINGWALL HANDLING DETAILS	-

Table of Units							
Mk. No.	Qty	ANCHORS		STEM		Total	
		Vol (CY)	Weight (T)	Vol (CY)	Weight (T)	Vol (CY)	Weight (T)
AW1	1	1.60	3.28	4.93	10.11	6.53	13.39
AW2	1	0.80	1.64	2.05	4.20	2.85	5.84
AW3	1	1.60	3.28	3.89	7.97	5.49	11.25
AW4	1	1.35	2.77	3.62	7.42	4.97	10.19

** WARNING: ALL WEIGHTS AND VOLUMES LISTED ARE BASED ON THE DESIGN THICKNESSES. ACTUAL WEIGHTS CAN AND DO VARY IN ACCORDANCE WITH ALLOWABLE TOLERANCES. ALL LIFTING EQUIPMENT NEEDS TO BE SIZED TAKING THIS FACT INTO CONSIDERATION!

1
 REVISED
 11/13/2023
 UPDATED LABELS,
 MOVE AW3 LIFTERS

Accepted
 BY: J. Griffin
 DATE: 11/21/2023
 RESUBMIT: No
 RECEIVED: November 21, 2023
 CKD BY: A. Lemieux
 STATE OF VERMONT
 AGENCY OF TRANSPORTATION



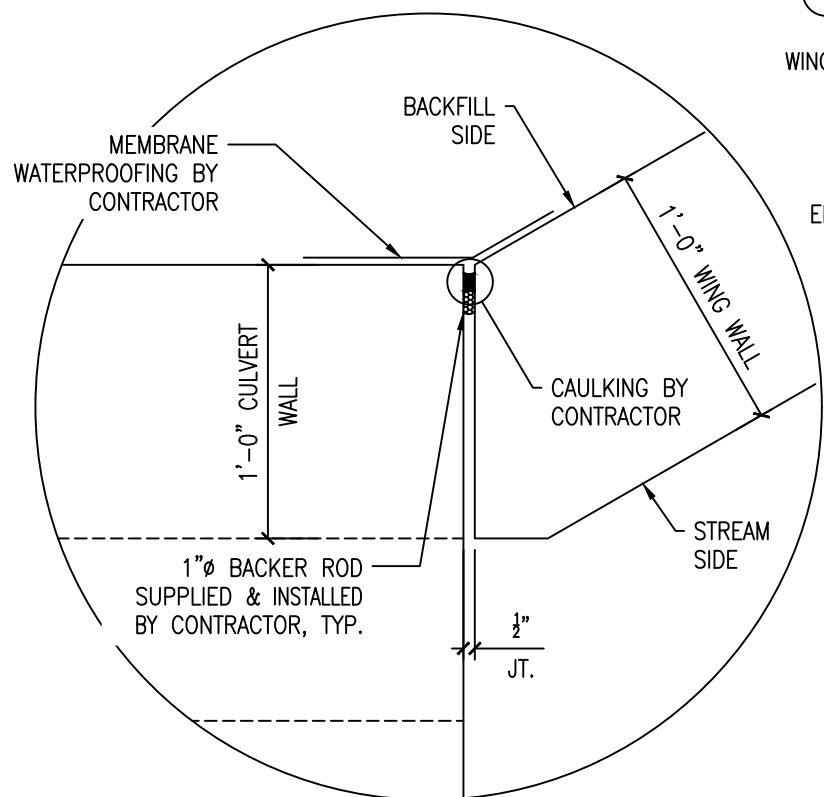
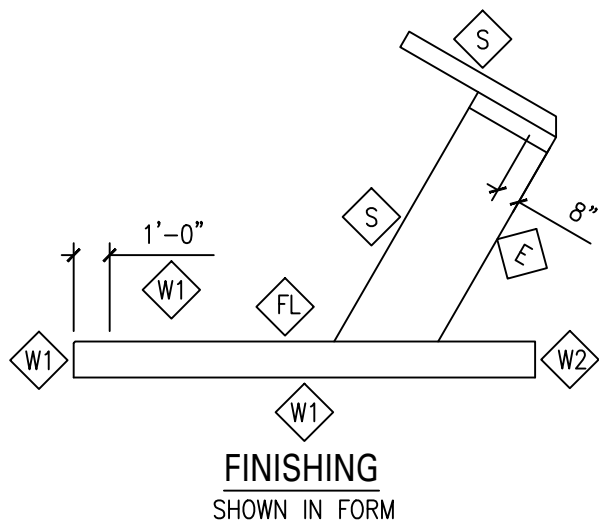
F.M.
 THE FORT MILLER Co., Inc.
 P.O. BOX 98
 SCHUYLERVILLE, NY 12871
 (518) 695-5000
 (518) 695-4970 FAX
 www.fortmiller.com

NO.	DATE	BY	DESCRIPTION
1	11/13/23	MAP	EDIT LABELS, MOVE AW3 LIFTERS

REVISIONS

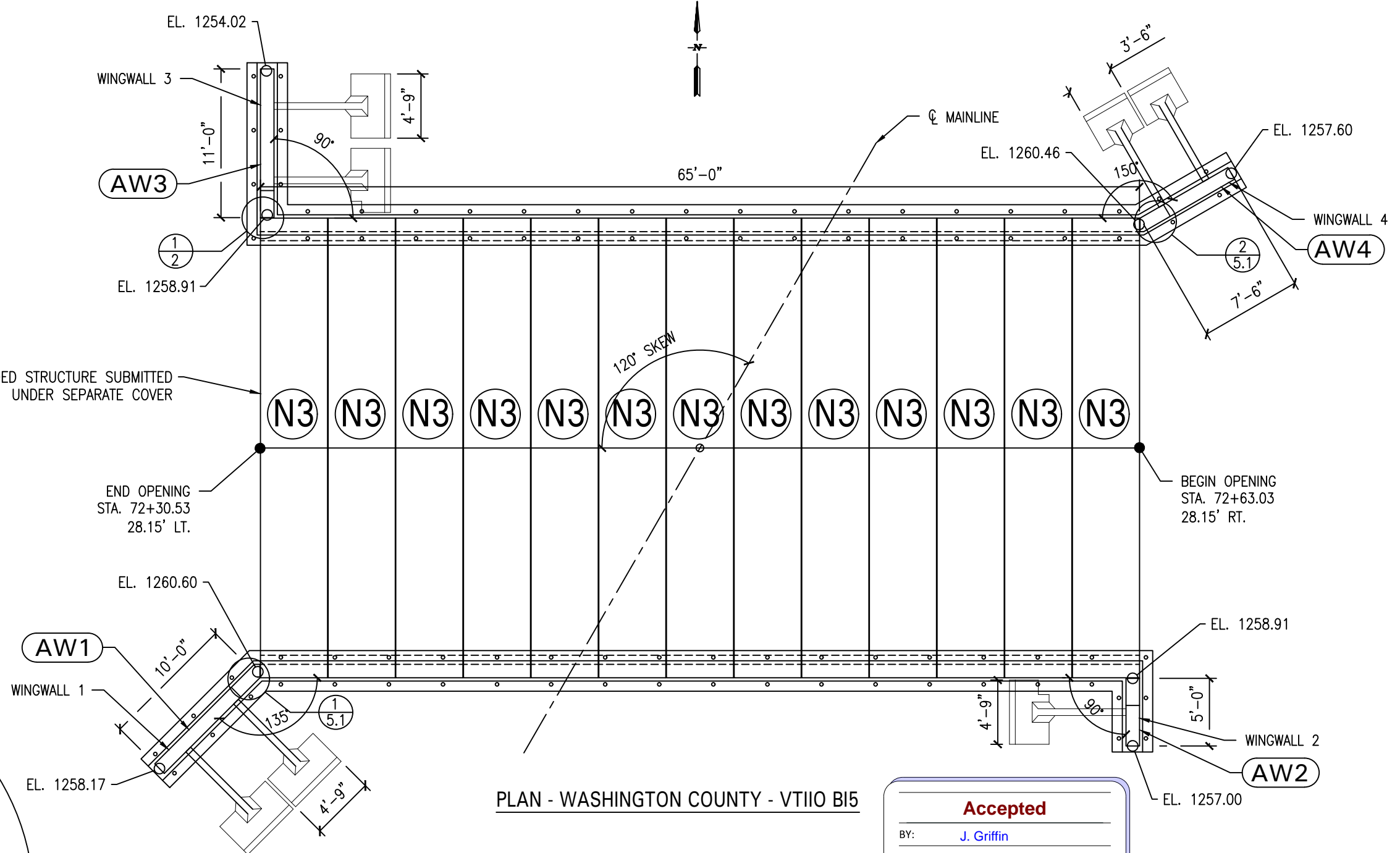
VT 110 B15							
WASHINGTON ANCHOR WALLS							
TOWN OF WASHINGTON, ORANGE COUNTY, VT							
PRODUCTION NOTE SHEET						CONTRACTOR: VAOT - OPERATIONS 1 NATIONAL LIFE DRIVE MONTPELIER VT, 05633	
ENGINEER: VAOT							
DRAWN MAP	DATE 9/12/23	CHK'D MPS	SHEET 1	SCALE NONE	F.M. JOB No. 25105	DWG. S1	

- W1 = EPOXY COATED WOOD FINISH
- FL = FLOAT FINISH
- W2 = COATED WOOD FORM FINISH
- S = STEEL FORM FINISH
- E = EXPOSED AGG. FINISH ALONG WIDTH OF ANCHOR WHERE CONTACTING GROUT.



1
2

3-SIDED STRUCTURE SUBMITTED UNDER SEPARATE COVER



Accepted

BY: J. Griffin
 DATE: 11/21/2023
 RESUBMIT: No
 RECEIVED: November 21, 2023
 CKD BY: A. Lemieux

STATE OF VERMONT
 AGENCY OF TRANSPORTATION



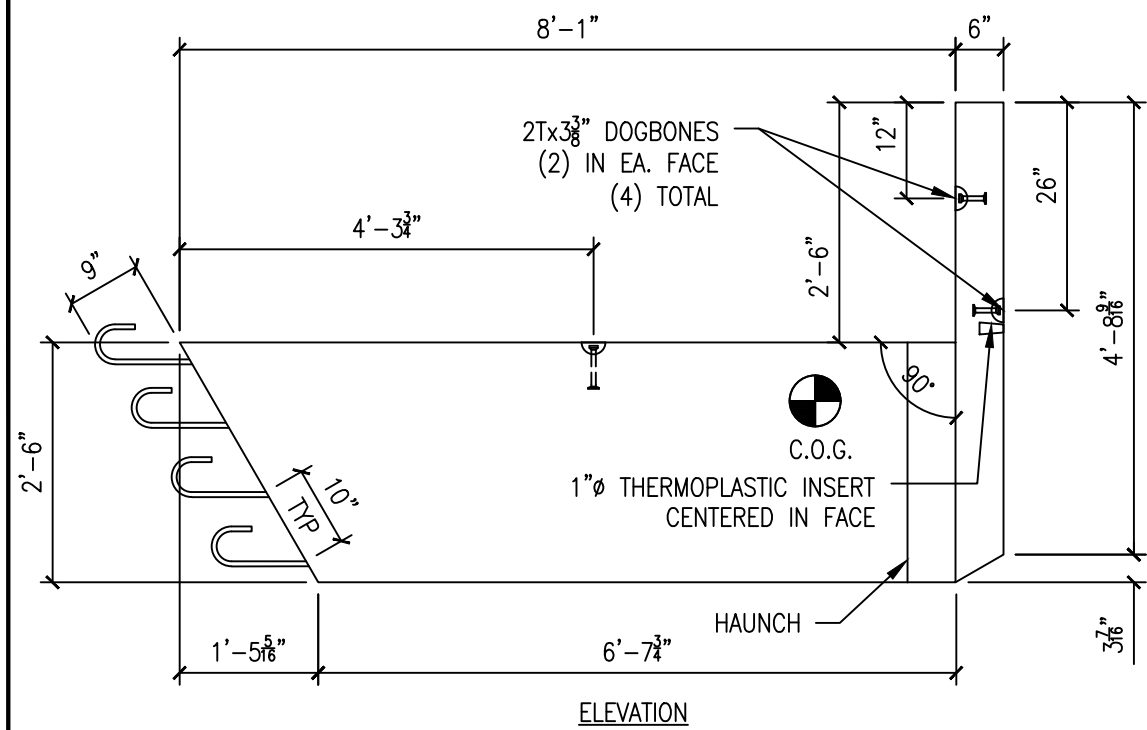
FM

THE FORT MILLER Co., Inc.
 P.O. BOX 98
 SCHUYLERVILLE, NY 12871
 (518) 695-5000
 (518) 695-4970 FAX
 www.fortmiller.com

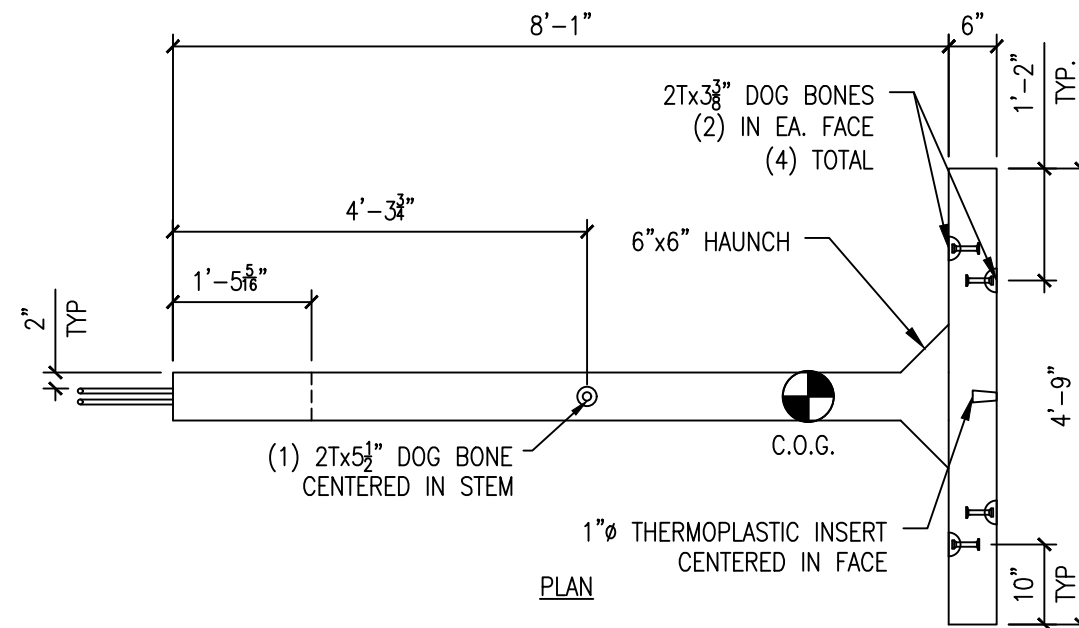
NO.	DATE	BY	DESCRIPTION
1	11/13/23	MAP	EDIT LABELS, MOVE AW3 LIFTERS

VT 110 B15			
WASHINGTON ANCHOR WALLS			
TOWN OF WASHINGTON, ORANGE COUNTY, VT			
WINGWALL LAYOUT & DETAILS		CONTRACTOR: VAOT - OPERATIONS 1 NATIONAL LIFE DRIVE MONTPELIER VT, 05633	
ENGINEER: VAOT		SCALE: NONE	
DRAWN MAP	DATE 9/12/23	CHK'D MPS	SHEET 2
F.M. JOB No. 25105		DWG. S2	

REVISIONS



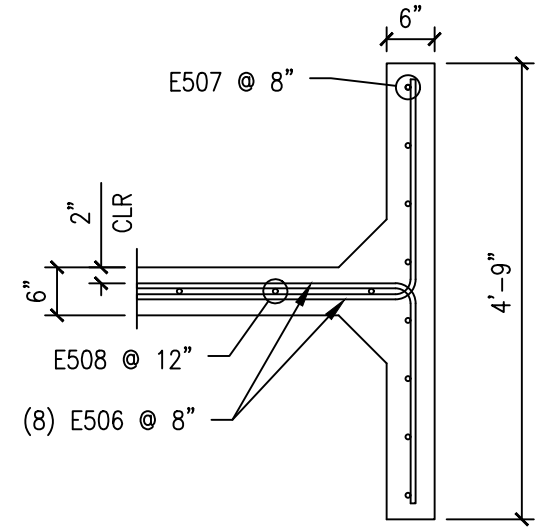
ELEVATION



PLAN

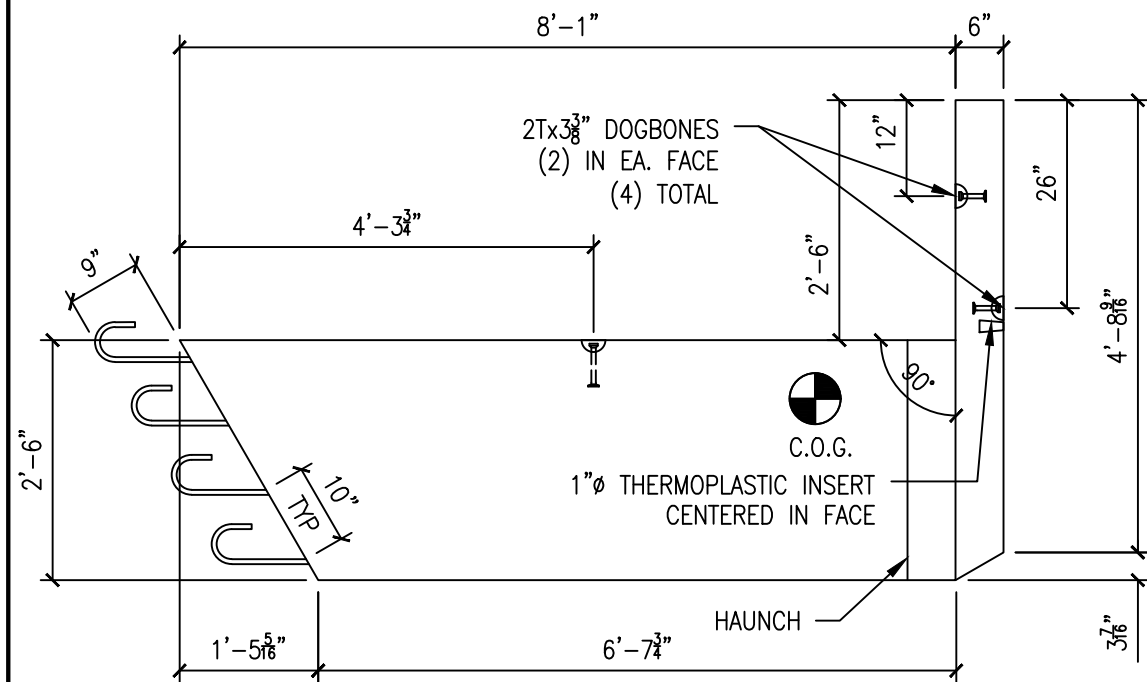
TYPE A ANCHOR DETAIL (QTY = 3)

VOL = 0.79 CY
WT = 1.60 T

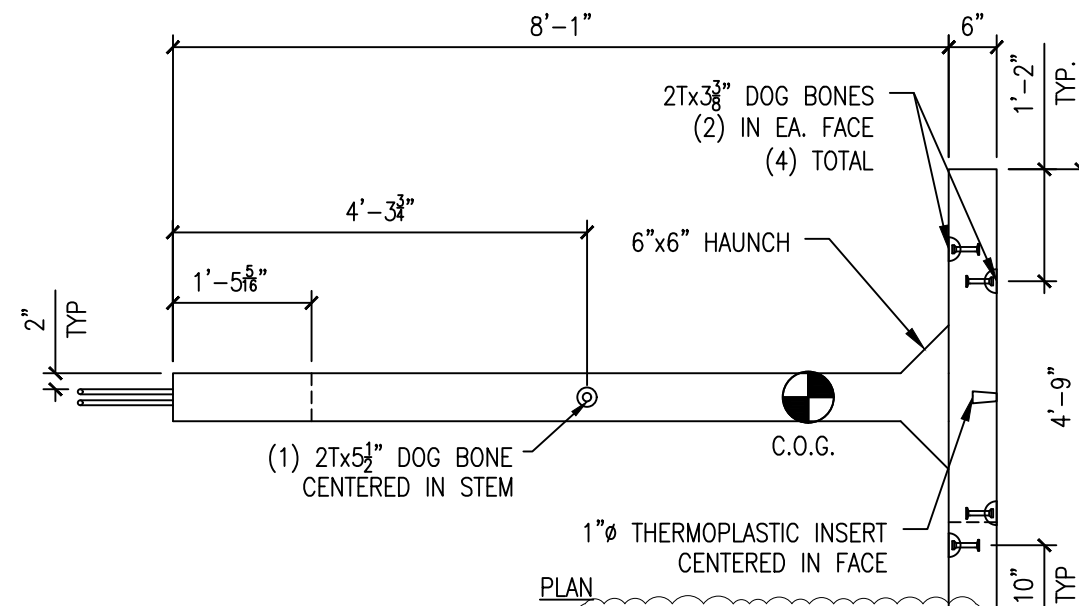


PLAN - ANCHOR REINFORCEMENT

TYPE A ANCHOR



ELEVATION

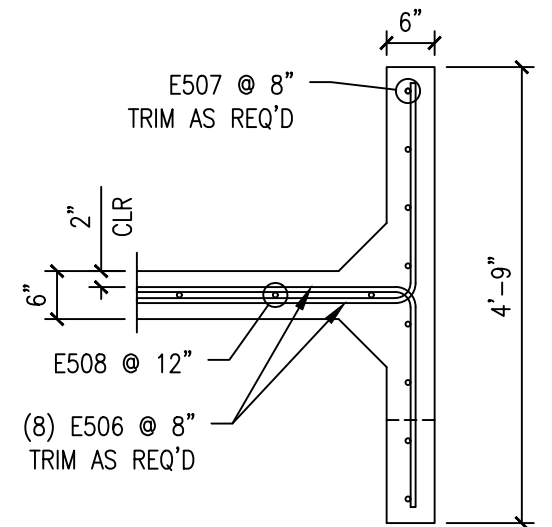


PLAN

TYPE B ANCHOR DETAIL (QTY = 2)

VOL = 0.76 CY
WT = 1.56 T

SEE BLOCKOUT DETAIL ON SHEET 3.1



PLAN - ANCHOR REINFORCEMENT

TYPE B ANCHOR

Accepted

BY: J. Griffin
DATE: 11/21/2023
RESUBMIT: No
RECEIVED: November 21, 2023
CKD BY: A. Lemieux

STATE OF VERMONT
AGENCY OF TRANSPORTATION



F.M.

THE FORT MILLER Co., Inc.
P.O. BOX 98
SCHUYLERVILLE, NY 12871
(518) 695-5000
(518) 695-4970 FAX
www.fortmiller.com

NO.	DATE	BY	DESCRIPTION
1	11/13/23	MAP	EDIT LABELS, MOVE AW3 LIFTERS

REVISIONS

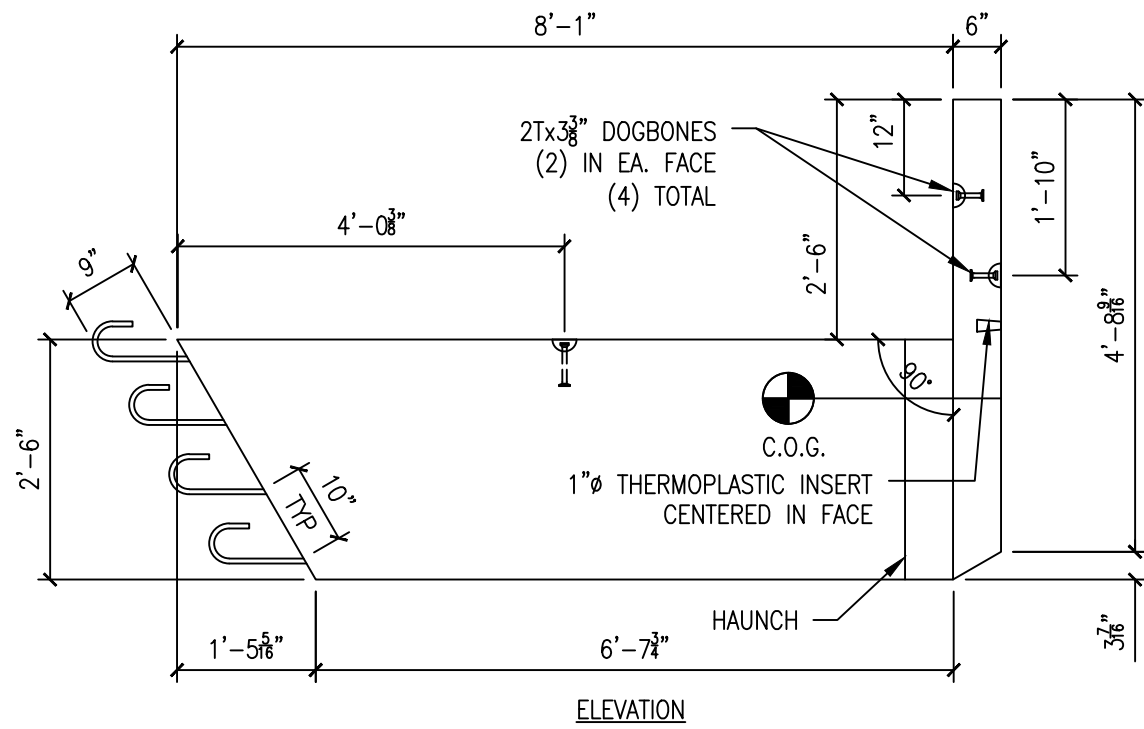
VT 110 B15
WASHINGTON ANCHOR WALLS
TOWN OF WASHINGTON, ORANGE COUNTY, VT

ANCHOR A & B DETAILS

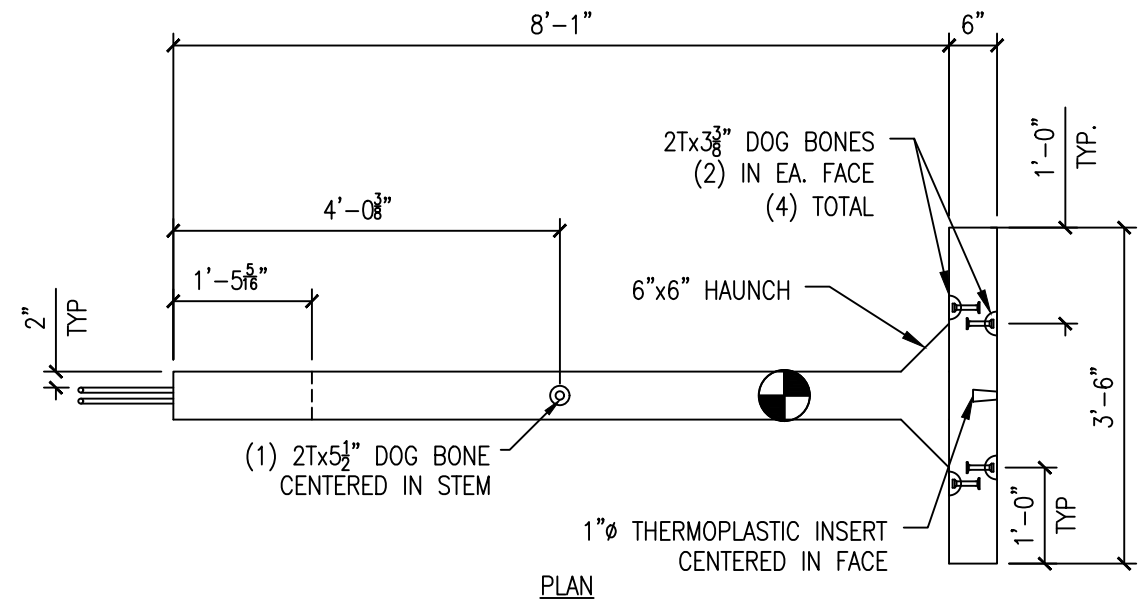
CONTRACTOR:
VAOT - OPERATIONS
1 NATIONAL LIFE DRIVE
MONTPELIER, VT, 05633

ENGINEER:
VAOT

DRAWN	DATE	CHK'D	SHEET	SCALE	F.M. JOB No.	DWG.
MAP	9/12/23	MPS	3	NONE	25105	S3



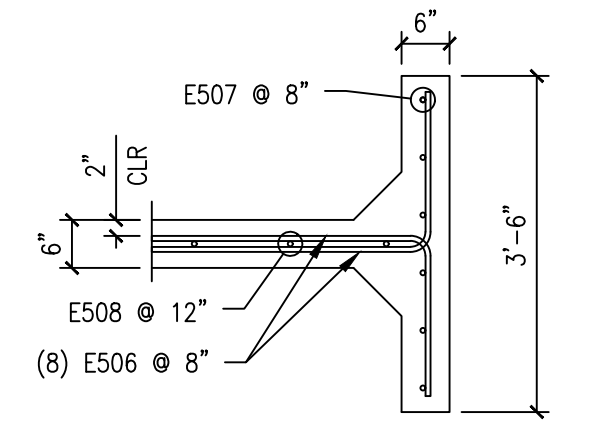
ELEVATION



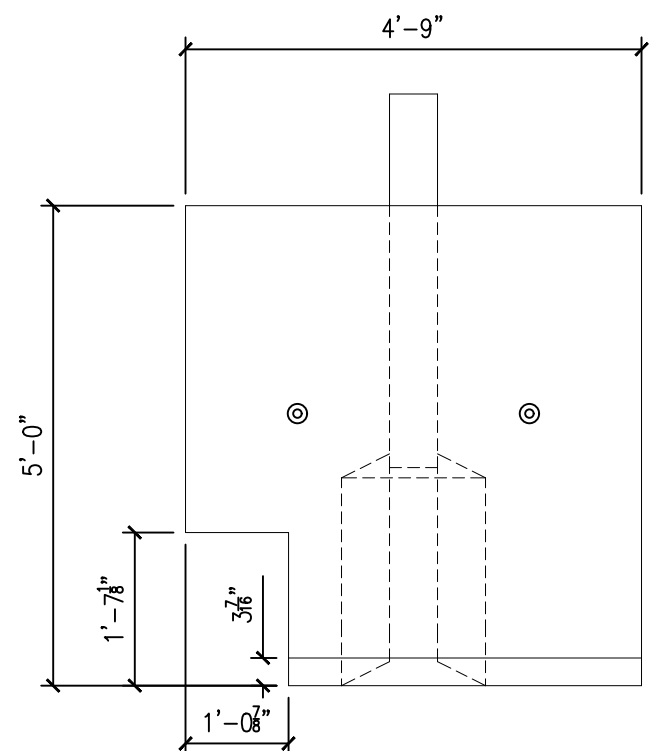
PLAN

TYPE C ANCHOR DETAIL (QTY = 2)

VOL = 0.68 CY
WT = 1.38 T



PLAN - ANCHOR REINFORCEMENT
TYPE C ANCHOR



SECTION A - BLOCKOUT DETAIL
ANCHOR B

A
3.1

Accepted

BY: J. Griffin
DATE: 11/21/2023
RESUBMIT: No
RECEIVED: November 21, 2023
CKD BY: A. Lemieux

**STATE OF VERMONT
AGENCY OF TRANSPORTATION**

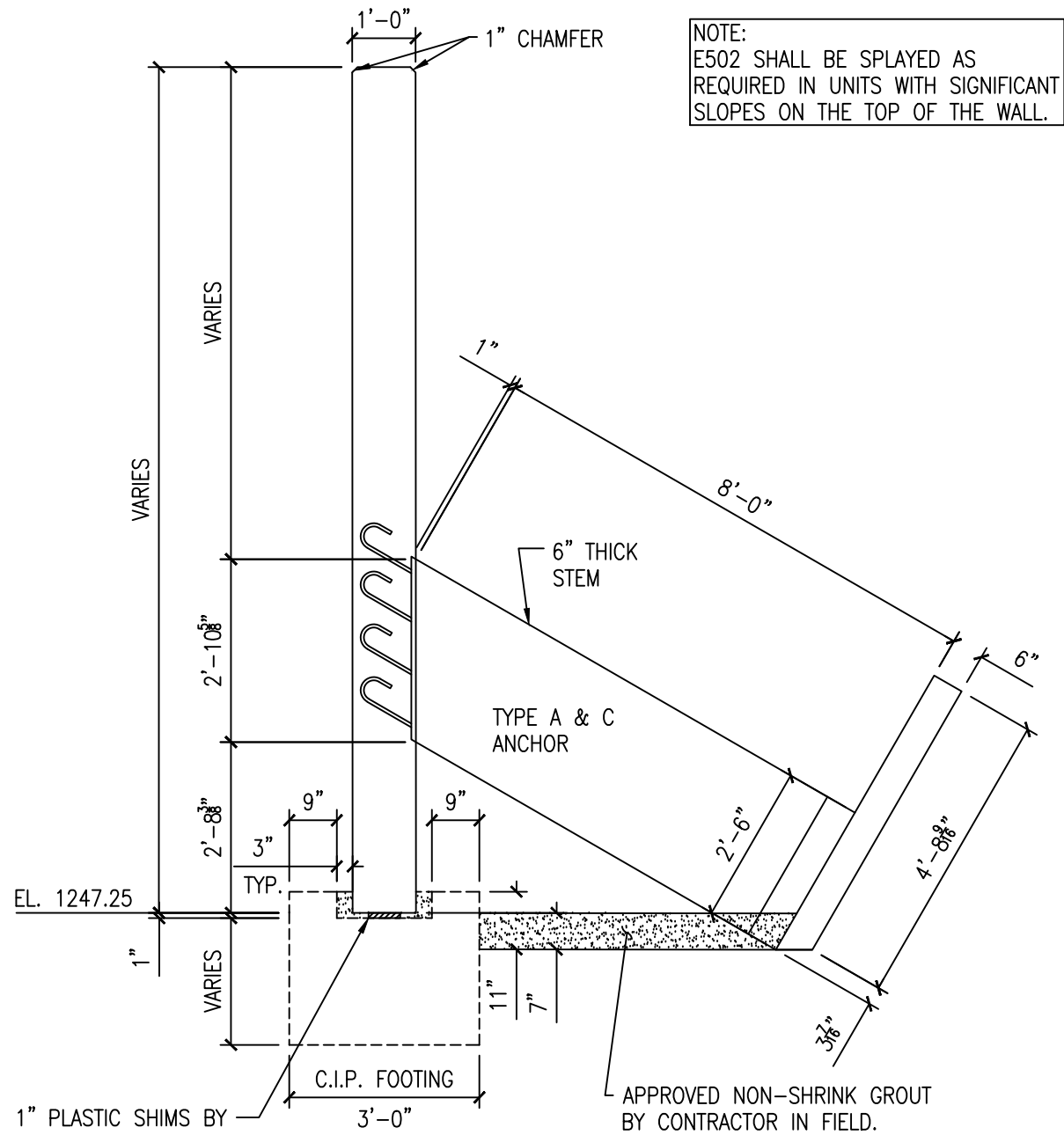


F.M.
THE FORT MILLER Co., Inc.
P.O. BOX 98
SCHUYLERVILLE, NY 12871
(518) 695-5000
(518) 695-4970 FAX
www.fortmiller.com

NO.	DATE	BY	DESCRIPTION
1	11/13/23	MAP	EDIT LABELS, MOVE AW3 LIFTERS

REVISIONS

VT 110 B15 WASHINGTON ANCHOR WALLS						
TOWN OF WASHINGTON, ORANGE COUNTY, VT						
ANCHOR C DETAILS				CONTRACTOR: VAOT - OPERATIONS 1 NATIONAL LIFE DRIVE MONTPELIER VT, 05633		
ENGINEER: VAOT				SCALE	F.M. JOB No.	DWG.
DRAWN MAP	DATE 9/12/23	CHK'D MPS	SHEET 3.1	NONE	25105	S3.1

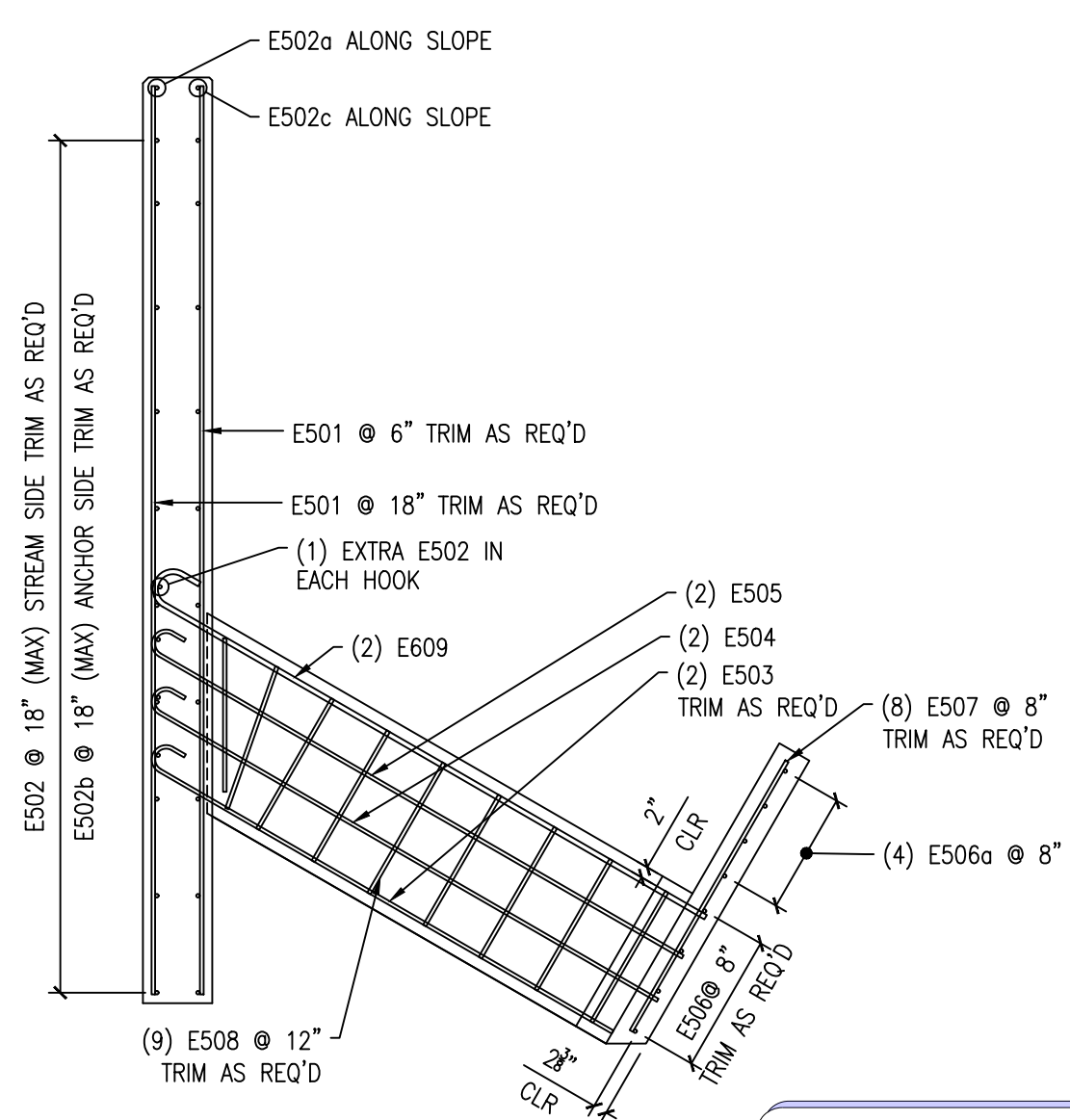


1" PLASTIC SHIMS BY CONTRACTOR, MIN. OF (2) LOCATIONS

SECTION A - ANCHOR WALL
WINGWALLS AW1 & AW4

TYPE C - REINFORCING SCHEDULE							
Bar Mk	Qty	Size	Shape	Length	A	B	J
E503	2	5	1	8'-4"	0'-7"	7'-9"	0'-5"
E504	2	5	1	9'-1"	0'-7"	8'-6"	0'-5"
E505	2	5	1	9'-6"	0'-7"	8'-11"	0'-5"
E506	8	5	2	4'-8"	1'-8"	3'-0"	
E506a	4	5	STR	3'-2"	3'-2"		
E507	6	5	STR	4'-6"	4'-6"		
E508	9	5	STR	2'-2"	2'-2"		
E609	2	6	1	9'-10 3/4"	0'-7"	9'-3 3/4"	0'-5"

NOTE: SEE SHEET 5 FOR STEM REINFORCEMENT SCHEDULES.



SECTION A - REINFORCEMENT
WINGWALLS AW1 & AW4
2" CLEAR U.N.O.

Accepted

BY: J. Griffin
 DATE: 11/21/2023
 RESUBMIT: No
 RECEIVED: November 21, 2023
 CKD BY: A. Lemieux

STATE OF VERMONT
AGENCY OF TRANSPORTATION



THE FORT MILLER Co., Inc.
 P.O. BOX 98
 SCHUYLERVILLE, NY 12871
 (518) 695-5000
 (518) 695-4970 FAX
 www.fortmiller.com

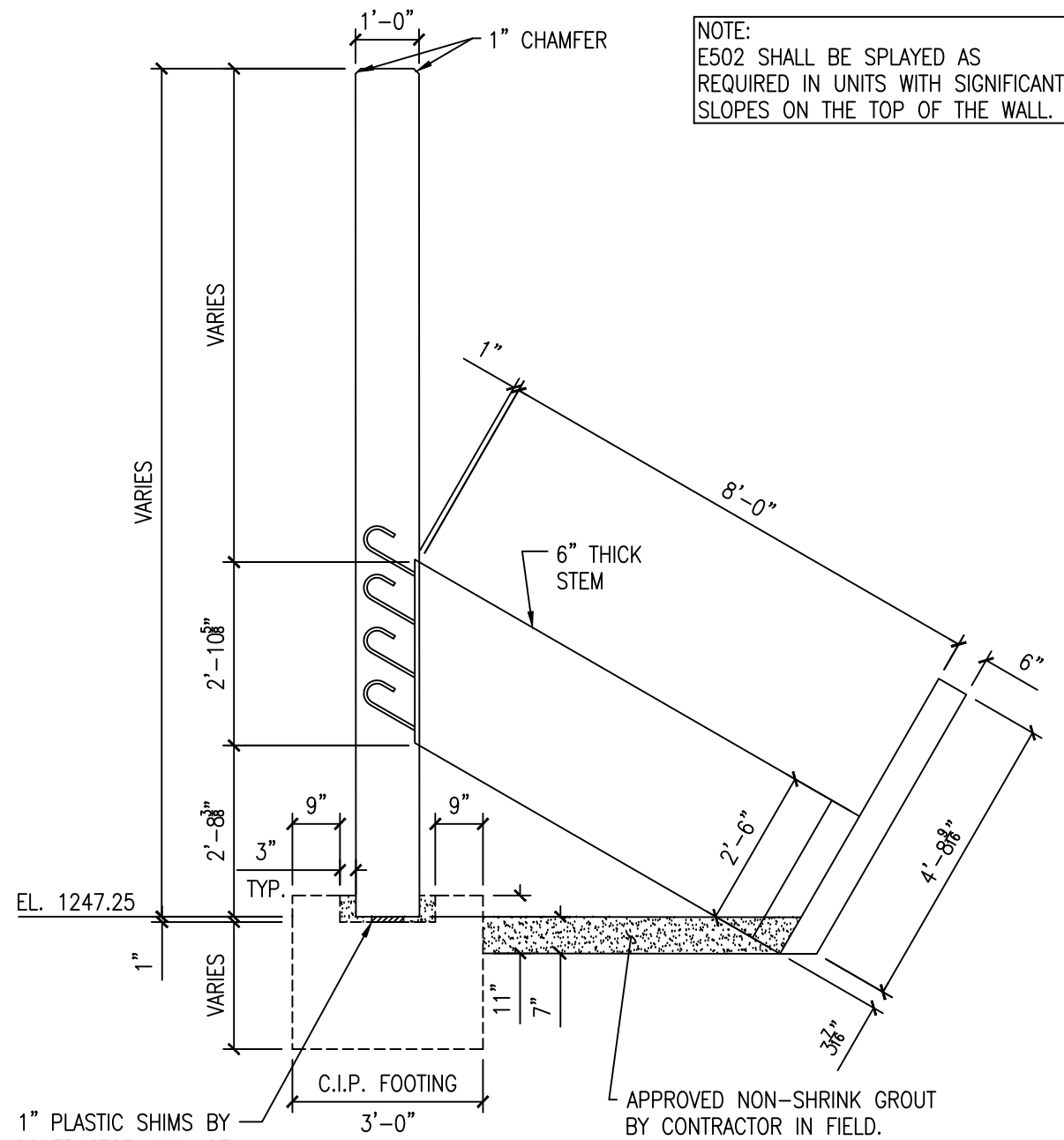
NO.	DATE	BY	DESCRIPTION
1	11/13/23	MAP	EDIT LABELS, MOVE AW3 LIFTERS

REVISIONS

**VT 110 B15
WASHINGTON ANCHOR WALLS**

TOWN OF WASHINGTON, ORANGE COUNTY, VT

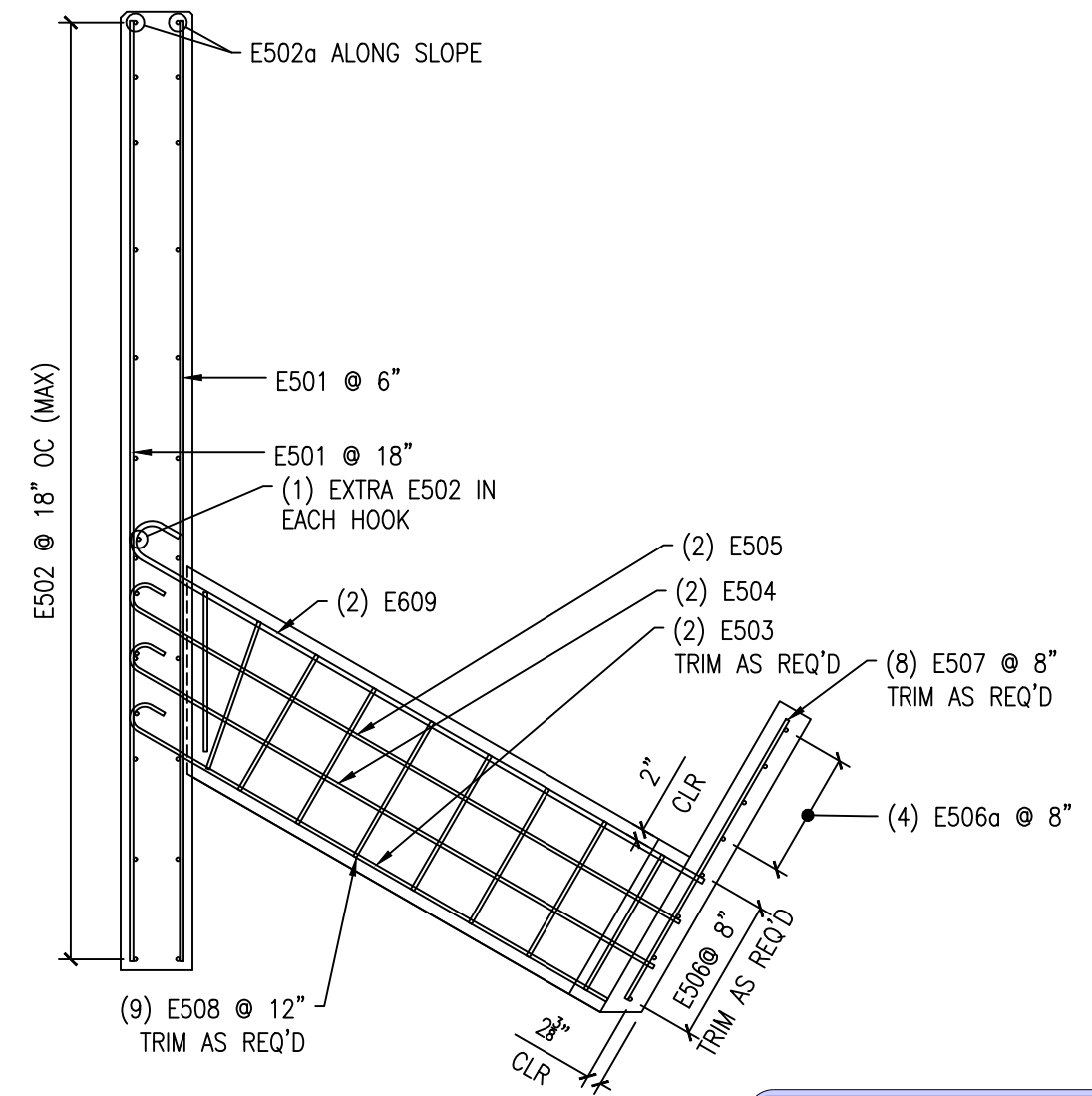
REINFORCEMENT DETAILS				CONTRACTOR: VAOT - OPERATIONS 1 NATIONAL LIFE DRIVE MONTPELIER VT, 05633		
ENGINEER: VAOT				SCALE NONE		
DRAWN MAP	DATE 9/12/23	CHK'D MPS	SHEET 4	F.M. JOB No. 25105	DWG. S4	



SECTION A - ANCHOR WALL A.4.1
WINGWALLS AW2 & AW3

TYPE A & B ANCHOR - REINFORCING SCHEDULE							
Bar Mk	Qty	Size	Shape	Length	A	B	J
E503	2	5	1	8'-4"	0'-7"	7'-9"	0'-5"
E504	2	5	1	9'-1"	0'-7"	8'-6"	0'-5"
E505	2	5	1	9'-6"	0'-7"	8'-11"	0'-5"
E506	8	5	2	5'-3 1/2"	2'-3 1/2"	3'-0"	
E506a	4	5	STR	4'-5"	4'-5"		
E507	8	5	STR	4'-6"	4'-6"		
E508	9	5	STR	2'-2"	2'-2"		
E609	2	6	1	9'-10 3/4"	0'-7"	9'-3 3/4"	0'-5"

NOTE: SEE SHEET 5 FOR STEM REINFORCEMENT SCHEDULES.

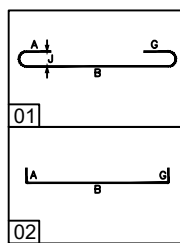


SECTION A - REINFORCEMENT
WINGWALLS AW2 & AW3
2" CLEAR U.N.O.

Accepted

BY: J. Griffin
 DATE: 11/21/2023
 RESUBMIT: No
 RECEIVED: November 21, 2023
 CKD BY: A. Lemieux

STATE OF VERMONT
AGENCY OF TRANSPORTATION



FM
 THE FORT MILLER Co., Inc.
 P.O. BOX 98
 SCHUYLERVILLE, NY 12871
 (518) 695-5000
 (518) 695-4970 FAX
 www.fortmiller.com

NO.	DATE	BY	DESCRIPTION
1	11/13/23	MAP	EDIT LABELS, MOVE AW3 LIFTERS

REVISIONS

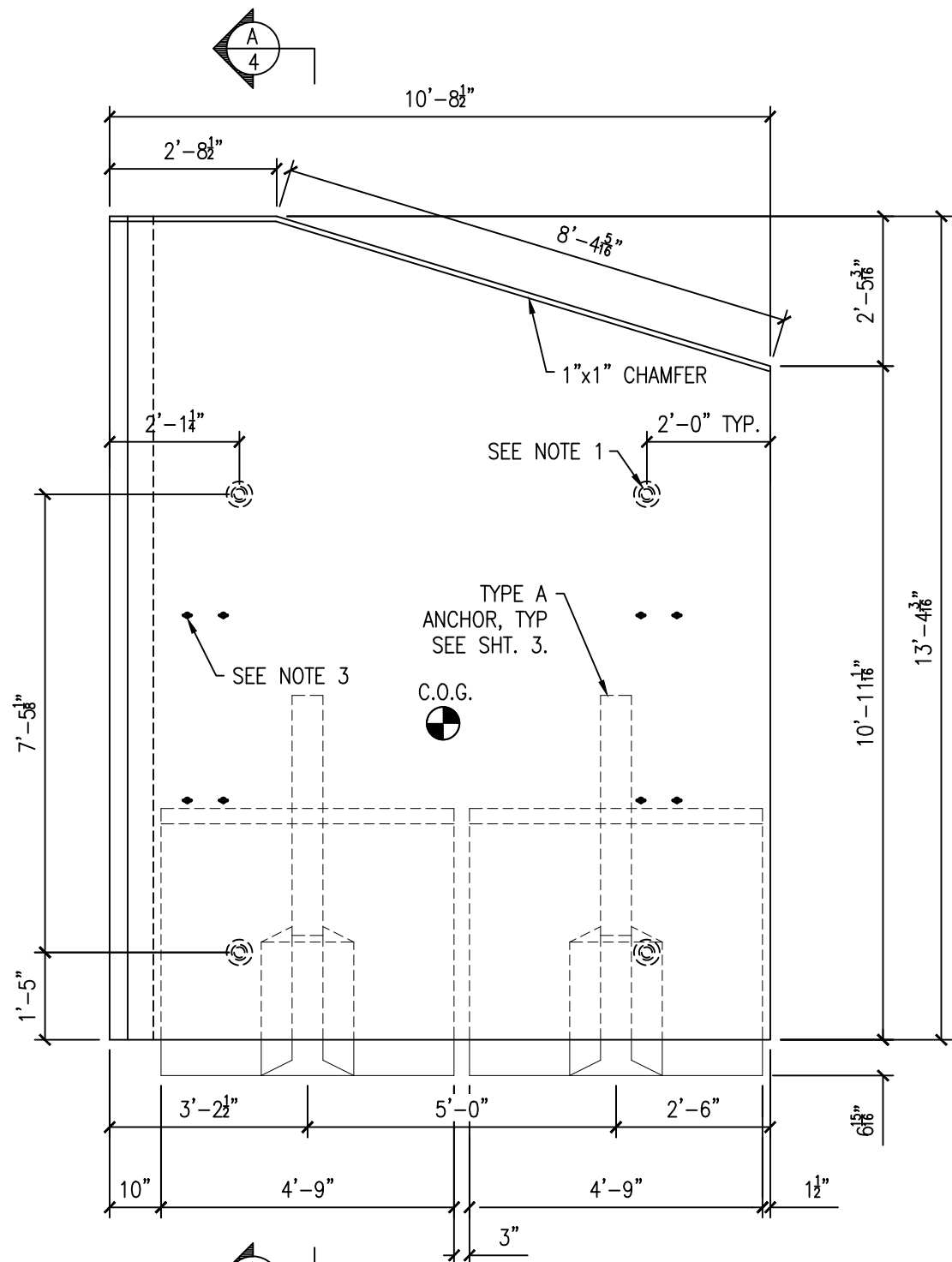
VT 110 B15
WASHINGTON ANCHOR WALLS
TOWN OF WASHINGTON, ORANGE COUNTY, VT

REINFORCEMENT DETAILS (CONT'D)

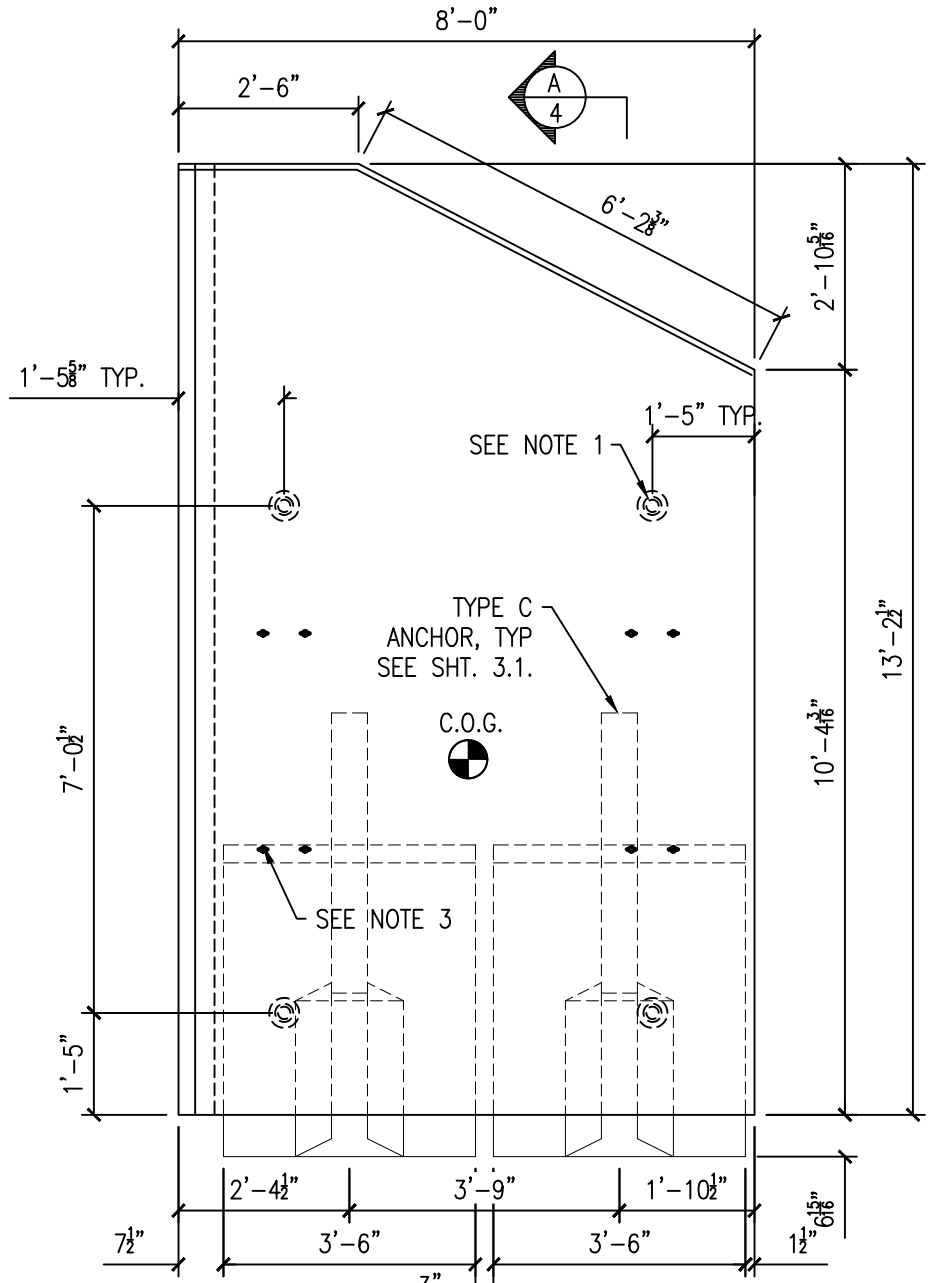
CONTRACTOR: VAOT - OPERATIONS
 1 NATIONAL LIFE DRIVE
 MONTPELIER VT, 05633

ENGINEER: VAOT

DRAWN MAP	DATE 9/12/23	CHK'D MPS	SHEET 4.1	SCALE NONE	F.M. JOB No. 25105	DWG. S4.1
-----------	--------------	-----------	-----------	------------	--------------------	-----------

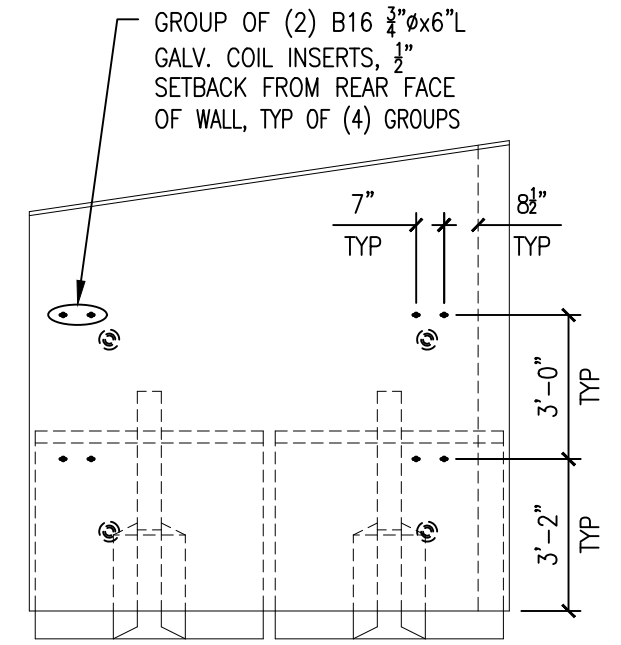


ELEVATION - AW1
(FRONT FACE SHOWN)



ELEVATION - AW4
(FRONT FACE SHOWN)

FMC PRODUCTION SHALL HAVE THE OPTION TO ADD COIL INSERTS AND/OR ADDITIONAL HANDLING INSERTS AS REQUIRED FOR MEANS AND METHODS OF SUPPORTING ANCHORS OVER SECONDARY POUR WALL PORTION (FLAT IN FORM). THESE SHALL BE PATCHED PRIOR TO SHIPPING UNITS.



TYPICAL INSERT LAYOUT

AW1 STEM - REINFORCING SCHEDULE									
Bar Mk	Qty	Size	Shape	Length	A	C	D	H	K
E501	30	5	STR	13'-0 1/4"	13'-0 1/4"				
E502	13	5	STR	10'-2"	10'-2"				
E502a	1	5	6	10'-7 1/4"		2'-4 1/4"	8'-3"	0'-8 3/4"	2'-3"
E502b	9	5	STR	9'-8 3/4"	9'-8 3/4"				
E502c	1	5	6	10'-2"		1'-11"	8'-3"	0'-7 7/4"	1'-10"

AW4 STEM - REINFORCING SCHEDULE									
Bar Mk	Qty	Size	Shape	Length	A	C	D	H	K
E501	24	5	STR	12'-10 1/2"	12'-10 1/2"				
E502	13	5	STR	7'-6 1/4"	7'-6 1/4"				
E502a	1	5	6	8'-3 1/2"		2'-1 1/2"	6'-2"	1'-0 1/4"	1'-10 3/4"
E502b	9	5	STR	7'-2 3/4"	7'-2 3/4"				
E502c	1	5	6	8'-0"		1'-10"	6'-2"	0'-10 3/4"	1'-7 1/4"

Accepted
 BY: J. Griffin
 DATE: 11/21/2023
 RESUBMIT: No
 RECEIVED: November 21, 2023
 CKD BY: A. Lemieux
 STATE OF VERMONT
 AGENCY OF TRANSPORTATION

- NOTES:**
- (4) HDG 8x10" DOGBONE ANCHORS FOR HANDLING.
 - SEE SHEETS 4 & 4.1 FOR CROSS SECTIONS AND REINFORCEMENT.
 - SEE 'TYPICAL INSERT LOCATION' DETAIL FOR B-16 COIL INSERT LOCATIONS.



FM
 THE FORT MILLER Co., Inc.
 P.O. BOX 98
 SCHUYLERVILLE, NY 12871
 (518) 695-5000
 (518) 695-4970 FAX
 www.fortmiller.com

NO.	DATE	BY	DESCRIPTION
1	11/13/23	MAP	EDIT LABELS, MOVE AW3 LIFTERS

REVISIONS

VT 110 B15
WASHINGTON ANCHOR WALLS

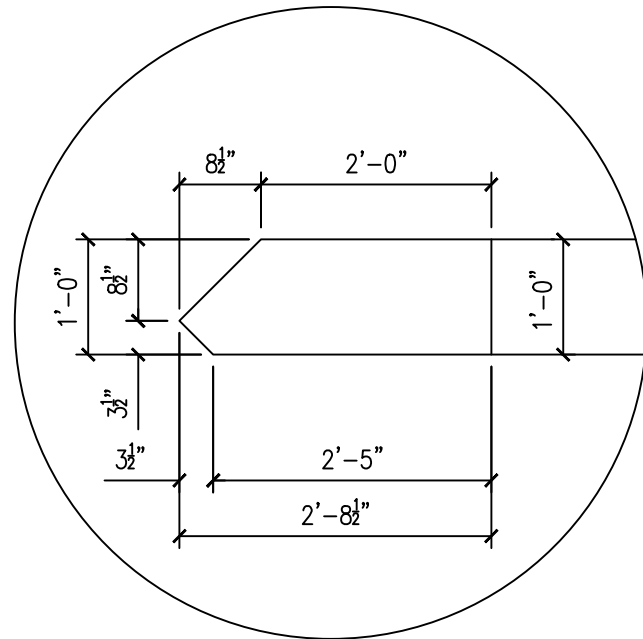
TOWN OF WASHINGTON, ORANGE COUNTY, VT

WINGWALL 1 & 4 DETAILS

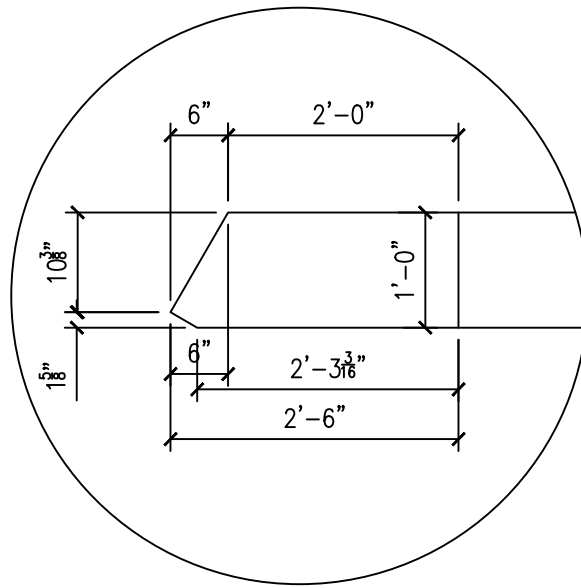
CONTRACTOR:
 VAOT - OPERATIONS
 1 NATIONAL LIFE DRIVE
 MONTPELIER VT, 05633

ENGINEER:
 VAOT

DRAWN MAP	DATE 9/12/23	CHK'D MPS	SHEET 5	SCALE NONE	F.M. JOB No. 25105	DWG. S5
--------------	-----------------	--------------	------------	---------------	-----------------------	------------



AW1 DETAIL 1
5.1



AW4 DETAIL 2
5.1

Accepted

BY: J. Griffin

DATE: 11/21/2023

RESUBMIT: No

RECEIVED: November 21, 2023

CKD BY: A. Lemieux

STATE OF VERMONT
AGENCY OF TRANSPORTATION

2010 - CIVIL - VAOT - 11-15-23.dwg



FM

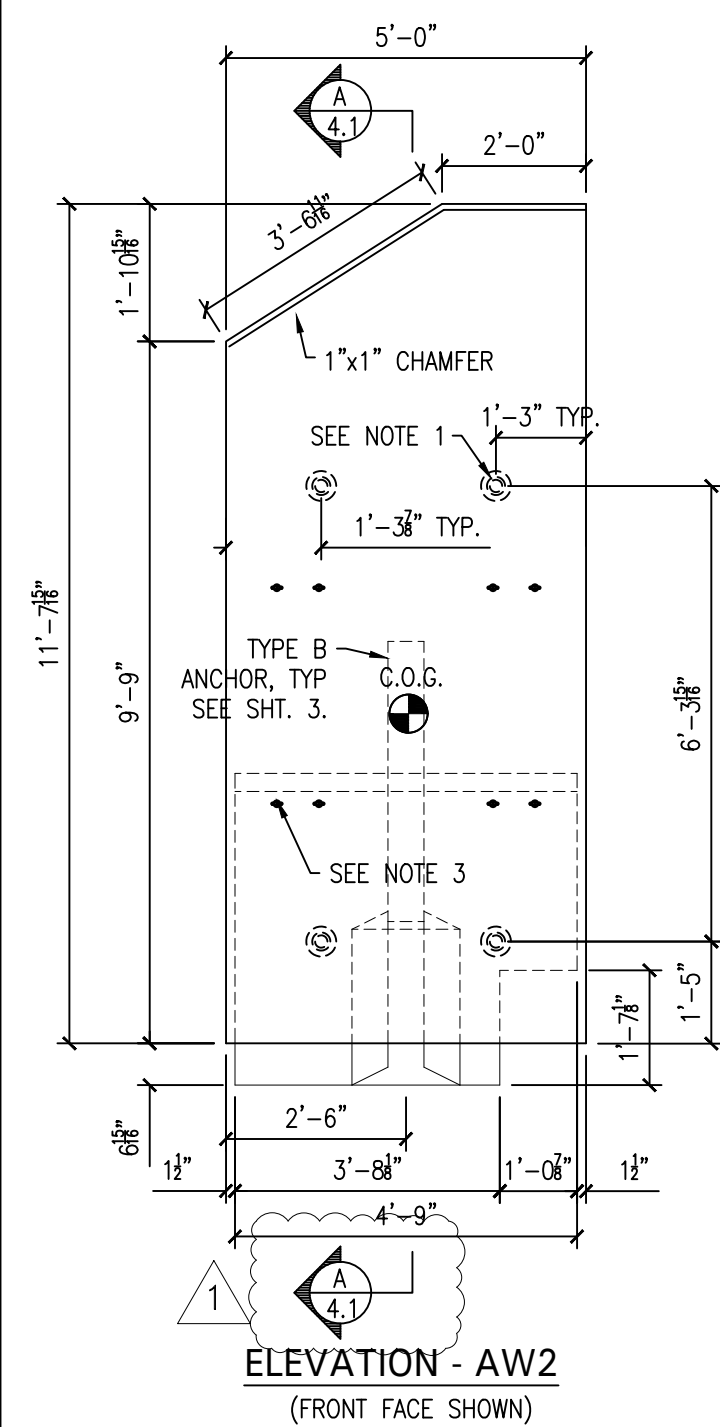
THE FORT MILLER Co., Inc.
P.O. BOX 98
SCHUYLERVILLE, NY 12871
(518) 695-5000
(518) 695-4970 FAX
www.fortmiller.com

NO.	DATE	BY	DESCRIPTION
1	11/13/23	MAP	EDIT LABELS, MOVE AW3 LIFTERS

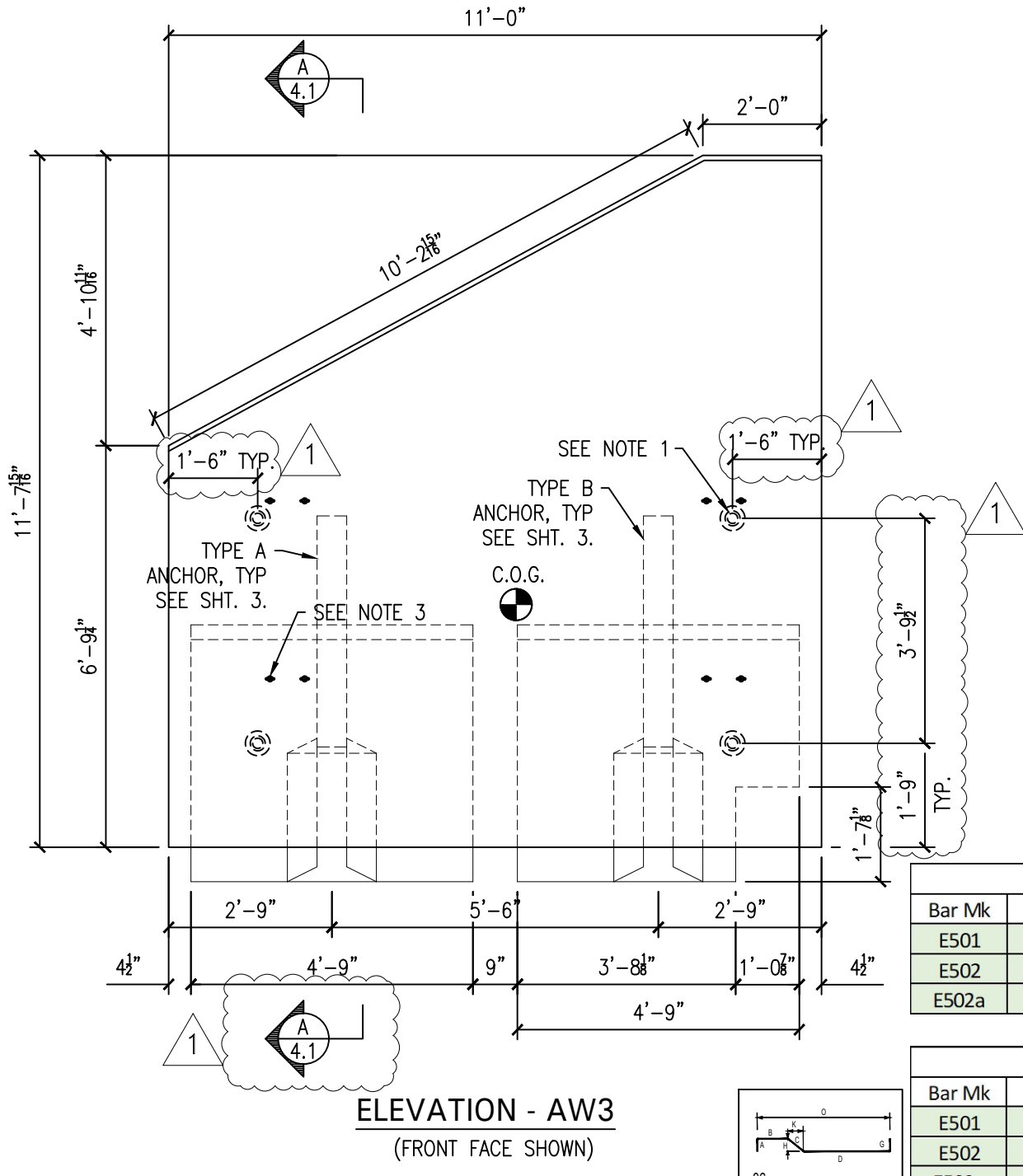
VT 110 B15 WASHINGTON ANCHOR WALLS TOWN OF WASHINGTON, ORANGE COUNTY, VT						
WINGWALL 1 & 4 DETAILS (CONT'D)					CONTRACTOR: VAOT - OPERATIONS 1 NATIONAL LIFE DRIVE MONTPELIER VT, 05633	
ENGINEER: VAOT					DRAWN MAP	DATE 9/12/23
SCALE NONE		CHK'D MPS	SHEET 5.1	F.M. JOB No. 25105	DWG. S5.1	

REVISIONS

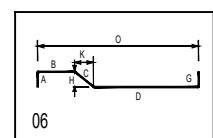
FMC PRODUCTION SHALL HAVE THE OPTION TO ADD COIL INSERTS AND/OR ADDITIONAL HANDLING INSERTS AS REQUIRED FOR MEANS AND METHODS OF SUPPORTING ANCHORS OVER SECONDARY POUR WALL PORTION (FLAT IN FORM). THESE SHALL BE PATCHED PRIOR TO SHIPPING UNITS.



ELEVATION - AW2
(FRONT FACE SHOWN)



ELEVATION - AW3
(FRONT FACE SHOWN)



AW2 STEM - REINFORCING SCHEDULE									
Bar Mk	Qty	Size	Shape	Length	A	C	D	H	K
E501	16	5	STR	11'-4"	11'-4"				
E502	20	5	STR	4'-8"	4'-8"				
E502a	2	5	6	5'-3 1/4"		1'-10"	3'-5 1/2"	1'-0 1/4"	1'-6 3/4"

AW3 STEM - REINFORCING SCHEDULE									
Bar Mk	Qty	Size	Shape	Length	A	C	D	H	K
E501	32	5	STR	11'-4"	11'-4"				
E502	20	5	STR	10'-8"	10'-8"				
E502a	2	5	6	11'-11 1/2"		1'-10"	10'-1 3/4"	0'-11"	1'-7 1/2"

Accepted

BY: J. Griffin
 DATE: 11/21/2023
 RESUBMIT: No
 RECEIVED: November 21, 2023
 CKD BY: A. Lemieux

**STATE OF VERMONT
AGENCY OF TRANSPORTATION**

NOTES:

- (4) HDG 8T x 10" DOGBONE ANCHORS FOR HANDLING.
- SEE SHEETS 4 & 4.1 FOR CROSS SECTIONS AND REINFORCEMENT.
- SEE SHEET 5 FOR B-16 COIL INSERT LOCATIONS.



F M
 THE FORT MILLER Co., Inc.
 P.O. BOX 98
 SCHUYLERVILLE, NY 12871
 (518) 695-5000
 (518) 695-4970 FAX
 www.fortmiller.com

NO.	DATE	BY	DESCRIPTION
1	11/13/23	MAP	EDIT LABELS, MOVE AW3 LIFTERS

REVISIONS

**VT 110 B15
WASHINGTON ANCHOR WALLS**

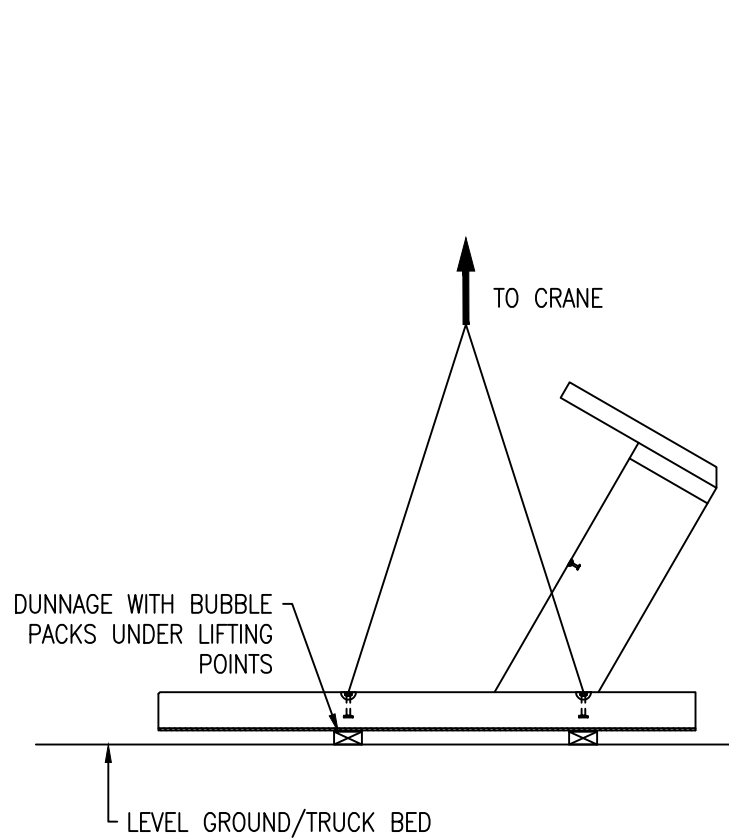
TOWN OF WASHINGTON, ORANGE COUNTY, VT

WINGWALL 2 & 3 DETAILS

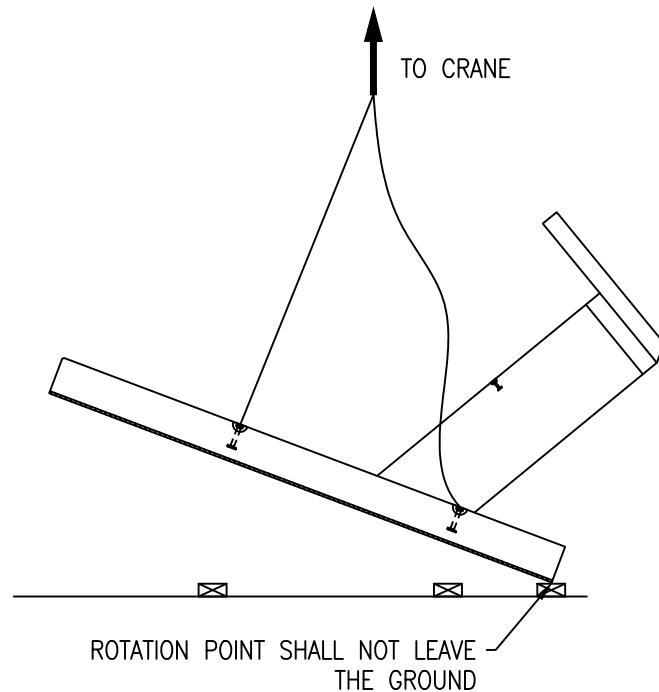
CONTRACTOR:
VAOT - OPERATIONS
1 NATIONAL LIFE DRIVE
MONTPELIER VT, 05633

ENGINEER:
VAOT

DRAWN MAP	DATE 9/12/23	CHK'D MPS	SHEET 6	SCALE NONE	F.M. JOB No. 25105	DWG. S6
--------------	-----------------	--------------	------------	---------------	-----------------------	------------



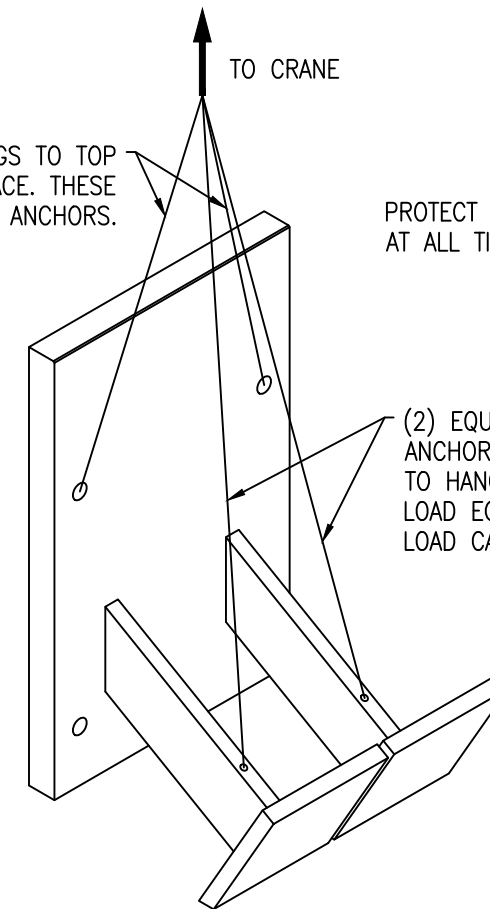
YARD STORAGE, LOADING, UNLOADING



ROTATING

(2) EQUAL LENGTH SLINGS TO TOP ANCHORS IN BACKFILL FACE. THESE ARE MAIN LOAD CARRYING ANCHORS.

PROTECT CONCRETE FROM SPALLING AT ALL TIMES.



FIELD SETTING

Accepted

BY: J. Griffin

DATE: 11/21/2023

RESUBMIT: No

RECEIVED: November 21, 2023

CKD BY: A. Lemieux

**STATE OF VERMONT
AGENCY OF TRANSPORTATION**

25105 - GFA - 1407 - 11-15-23.pdf



F.M.

THE FORT MILLER Co., Inc.
P.O. BOX 98
SCHUYLERVILLE, NY 12871
(518) 695-5000
(518) 695-4970 FAX
www.fortmiller.com

NO.	DATE	BY	DESCRIPTION
1	11/13/23	MAP	EDIT LABELS, MOVE AW3 LIFTERS

REVISIONS

**VT 110 B15
WASHINGTON ANCHOR WALLS**

TOWN OF WASHINGTON, ORANGE COUNTY, VT

WINGWALL HANDLING DETAILS				CONTRACTOR: VAOT - OPERATIONS 1 NATIONAL LIFE DRIVE MONTPELIER VT, 05633		
ENGINEER: VAOT				SCALE	F.M. JOB No.	DWG.
DRAWN MAP	DATE 9/12/23	CHK'D MPS	SHEET 7	NONE	25105	S7