

**MANHOLE**  
 RIVER CROSSING MANHOLE,  
 SEE SHEET 21 OF 23  
 FOR DETAIL.

**REMOVE EXPOSED PIPE**  
 CONTRACTOR TO INSTALL 10" CAPS, MJ W/ RG AS REQUIRED TO REMOVE  
 EXPOSED PIPE AND ABANDON EXISTING SYSTEM ONLY AFTER  
 NEW MAIN HAS BEEN DISINFECTED, TESTED, AND APPROVED BY THE ENGINEER.

**INTERCONNECTION**  
 10" TAPPING SLEEVE AND VALVE, MJ W/ BOV.  
 10" NIPPLE, VARIABLE LENGTH  
 MANUAL AIR RELEASE / CHLORINE INJECTION POINT  
 12" x 10" REDUCER, MJ W/ RG  
 12" NIPPLE, VARIABLE LENGTH  
 12" - 1/16 BEND, MJ W/ RG, ROTATE AS REQUIRED.

**STONE FILL**  
 CONTRACTOR TO PLACE TYPE II  
 STONE FILL, AS REQUIRED, ON  
 ALL DISTURBED AREAS. (TYP OF  
 BOTH BANKS)

**CONNECTION**  
 12" x 12" TEE, MJ W/ RG  
 NIPPLE, VARIABLE LENGTH  
 MANUAL AIR RELEASE  
 CHLORINE INJECTION POINT  
 12" - 1/16 BEND, MJ W/ RG  
 ROTATE AS REQUIRED.

SEE SHEET 5 OF 23 FOR STOWE STREET  
 AND LINCOLN STREET PROPOSED  
 WATER MAIN LAYOUT.

**BENDS**  
 (2) 12" - 1/16 BENDS, MJ W/ RG  
 ROTATE AS REQUIRED.

**LEDGE REMOVAL**  
 CONTRACTOR TO REMOVE LEDGE  
 AND ENCASE 12" DI CLASS 52, MJ  
 PIPE W/ CONCRETE. SEE SECTION A-A  
 DETAIL THIS SHEET FOR DETAIL.

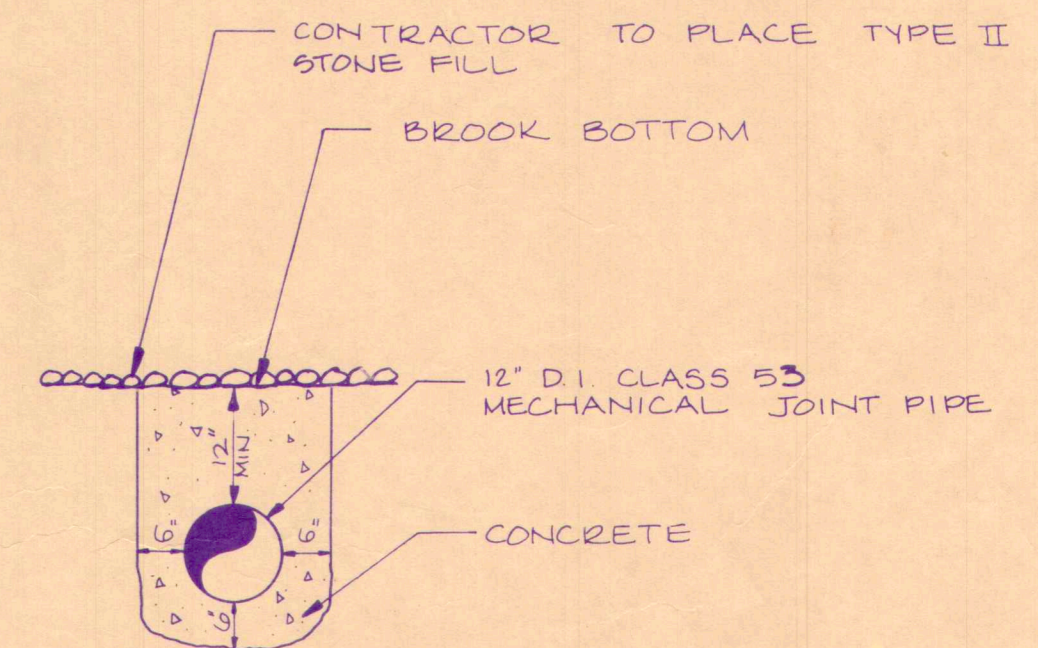
**BENDS**  
 (3) 12" - 1/16 BENDS, MJ W/ RG  
 ROTATE AS REQUIRED.

12" DI. CLASS 52

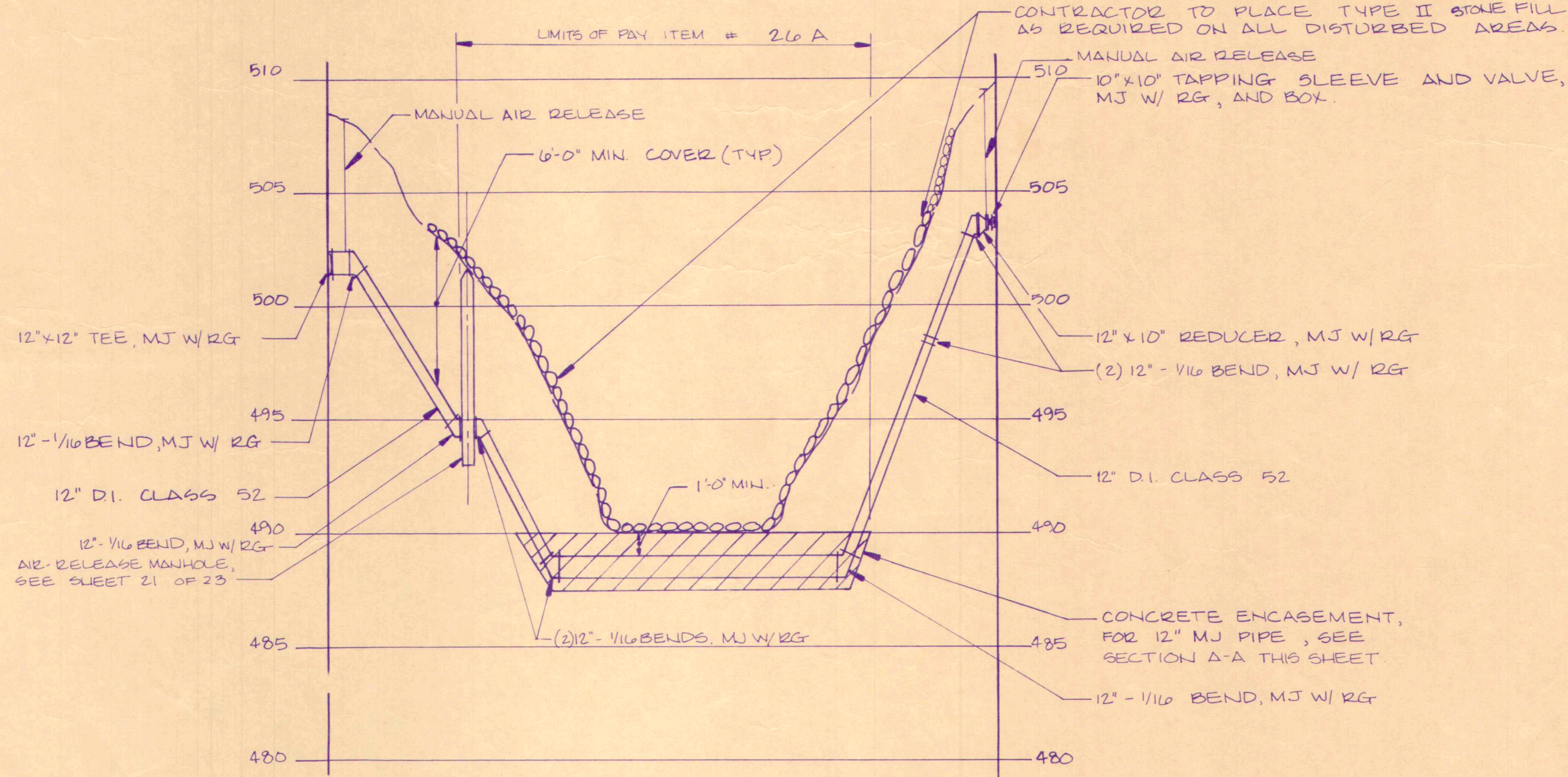
12" DI. CLASS 52

N/F STATE OF VERMONT

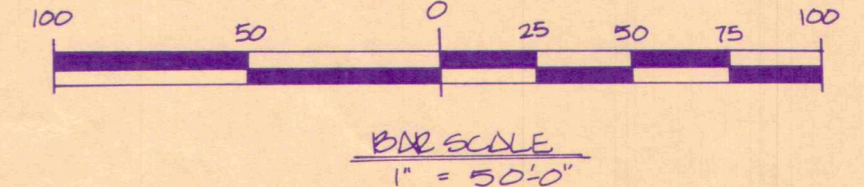
**PLAN**  
 SCALE: 1" = 20'-0"



**SECTION A-A**  
 PIPE ENCASEMENT DETAIL



**PROFILE**  
 SCALE: HORIZ 1" = 20'  
 VERT 1" = 5'



NOTE: SEE SHEET 2 OF 23  
 FOR GENERAL LEGEND

**RECORD  
 DRAWING**  
 Dufresne-Henry, Inc.

CONTRACT 92-4

VILLAGE OF WATERBURY  
 STOWE STREET  
 THATCHER BROOK CROSSING

WATERBURY, VERMONT

|          |                          |                |               |
|----------|--------------------------|----------------|---------------|
|          | Client No.               | 611019         |               |
|          | Proj. Manager            | T D NESBITT    |               |
|          | Proj. Designer           | LBL / KGF      |               |
|          | Drawn By                 | KG FLANDERS    |               |
|          | Checked By               | LB LACKEY      |               |
| Scale    | 1" = 20'-0"              | Sheet 19 of 23 |               |
| Approved | <i>Alan Drake</i>        | Date           | 27 APRIL 1992 |
| Rev.     | Description              | By             | Date          |
| 1        | BAR SCALE / RIGHT OF WAY | KGF            | 3-11-92       |

BRUNING 45337-3