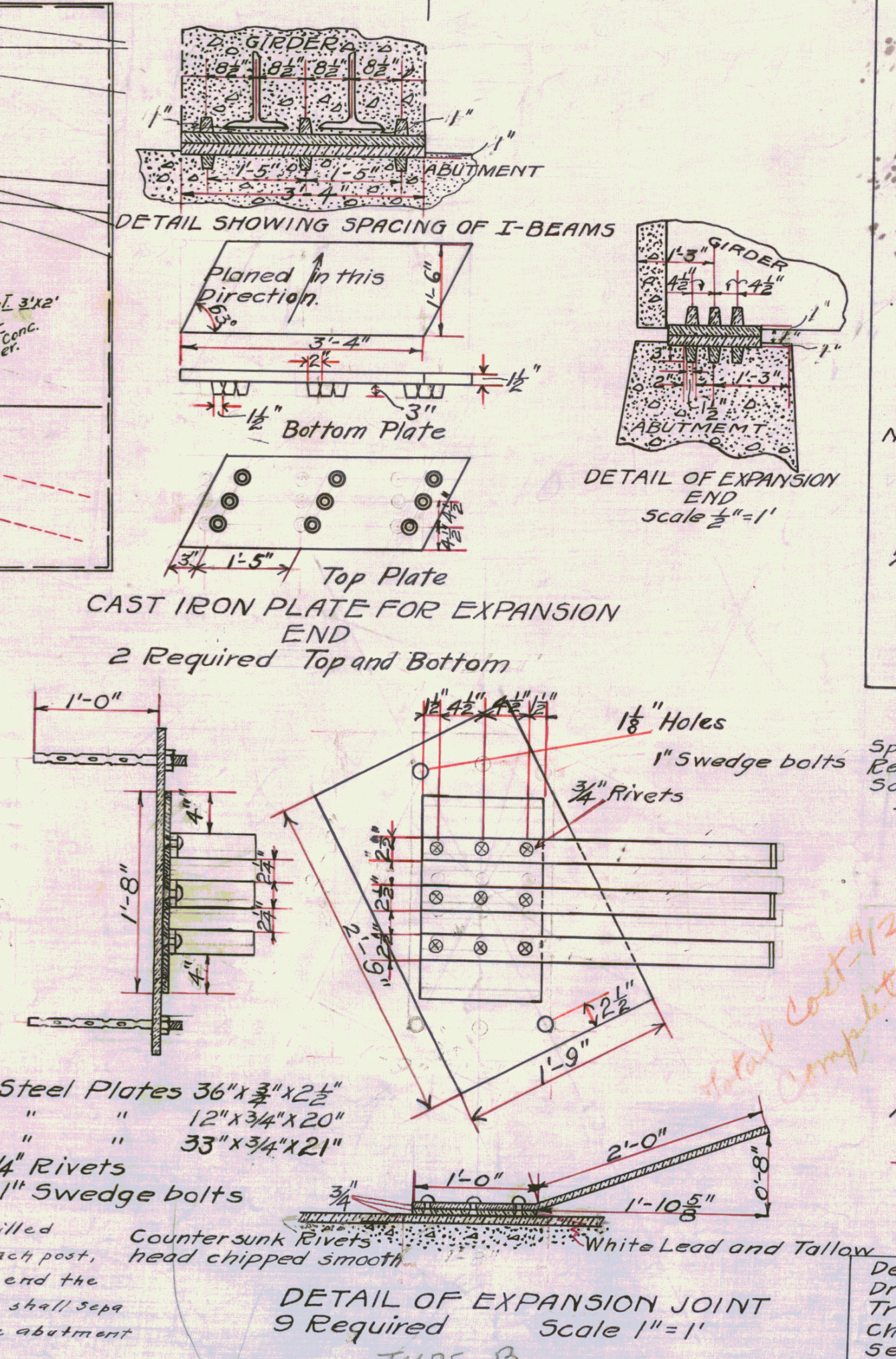


MATERIAL

Reinforcing Steel	32,825 lbs.
Structural Steel	20,448 lbs.
Gal. Pipe	50 lbs.
Cast Iron Plates	1179 lbs.
1-2-4 Concrete in Rails, Slab, Beams, Ballast Walls, Pavement and Bridge Seat	220.5 cu yds.
1-2-5 Concrete in Abutments	137.7 cu yds.
1-3-6 Concrete in Wing Walls	40.4 cu yds.
Riprap	50 Cu yds.

STEEL SCHEDULE

No. 1 Bar	38'-4 1/2"	Required 12
1/2" Square	24'-6"	Required 14
No. 2 Bar	3'-4"	Required 14
Total Length 5'-3"		
1/2" Square		Required 64
No. 3 Bar	Total Length 48'-6"	
1/4" Square	46'-5"	Required 36
No. 4 Bar	35'-5"	Required 34
1/4" Square	Total Length 50'-3"	Required 18
No. 5 Bar	26'-5"	Required 18
1/4" Square	Total Length 50'-3"	Required 18
No. 6 Bar	31'-2"	Required 68
3/4" Round	19'-9"	Required 64
No. 7 Bar	15'-0"	Required 64
3/4" Round	7'-6"	Required 72
No. 8 Bar	Total Length 11'-0"	Required 64
3/4" Round	6'-2"	Required 64
No. 9 Bar	22'-0"	Required 68
1/2" Square	Total Len. 7'-6"	Required 351
4 - 24" Beth. Girder Beams	46'-6"	



PLAN OF COOPER BRIDGE BENNINGTON, VT.

APPROVED AUG. 28, 1923

Thurman W. Dix
CHIEF ENGINEER

Designed by: J.L.D. and J.O.D.
Drawn by: F.W. GARRAN
Traced by: F.W.G. O.E.G.
Checked by: J.O.D.
Series B-331
App. No. 29 1923.

8-10-23
8-22-23
8-29-23
Filed
B-40